

Safety Action Plan

Plan de Acción de Seguridad

DUPAGE COUNTY



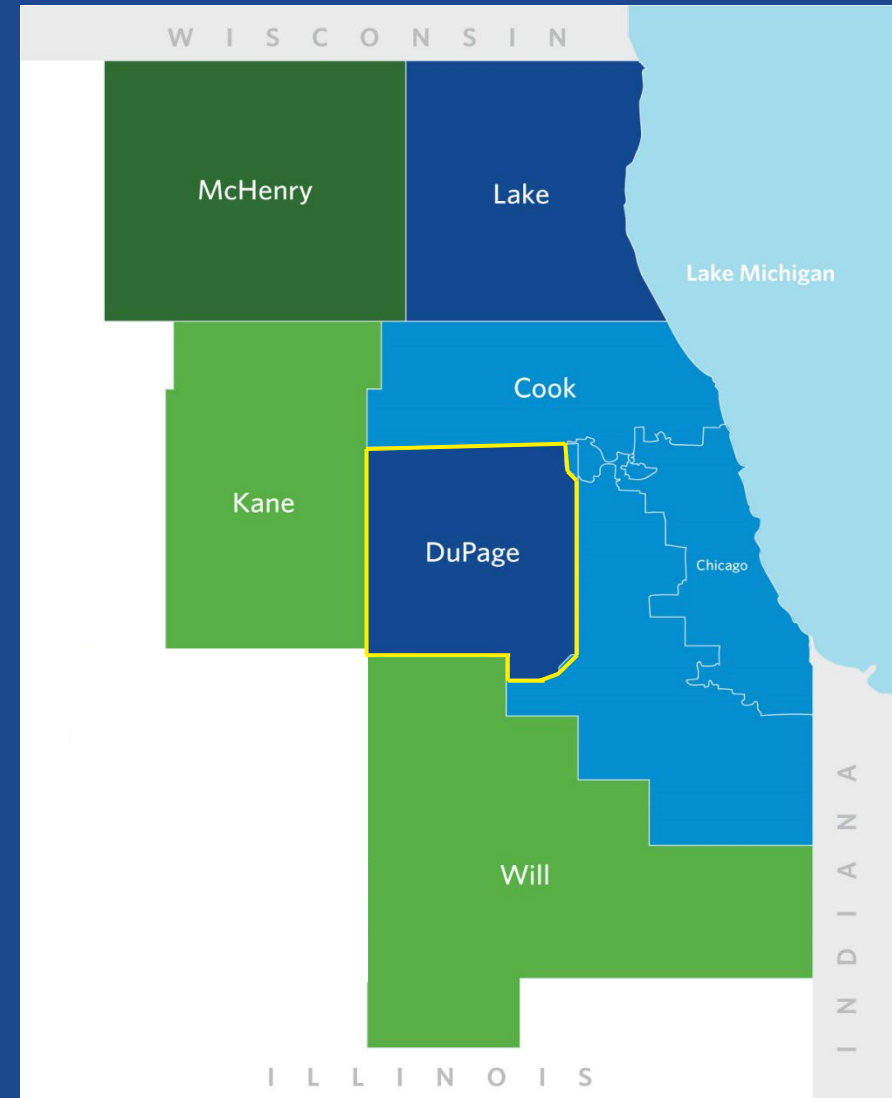
TRANSPORTATION COMMITTEE UPDATE
JANUARY 7, 2025

What is Safe Travel for All?

SS4A or STAR

A regionwide initiative to eliminate traffic fatalities and serious injuries in northeastern Illinois.

Six counties in the region – including DuPage – are developing safety action plans specific to their communities.



SAFE TRAVEL FOR ALL

What is a safety action plan?

Data-driven AND experience-based recommendations that address traffic safety issues and aim to reduce and eliminate serious injuries and deaths on DuPage County's roads.

OUTCOMES



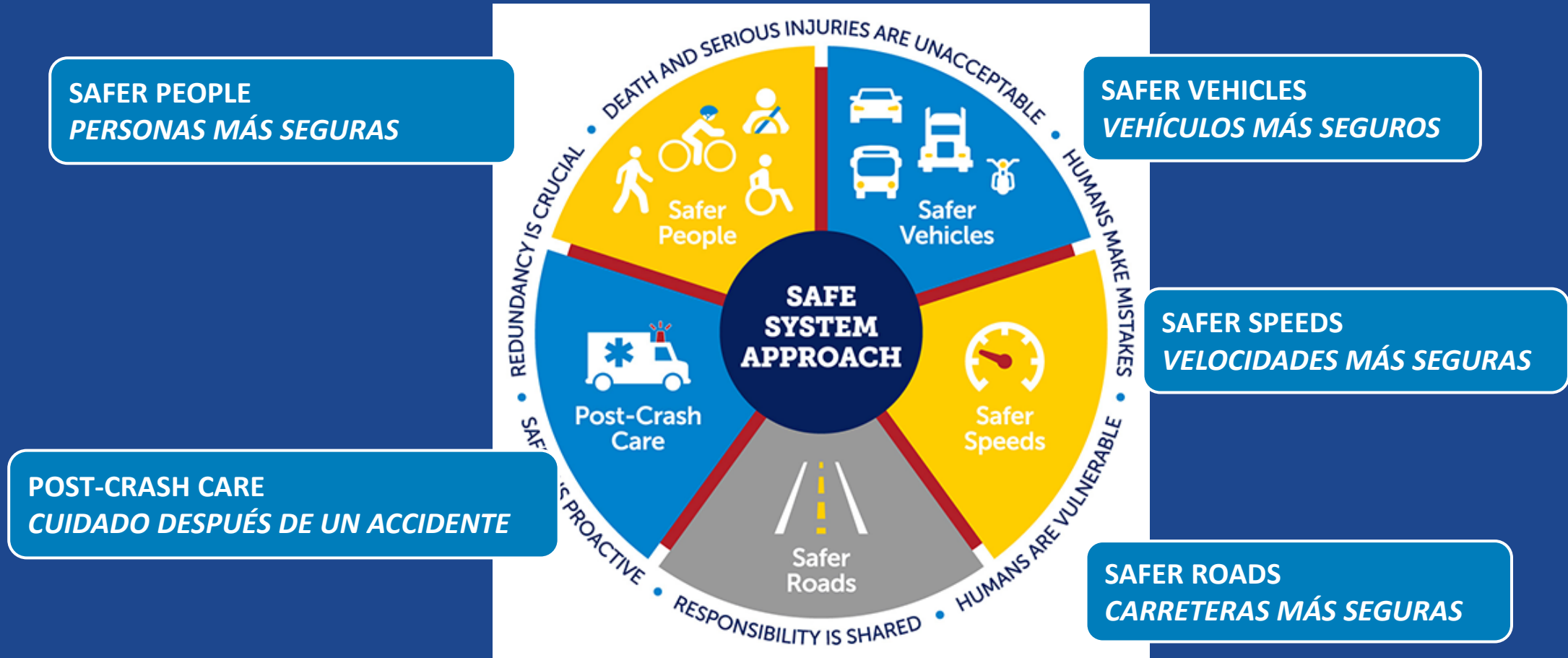
Safety strategies and tools that can be applied across DuPage County



Prioritized projects, policies, and actions that address the safety needs of disadvantaged and underserved communities

Safe Systems Approach

Enfoque de Sistema Seguro



Source: USDOT

SAFE TRAVEL FOR ALL

Timeline

Cronología



Understand
Entender

Spring – Fall 2024
Otoño – Verano 2024



Refine
Refinar

Spring 2025
Primavera 2025

We are here
Estamos aquí



Prioritize
Priorizar

Fall – Winter 2024/25
Otoño – Invierno 2024/25

SAFE TRAVEL FOR ALL

Safety trends

Tendencias de seguridad

The safety action plan focuses on the most severe crashes. *Why?*

We believe deaths and serious injuries are unacceptable and preventable.

Estimated Societal Cost of Crashes in DuPage over last five years ~ **1.57 billion**

40% of that cost is tied 2% of the crashes.

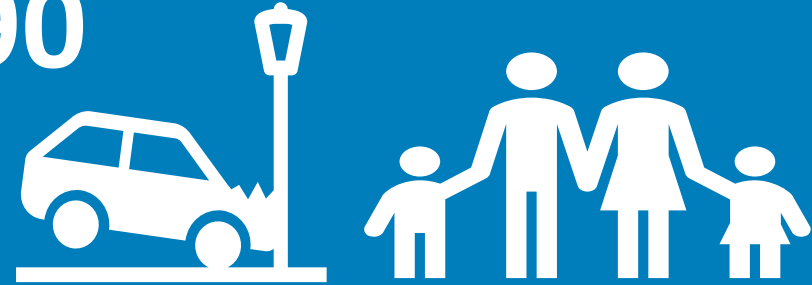
Safety trends

Tendencias de seguridad

Due to traffic crashes, more than 400 lives are irreversibly changed every year, on average.

Debido a accidentes de tráfico, más de 400 vidas cambiaron irreversiblemente cada año.

> 390



> 10



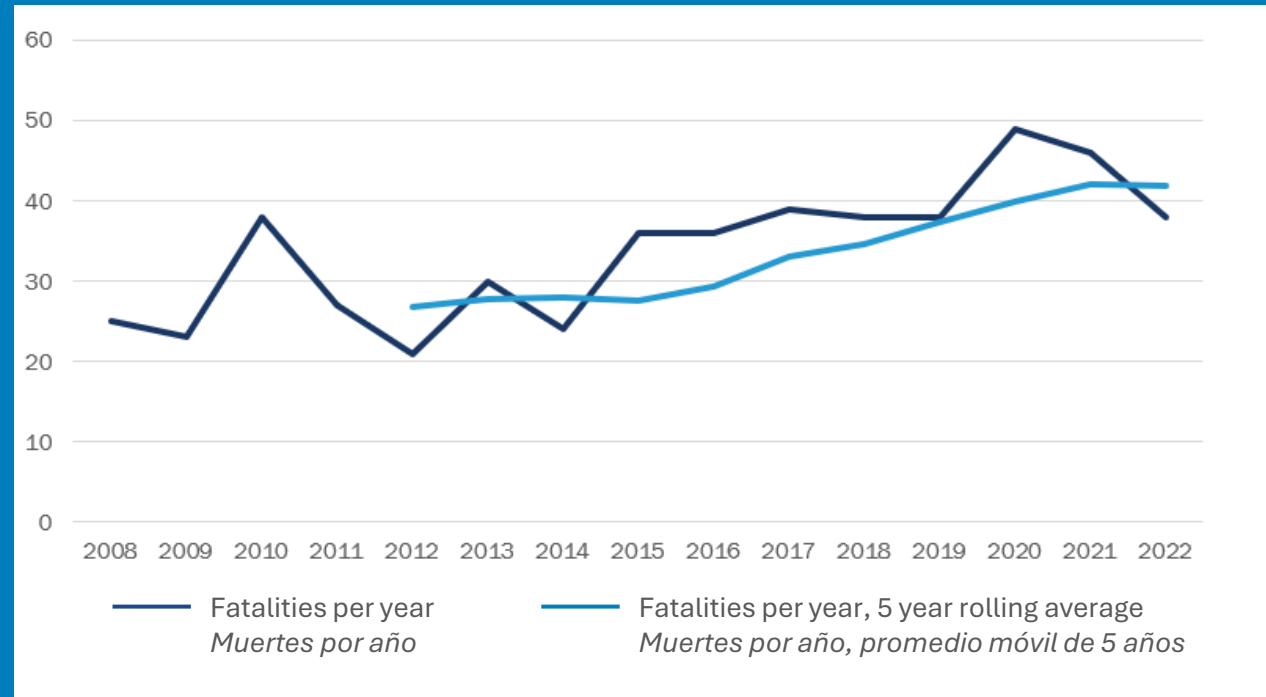
Source: IDOT, 2018-2022

SAFE TRAVEL FOR ALL

Safety trends

Tendencias de seguridad

The number of people who lost their lives in traffic crashes in DuPage County increased between 2008 and 2022.



Source: NHTSA FARS 2008 - 2022

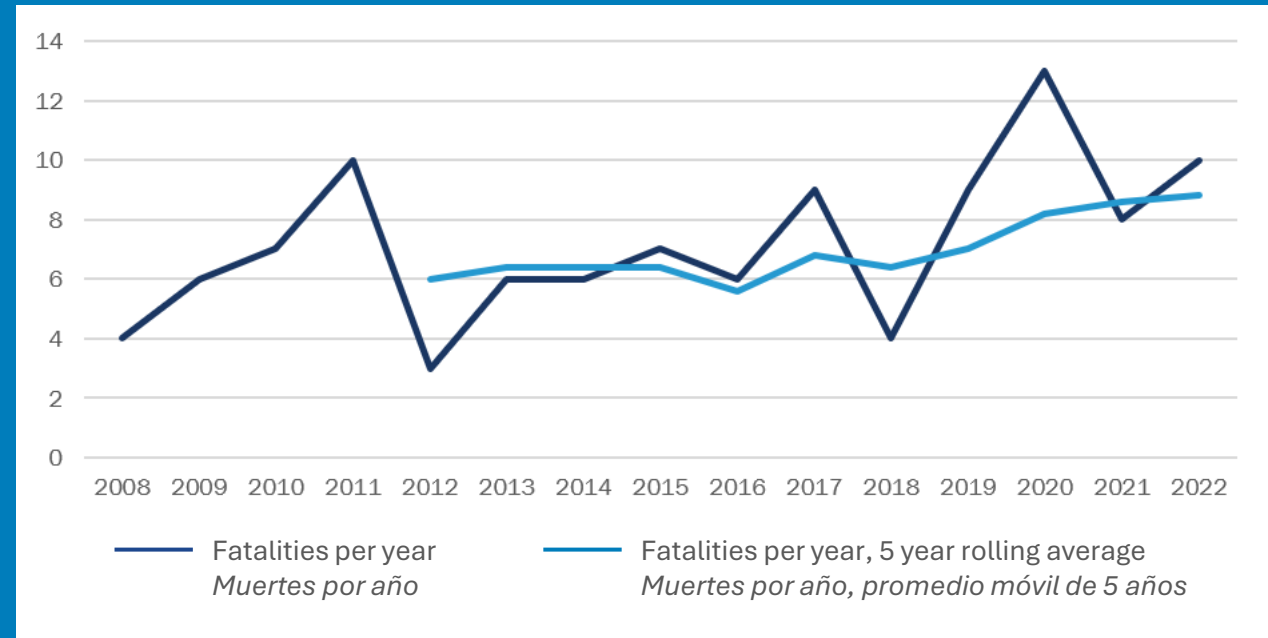
Safety trends

Tendencias de seguridad



The number of people killed while walking, biking, or using assistive devices in DuPage County **increased** over the same period.

*Las muertes de personas que caminaban, andaban en bicicleta, o utilizaban dispositivos de asistencia se **dispararon** durante ese mismo período.*



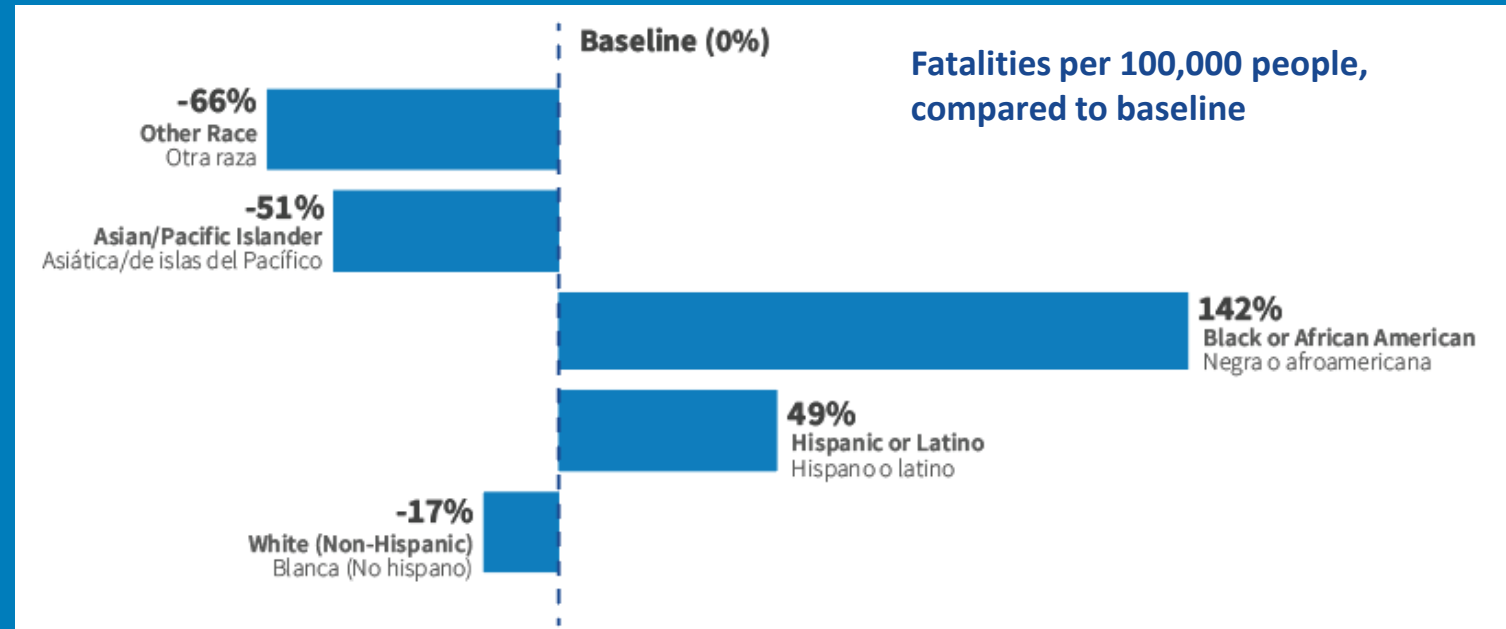
Source: NHTSA FARS 2008 - 2022

Safety trends

Tendencias de seguridad

People of color faced **disproportionately** higher numbers of traffic deaths per capita in DuPage County.

*Las personas de color enfrentaron muertes de tráfico **desproporcionadamente** altas per cápita en el condado de DuPage.*



Source: NHTSA FARS, 2017-2021

Safety trends

Tendencias de seguridad

The most severe types of crashes in DuPage County are...

Los tipos de accidentes más graves



Speeding
Exceso de velocidad



Intersections
Intersecciones



Older Drivers
Conductoras mayores



Pedestrians & Bicyclists
Peatones & ciclistas

Source: IDOT, 2018-2022

SAFE TRAVEL FOR ALL

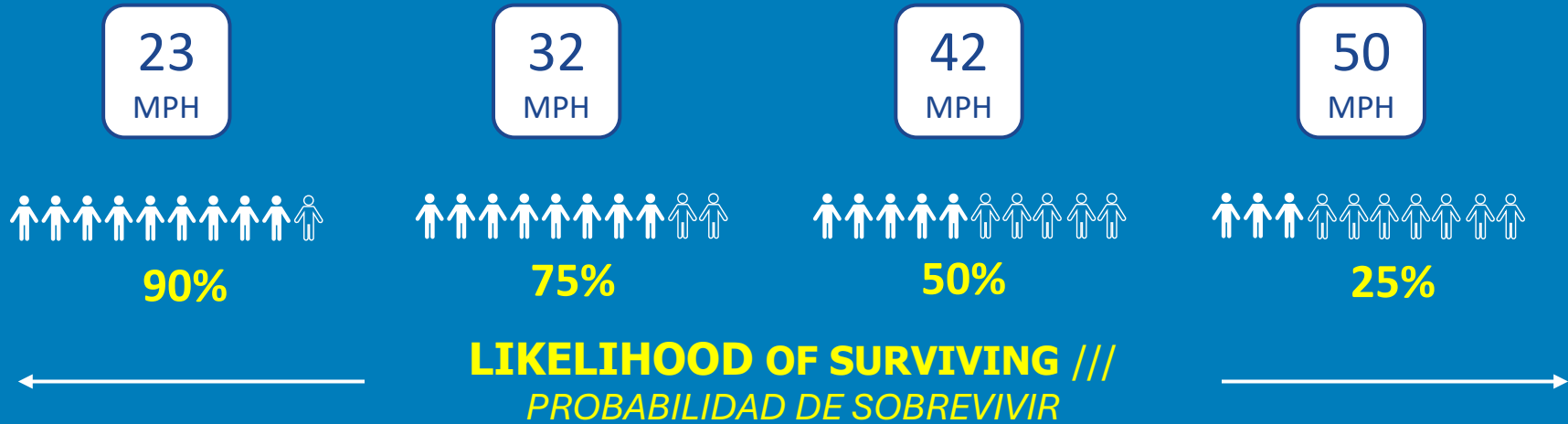


Speeding
Exceso de
velocidad

Speed matters. *La velocidad importa.*

When hit by a motor vehicle traveling at...

Quando es golpeado por un vehículo motorizado que circula a...



Source: FHWA

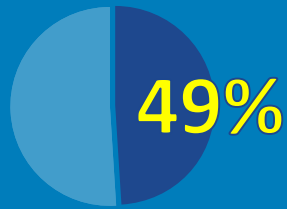
SAFE TRAVEL FOR ALL



Speeding
*Exceso de
velocidad*

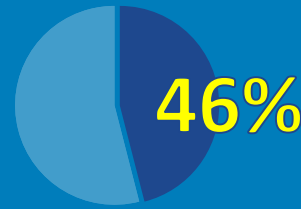
Speed matters. *La velocidad importa.*

In DuPage County **speeding** was associated with
En el condado de Dupage, el exceso de velocidad se asoció con



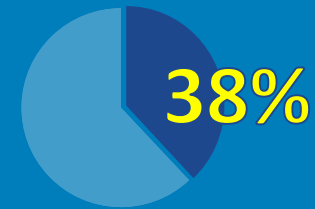
of all fatal crashes

*de todos los
accidentes mortales*



**of all fatal & serious
injury crashes**

*de todos los accidentes
mortales y con lesiones graves*



**of all fatal
pedestrian crashes**

*de todos los accidentes
mortales de peatones*

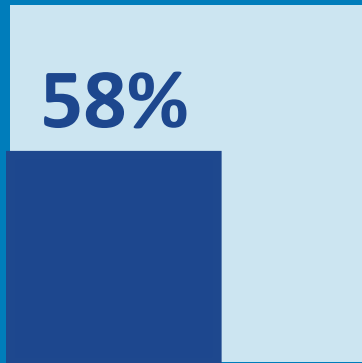
Source: FHWA

SAFE TRAVEL FOR ALL

Safety trends

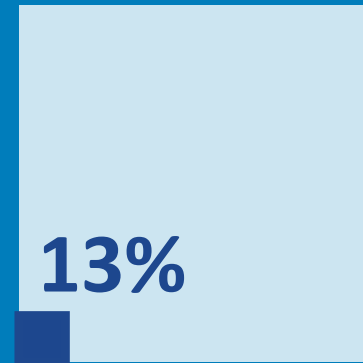
Tendencias de seguridad

The most severe crashes most commonly occur on the biggest streets
Los accidentes ocurren en las calles más grandes



58% of serious injury & fatal crashes occur on arterial streets...

58% de los accidentes con lesiones graves y muertes ocurren en las arterias



...which represent only 13% of street miles in the County.

...que representan solo el 13% de las calles por kilometraje en el condado.

Source: IDOT, 2018-2022

Safety trends

Tendencias de seguridad

Most of the primary causes of crashes (71%) included **aggressive driving** (disregarding signs, speeding, failure to yield, etc.)

*La mayoría de las causas principales de accidentes (71%) incluyeron **la conducción agresiva** (ignorar las señales, exceso de velocidad, no ceder el paso, etc.)*

IDOT, 2018 - 2022

SAFE TRAVEL FOR ALL

Engagement Activities to date:

TECHNICAL AND STAKEHOLDER GROUPS

- Internal Technical Committee
- Stakeholder Group comprised of Municipal PW and PD, Subject matter experts, community representatives

POP UPS

- 9/7 - **West Chicago Park District 10th Anniversary**
- 9/19 - DuPage Senior Dance Party
- 9/21 - Lisle French Market

OPEN HOUSES

- 9/12 - Evening Open House #1 in Elmhurst
- 11/14 - Evening Open House #2 in Bensenville



SAFE TRAVEL FOR ALL

Online engagement

PROJECT WEBSITE

- [CMAP](#)
- [DuPage County](#)

Chicago Metropolitan Agency for Planning

Home / All projects / All

Home / Safe Travel for All / DuPage County Safety Action Plan / Safety Hotspots Map // Mapa de Puntos Críticos de Seguridad

Safety Hotspots Map // Mapa de Puntos Críticos de Seguridad

Instructions // Instrucciones

We want to understand which streets and roads you feel are the most dangerous in your everyday life. Are there certain intersections, roads, or streets that you don't feel safe using? Are there places you avoid or can't get to because of a dangerous route? Please drag a pin on the map and describe in detail what makes it dangerous (e.g. how it is incomplete, missing, poorly maintained, or unsafe). Feel free to upload a photo. Please note your comments and photos will be publicly available.

Queremos comprender qué calles y caminos sienten que son los más peligrosos en su vida diaria. ¿Hay ciertas intersecciones, caminos o calles en las cuales no se sienta seguro para transitar? ¿Hay lugares que evita o no pueda llegar debido a una ruta peligrosa? Por favor, arrastre un pin en el mapa y describa en detalle qué lo hace peligroso (por ejemplo, cómo está incompleto, faltante, mal mantenido o inseguro). Si quieres, también puedes subir una foto. Por favor, tenga en cuenta que sus comentarios y fotografías estarán disponibles públicamente.

engage.cmap.illinois.gov/dupage

SAFE TRAVEL FOR ALL

Next steps

- Existing Conditions Report (January, 2025)
- Draft safety countermeasures (January, 2025)
- Draft project list (March, 2025)
- Draft strategies and safety tools (March, 2025)
- Demonstration project(s) (April/May, 2025)
- Draft Safety Action Plan (June, 2025)
- Final Safety Action Plan (July/Aug, 2025)

How you can help us

- Help market and publicize with your constituents
- Promote website and public comment map
- Contribute ideas for public outreach opportunities and venues
- Identify locations where your constituents have complained about safety

Project website:



engage.cmap.illinois.gov/dupage

SAFE TRAVEL FOR ALL