



# Sidewalk Program Proposal 2026

Presented to: Michael Figuray  
DuPage County Division of Transportation  
DuPage County Sidewalk Program  
March 05, 2026

Philip Sitton • Project Manager • 331.444.4822 • [Philip@NoTrippin.com](mailto:Philip@NoTrippin.com) • [www.notrippin.com](http://www.notrippin.com)

*Information contained in this proposal is proprietary and confidential, and is to be used solely by DuPage County Division of Transportation personnel in evaluating the project. Copying, unauthorized disclosure, reuse in any form is prohibited.*

# Introduction

---

March 05, 2026

Michael Figuray  
DuPage County Division of Transportation  
140 N County Farm Rd  
Wheaton, Illinois 60187

Michael,

Thank you for the opportunity to present this proposal for sidewalk evaluation and trip hazard repair.

## Review

1. The DuPage County Division of Transportation has requested Safe Step LLC evaluate sidewalk segments, identified by the DuPage County Division of Transportation, in priority order until the \$100,000.00 repair budget has been reached.
  1. Upon reaching the total repair budget of \$100,000.00, the evaluation will stop. If all of the priority areas are able to be included prior to reaching the budget, DuPage County Division of Transportation may provide additional sidewalk segments for evaluation.
  2. The DuPage County Division of Transportation program inch foot rate for all services rendered in 2025 is \$45.53. There are no other fees for this program.
2. Safe Step LLC will evaluate sidewalks for defects that present a trip hazard and are appropriate for saw-cutting repair based on the identification criteria on page 4.
3. Safe Step LLC will also evaluate sidewalks for defects that are not appropriate for saw-cutting repair and will require alternative repair methods.
4. Safe Step LLC is the regional affiliate of Precision Concrete Cutting based out of Provo, Utah.
5. Precision Concrete Cutting has been awarded lowest bidder for saw-cutting repair through the TIPS Purchasing Cooperative Ref. TIPS RCSP 230104.

## Notable Proposal Contents

- Page 2: Execution Strategy
- Page 3-5: Priority Areas Map
- Page 6: Evaluation Criteria
- Page 9: Proposal Acceptance

Please let me know if you have any questions. We look forward to serving your needs.

**Philip Sitton • Project Manager • 331.444.4822 • Philip@NoTrippin.com • [www.notrippin.com](http://www.notrippin.com)**

*Information contained in this proposal is proprietary and confidential, and is to be used solely by DuPage County Division of Transportation personnel in evaluating the project. Copying, unauthorized disclosure, reuse in any form is prohibited.*

# Execution Strategy

---

Based on our discussions, Safe Step will execute the project as follows:

1. Confirm sidewalk evaluation area and defect identification criteria (enclosed)

1. Page 3-5 of this proposal contains the sidewalk areas and the priority in which they should be evaluated and repaired.
2. Page 6 of this proposal contains the defect identification criteria that will be used to evaluate the sidewalks.

2. Evaluate current sidewalk conditions

1. Safe Step LLC will evaluate the sidewalk locations in the priority order until the budget is met.
2. Identified defects will be recorded along with the measurement, address, approximate GPS coordinates, important notes, and a photo of the defect.

3. Deliver evaluation results

1. Following the completion of the evaluation, Safe Step LLC will provide the sidewalk defect data through a proprietary online tool called *Sidewalk Central™*. This data includes locations, descriptions, suggested repair types, and photos of each defect identified.
2. *Sidewalk Central™* allows you to review, make notes, and confirm the preferred repair type for each defect.

4. Perform repairs

1. After you review and confirm the repair locations, we will schedule a timeframe to begin repairing the identified saw-cutting locations.
2. All saw-cutting repairs will be done in accordance with "The Safe Step LLC Approach" outlined on page 7 of this proposal.
3. *Sidewalk Central™* allows you to monitor the saw-cutting in real-time, providing defect completion status as well as repair photos and timestamps for quality assurance.

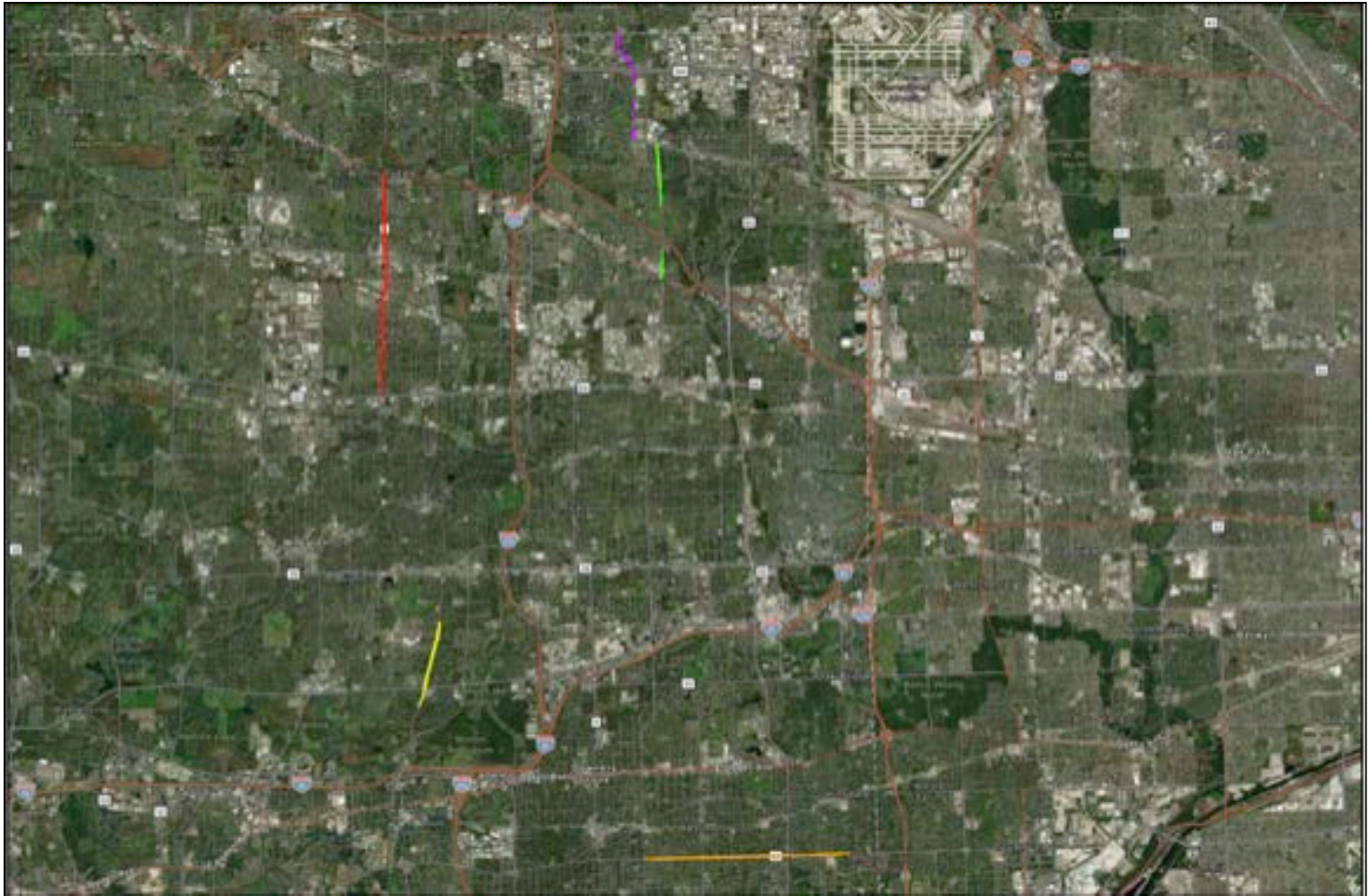
5. Provide documentation

1. At the conclusion of the project, we will provide a final report of saw-cut locations repaired including the displacement measurements, address, approximate GPS coordinates, GIS shapefiles and important notes.

**Philip Sitton • Project Manager • 331.444.4822 • Philip@NoTrippin.com • [www.notrippin.com](http://www.notrippin.com)**

*Information contained in this proposal is proprietary and confidential, and is to be used solely by DuPage County Division of Transportation personnel in evaluating the project. Copying, unauthorized disclosure, reuse in any form is prohibited.*

# Priority Areas Map



Map Data: Google

## Survey Area

1. Bloomingdale Rd–North Ave to Lake St (6.2 Miles)
2. Park - Countyline south to 53 (2.41 Miles)
3. Addison Rd - Lake St to Irving Pk (2.18 Miles)
4. Prospect Ave - Irving Pk to Devon Ave (1.49 Miles)
5. 55th - Fairview East to Countyline (5.40 Miles)

**Total Miles: 17.68**

**Philip Sitton • Project Manager • 331.444.4822 • Philip@NoTrippin.com • [www.notrippin.com](http://www.notrippin.com)**

*Information contained in this proposal is proprietary and confidential, and is to be used solely by DuPage County Division of Transportation personnel in evaluating the project. Copying, unauthorized disclosure, reuse in any form is prohibited.*

# Sidewalk Evaluation Criteria

Condition		Record for Saw-Cutting	Record for Replacement
Panel Offset: Min (1/8s) <b>4</b> Max (1/8s) <b>16</b>		<b>Y</b>	If greater <b>Y</b>
Sharp edge: Height (1/8s) <b>4</b>		<b>Y</b>	<b>N/A</b>
Prior Grind/Saw-Cut Repairs <sup>1</sup> :		<b>N</b>	<b>N</b>
Cutting to sunken panel:		<b>LIFT</b>	<b>LIFT</b>
Waterpooling:		<b>LIFT</b>	<b>LIFT</b>
Caused by tree:		<b>Y</b>	<b>Y</b>
Negative cross-slope:		<b>Y</b>	<b>Y</b>
Positive cross-slope:		<b>Y</b>	<b>Y</b>
Contains structural crack <sup>2</sup> : Qty no more than <b>2</b> Gap no more than <b>1"</b>		<b>Y</b>	<b>Y</b>
Displacement is a crack <sup>2</sup> : Perpendicular <b>Y</b> Parallel <b>Y</b>		<b>Y</b>	<b>Y</b>
Panel is spalled <sup>2</sup> : Surface less than <b>50</b> Depth no more than <b>1/2"</b>		<b>Y</b>	<b>Y</b>
Sidewalk joint is decayed <sup>2</sup> : Width no more than <b>2"</b>		<b>Y</b>	<b>Y</b>
Curbing:		<b>N</b>	<b>N</b>
On bridge structure:		<b>Y</b>	<b>CR</b>
Parallel joints: Min. Height <b>4</b> Max Height <b>16</b>		<b>Y</b>	<b>Y</b>
Ramps: At Landing Max Ht At street Max Ht		<b>N</b>	<b>N</b>
Top of flowline:		<b>N</b>	<b>N</b>
Adjacent to asphalt:		<b>N</b>	<b>N</b>
Adjacent to pavers:		<b>N</b>	<b>N</b>
Saw-cut on monolithic driveways		<b>Y</b>	<b>CR</b>

Marking/Other	
Mark Saw-Cutting	<b>YES</b>

Mark R&R	<b>NO</b>
5" R&R Sq. Ft. Cost	<b>\$17.00</b>
6" R&R Sq. Ft. Cost	<b>\$19.00</b>

Use Lifting for sunken & waterpooling panels	<b>YES</b>
Mark Lifting	<b>NO</b>
Lifting Sq. Ft. Price	

Scatter Sites	
Apply criteria to scatter sites?	<b>Y</b>
Survey only marked?	
Survey entire address?	
Survey entire block-face?	<b>Y</b>

Notes: DuPage County 2026

- Do not evaluate ramps
- Inspectors and Technicians, text Dominic Novak DAILY to check in while onsite at 630.878.1000.
- Inspectors, while surveying, use street names per area as defined by DuPage County to ensure easier SWC searching by street name
- Technicians, make sure "After" photos match the direction of "Before" photos to ensure easier quality assurance auditing

<sup>1</sup>As measured at presenting face; recorded values will be for proper 12:1 repair

<sup>2</sup>Panels failing this criteria will be recorded for replacement regardless of offset

Philip Sitton • Project Manager • 331.444.4822 • Philip@NoTrippin.com • [www.notrippin.com](http://www.notrippin.com)

Information contained in this proposal is proprietary and confidential, and is to be used solely by DuPage County Division of Transportation personnel in evaluating the project. Copying, unauthorized disclosure, reuse in any form is prohibited.

# The Safe Step Approach

---



## Specifications

1. Repairs will be tapered to a 1:12 slope ratio and taken to a zero point of differential between adjoining sidewalk panels along the full width of the sidewalk, in accordance with ADA standards.
2. Repairs shall have a smooth and uniform finish with a coefficient of friction meeting OSHA requirements and shall not impact adjoining sidewalks, driveways, landscaping, or other objects within the vicinity of the work.
3. In instances where sidewalk conditions do not permit a 1:12 slope ratio, repairs will be made with the shallowest slope possible for the given sidewalk condition.



## Clean-up

1. All saw-cutting will be performed without water-cooling; No slurry will be created eliminating the risk of “tracking” and run-off water contamination.
2. Saw mounted dust abatement systems will be used to minimize airborne dust. Containment systems are designed for fine dust applications.
3. Debris and concrete shall be cleaned from the sidewalk surface as well as surrounding rails, sidewalks, driveways, landscaping, or other objects within the vicinity of the work.



## Reporting

1. Upon completion of the project, Safe Step LLC will provide a detailed and audit-able report. This report will include the street address or location, dimensions, and GPS coordinates of each repair made.
2. An invoice for payment will be provided when the projected has been completed. Payment in full is due **60 days** from the date of invoice.



## Safety and Insurance

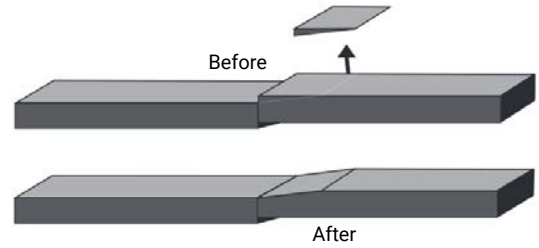
1. Safe Step LLC employees who work directly in slab displacement repair undergo a rigorous training process with emphasis on safe work practices, OSHA-approved personal protection equipment, and quality workmanship. It is not uncommon for our clients to receive unsolicited compliments on our safety practices and the quality of the work performed.
2. Safe Step LLC is fully licensed and insured. Proof of auto, liability, and workers compensation insurance are available upon request.

**Philip Sitton • Project Manager • 331.444.4822 • Philip@NoTrippin.com • [www.notrippin.com](http://www.notrippin.com)**

*Information contained in this proposal is proprietary and confidential, and is to be used solely by DuPage County Division of Transportation personnel in evaluating the project. Copying, unauthorized disclosure, reuse in any form is prohibited.*

# Our Result

---



Before



After



Philip Sitton • Project Manager • 331.444.4822 • Philip@NoTrippin.com • [www.notrippin.com](http://www.notrippin.com)

*Information contained in this proposal is proprietary and confidential, and is to be used solely by DuPage County Division of Transportation personnel in evaluating the project. Copying, unauthorized disclosure, reuse in any form is prohibited.*

# Proposal Acceptance

## Financial Parameters

### 1. Financial Parameters

1. The total cost of the reporting and saw-cutting repairs will not exceed **\$100,000.00**.
  1. There is no additional fee for the evaluation.
2. Safe Step LLC will accept full responsibility for any project cost overage, provided that the scope of the project is not altered once the project begins. Any requested change in scope will be fully discussed and approved by the DuPage County Division of Transportation prior to the start of the work on the revised area.

If this proposal is acceptable, please complete and sign below. We will contact you upon receiving this form to schedule your project.

**Cost: \$100,000.00**

**Proposal #: 202543**

Due to the ongoing supply chain issues and labor availability, the pricing in this proposal is only valid until **May 31, 2026**.

Billing Contact Name:

Billing Email Address:

PO Number:  Does this project require prevailing wage?:

Approved by:  Date:

Signed:  SIGNATURE  
Michael Figuray Title:

### Client Notes:

**Philip Sitton • Project Manager • 331.444.4822 • Philip@NoTrippin.com • [www.notrippin.com](http://www.notrippin.com)**

*Information contained in this proposal is proprietary and confidential, and is to be used solely by DuPage County Division of Transportation personnel in evaluating the project. Copying, unauthorized disclosure, reuse in any form is prohibited.*