

# HIDDEN LAKES EQUIPMENT SHED REPLACEMENT

**DuPage County**

**Wheaton, Illinois**

**99% DESIGN DEVELOPMENT**



## CIVIL

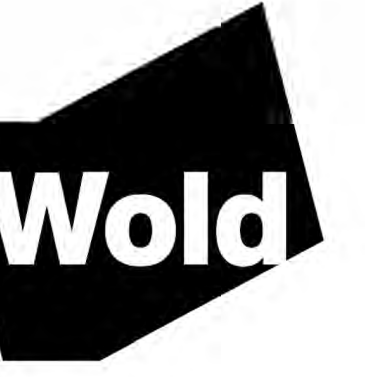
C0.000 SURVEY

## ARCHITECTURAL

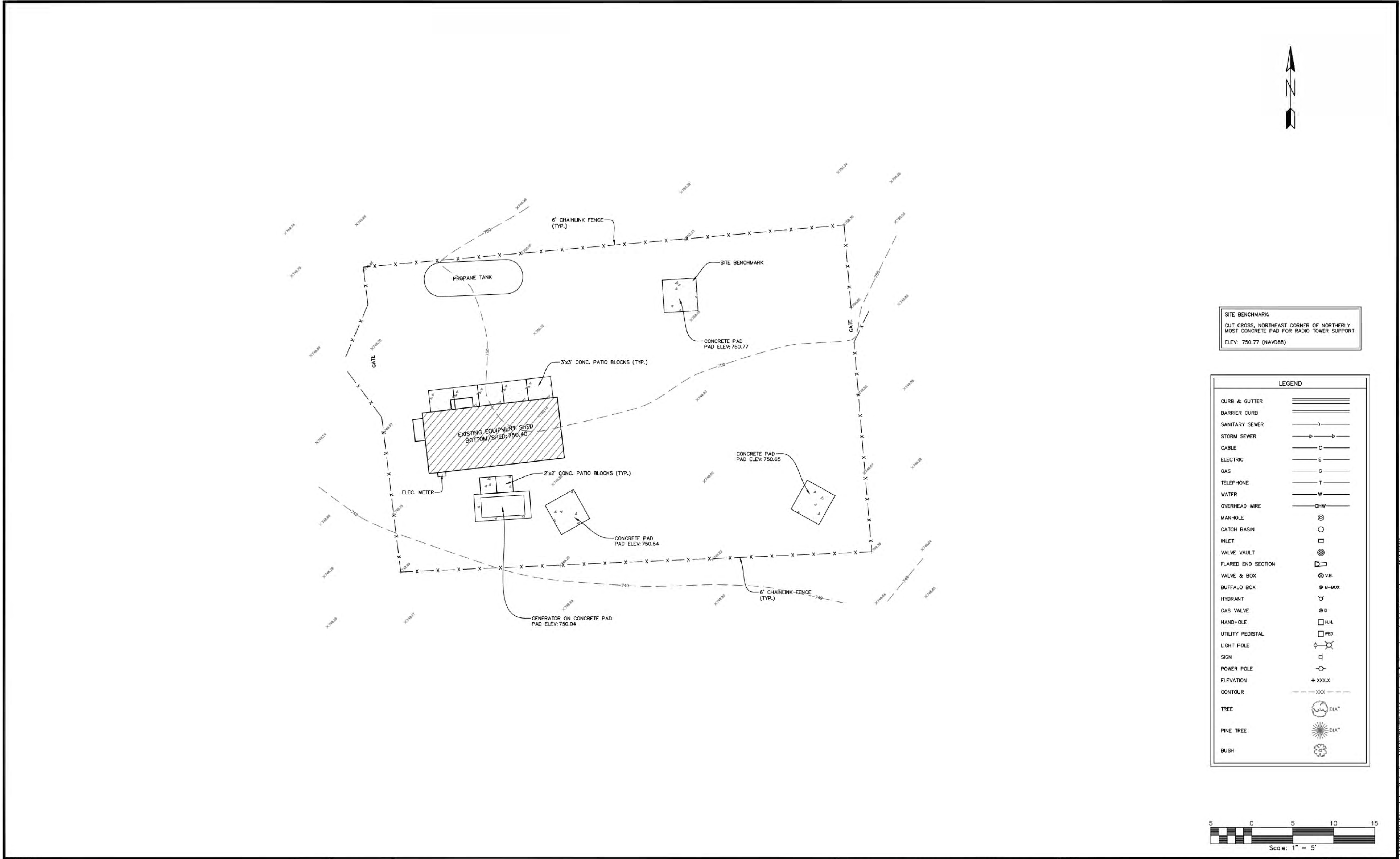
A1.101 EQUIPMENT SHED DEMOLITION AND NEW WORK PLAN

## ELECTRICAL

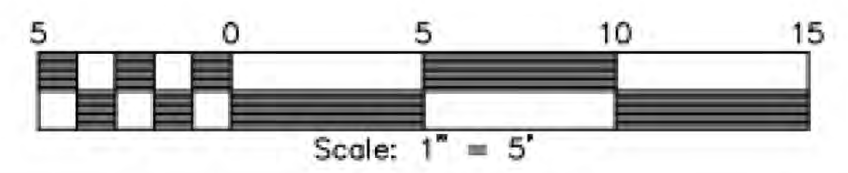
E0.001 GENERAL ELECTRICAL SYMBOLS  
E0.002 GENERAL ELECTRICAL NOTES  
E0.003 GENERAL ELECTRICAL DETAILS  
E1.101 EQUIPMENT SHED POWER PLANS  
E2.101 ONE-LINE DIAGRAM AND DETAILS



IL



**SITE BENCHMARK:**  
CUT CROSS, NORTHEAST CORNER OF NORTHERLY  
MOST CONCRETE PAD FOR RADIO TOWER SUPPORT.  
ELEV: 750.77 (NAVD88)



REVISIONS:			DATE	BY	DESCRIPTION

<b>DRAWN BY:</b> A.J.	<b>ENGINEERING RESOURCE ASSOCIATES</b>
<b>CHECKED BY:</b> M.M.	35701 WEST AVENUE, SUITE 150 WARRENVILLE, ILLINOIS 60555 PHONE (630) 393-3060 FAX (630) 393-2152
<b>APPROVED BY:</b> M.M.	10 S. RIVERSIDE PLAZA, SUITE 875 CHICAGO, ILLINOIS 60606 PHONE (312) 474-7841 FAX (312) 474-6099

**ENGINEERING RESOURCE ASSOCIATES**

35701 WEST AVENUE, SUITE 150  
WARRENVILLE, ILLINOIS 60555  
PHONE (630) 393-3060  
FAX (630) 393-2152

10 S. RIVERSIDE PLAZA, SUITE 875  
CHICAGO, ILLINOIS 60606  
PHONE (312) 474-7841  
FAX (312) 474-6099

2416 GALEN DRIVE  
CHAMPAIGN, ILLINOIS 61821  
PHONE (217) 351-6268  
FAX (217) 355-1902

**WOLD ARCHITECTS AND ENGINEERS**  
220 NORTH SMITH STREET, SUITE 310  
PALATINE, ILLINOIS 60067

**DUPAGE COUNTY  
HIDDEN LAKES RADIO TOWER  
EXISTING CONDITIONS PLAN**

**SCALE:** 1"=5'  
**DATE:** NOVEMBER, 2023  
**JOB NO:** W23282  
**SHEET** 1 of 1

I hereby certify that this plan, specification or report was prepared by me or under my direct supervision and that I am a duly Licensed ARCHITECT under the laws of the State of ILLINOIS

**MATT BICKEL**  
License Number: Arch Num Date 12/2023

Description	Revisions	
	Date	Num

Comm: 223018  
Date: 12/2023  
Drawn: Author  
Check: Checker

**SURVEY**

Scale: 1" = 20'-0"  
**C0.000**

A

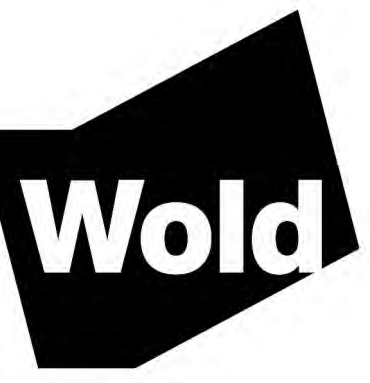


**HIDDEN LAKES  
EQUIPMENT SHED  
REPLACEMENT**

Downers Grove, Illinois 60515

99% DESIGN DEVELOPMENT

**DuPage County**  
421 N County Farm Road  
Wheaton, Illinois



**WOLD ARCHITECTS  
AND ENGINEERS**  
220 North Smith Street, Suite 310  
Palatine, Illinois 60067

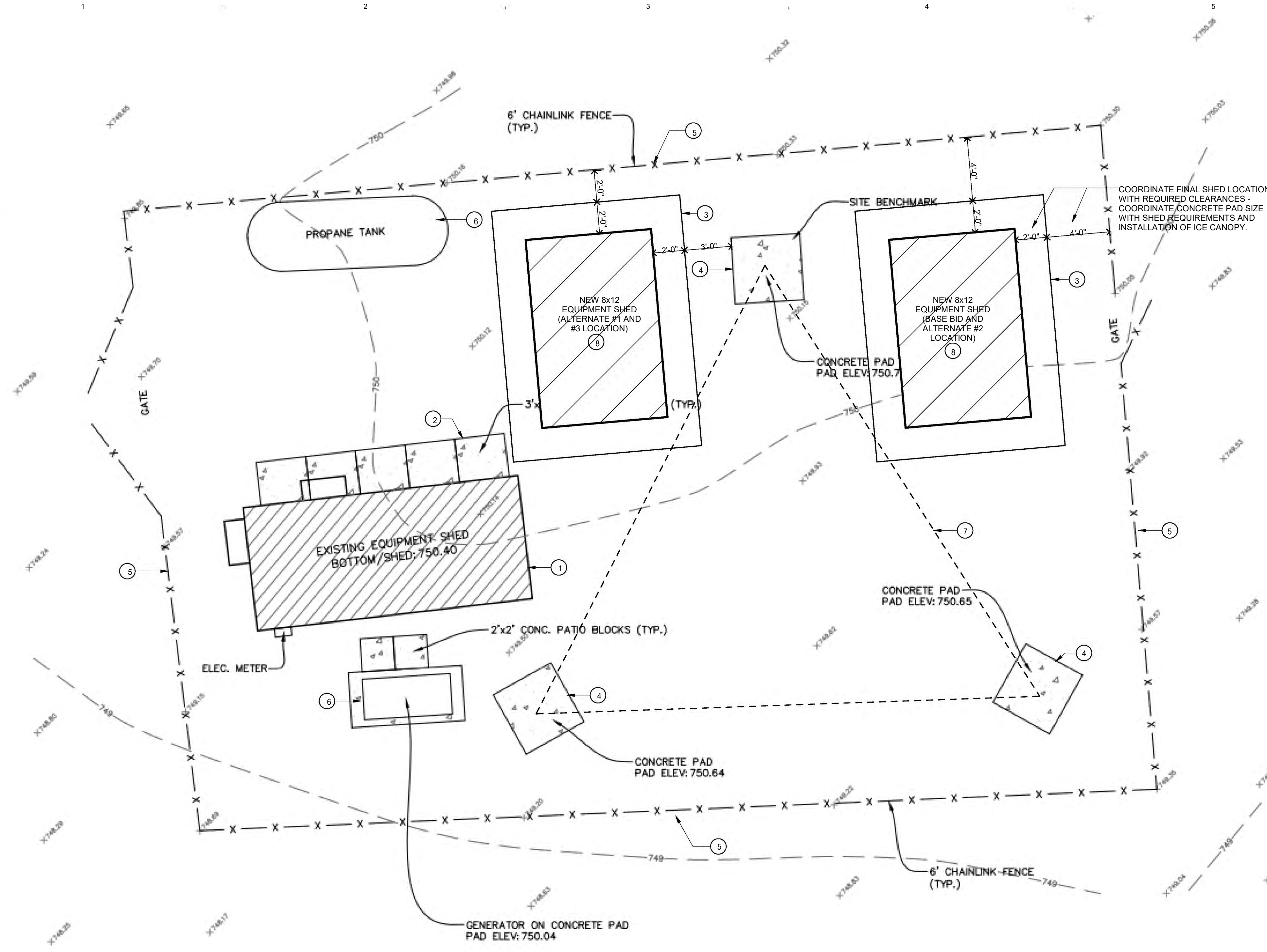
woldae.com | 847 241 6100

**PLAN GENERAL NOTES**

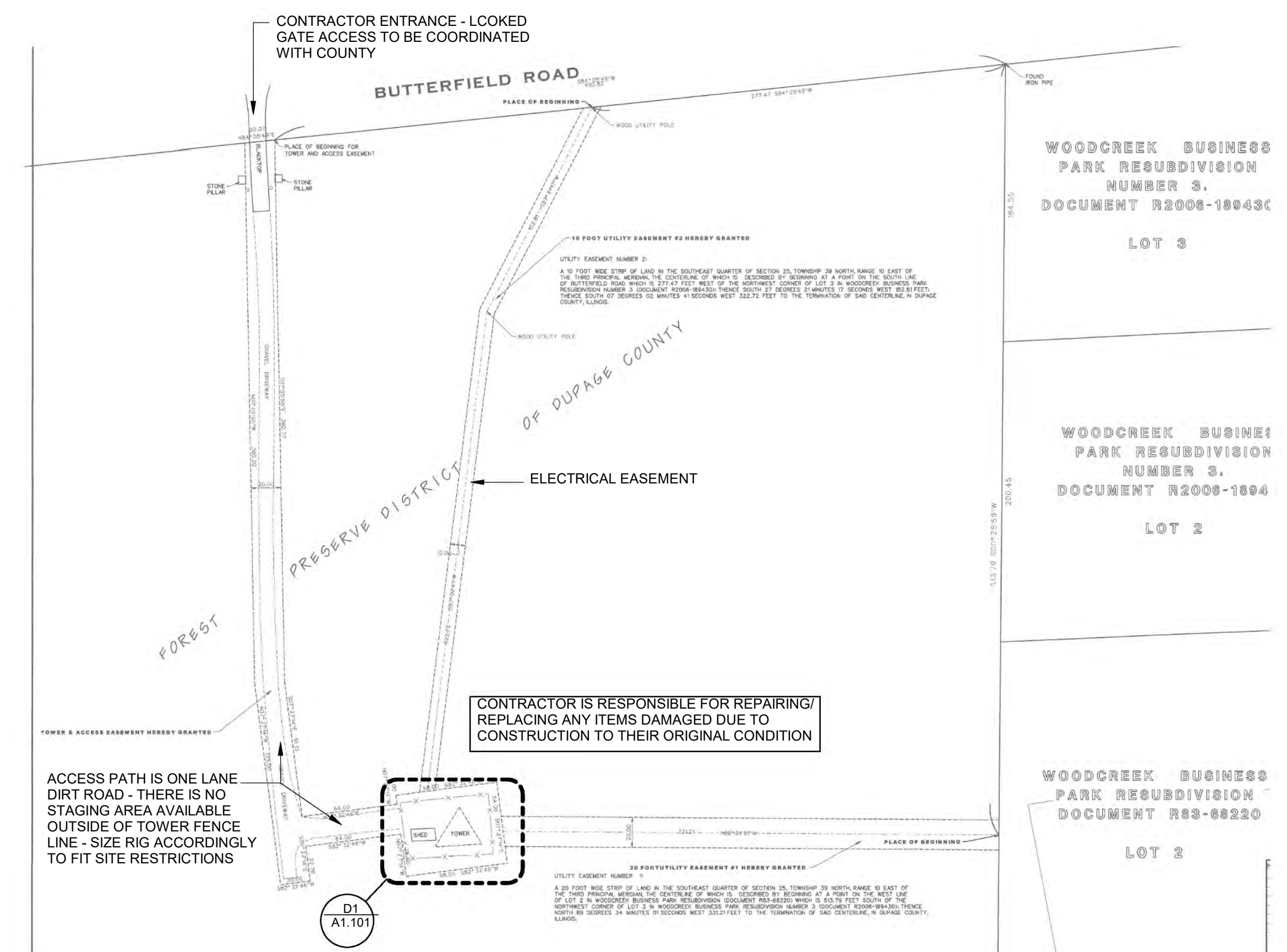
- CONSTRUCTION ACCESS TO AND FROM THE PROJECT SITE SHALL BE LIMITED TO ONE CONNECTION AS DIRECTED BY THE COUNTY.
- THE CONTRACTOR SHALL FIELD CHECK AND VERIFY ALL DIMENSIONS AND ELEVATIONS PRIOR TO THE START OF CONSTRUCTION.
- EXISTING UNDERGROUND UTILITIES SHOWN ON THE PLANS ARE APPROXIMATE ONLY. THE CONTRACTOR SHALL DETERMINE EXACT LOCATION AND ELEVATION FROM THE OWNERS OF THE UTILITIES. CONTRACTOR TO LOCATE ALL PRIVATE AND PUBLIC UTILITIES PRIOR TO BEGINNING ANY WORK.
- ANY DAMAGE CAUSED BY THE CONTRACTOR TO ADJACENT PROPERTY AND STRUCTURES SHALL BE REPAIRED OR REPLACED AT THEIR EXPENSE AND TO THE SATISFACTION OF THE OWNER.
- THE LOCATIONS AND EXTENTS OF AREAS USED FOR CONSTRUCTION STAGING PURPOSES AS EQUIPMENT PARKING AND MATERIAL STORAGE AREAS ARE SUBJECT TO APPROVAL OF THE COUNTY.
- ALL DISTURBED AREAS TO BE REPLACED TO MATCH ORIGINAL GRADES.
- EXISTING SHELTER TO REMAIN IN PLACE AND FUNCTIONAL UNTIL NEW SHELTER IS INSTALLED AND READY FOR SWITCHOVER AND TO BE BROUGHT ONLINE. CONTRACTOR MUST PROVIDE THE COUNTY 72 HOURS NOTICE PRIOR TO SHUT DOWN OF THE EXISTING SHELTER.
- CONTRACTOR TO PROVIDE CERTIFICATES OF INSURANCE TO THE DUPAGE COUNTY FOREST PRESERVE FOR ANY/ALL CONTRACTORS WORKING ON THE SITE.
- REFURBISHED CONCRETE SHELTER TO MEET TECHNICAL/SYSTEMS REQUIREMENTS OF BASE BID FIBERGLASS SHELTER AND TO BE PROCURED THROUGH TOWER WORKS (630) 557-2221 FOR ALTERNATES #2 AND #3.
- NOT USED.

**PLAN DEMOLITION AND NEW WORK KEY NOTES:**

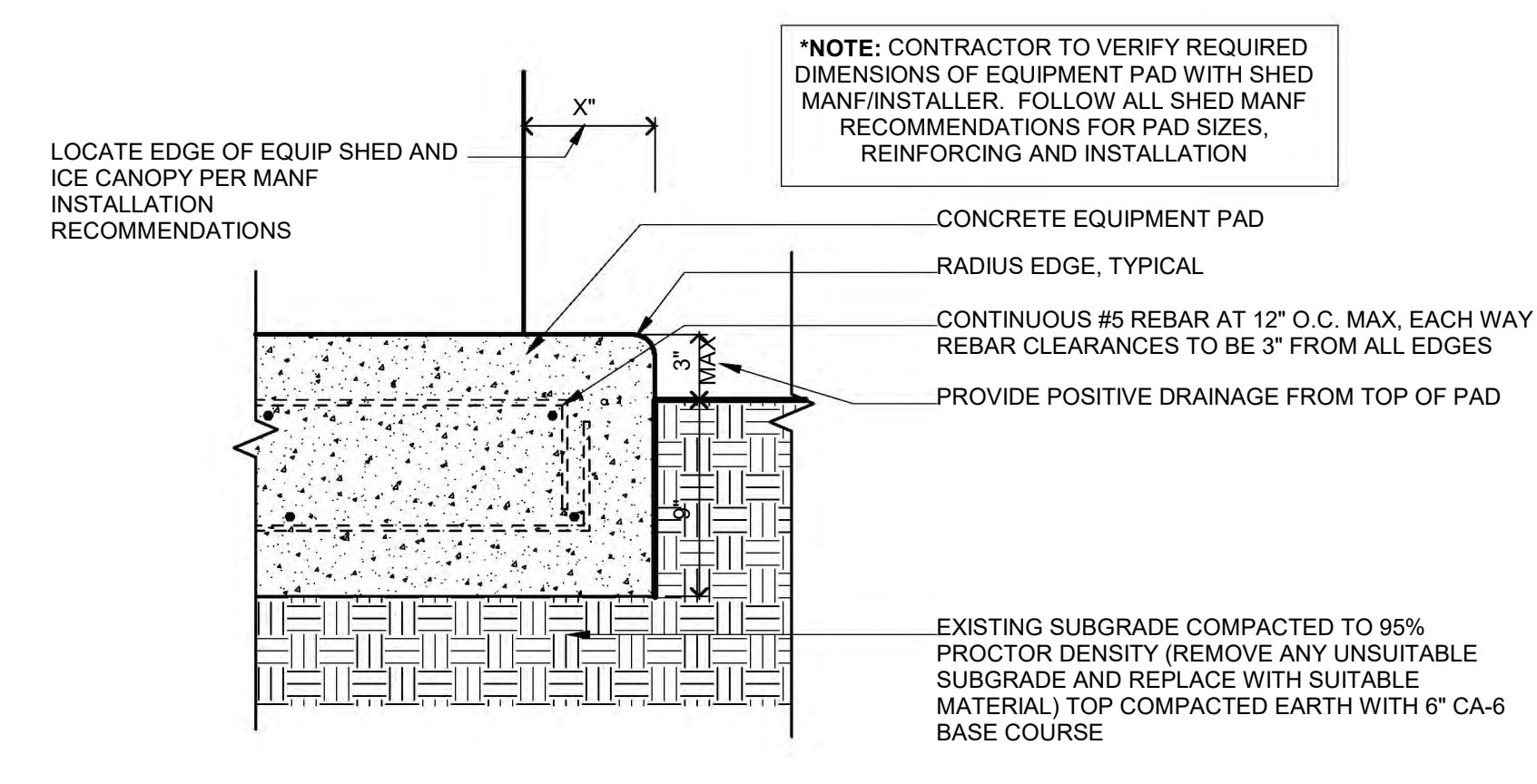
- REMOVE/DECOMMISSION EXISTING EQUIPMENT SHED - SEE ELECTRICAL.
- REMOVE PATIO BLOCKS AT EXISTING EQUIPMENT SHED.
- PROVIDE NEW CONCRETE PAD AT LOCATION OF NEW EQUIPMENT SHED - SEE DETAIL F6/A1.101.
- PROTECT EXISTING RADIO TOWER CONCRETE PADS/FOUNDATIONS TO REMAIN. CONTRACTOR RESPONSIBLE FOR SHORING AS REQUIRED FOR NEW WORK.
- PROTECT EXISTING FENCING TO REMAIN INCLUDING ALL GATES, LOCKS, FOUNDATIONS, ETC.
- PROTECT EXISTING GENERATOR AND PROPANE TANK TO REMAIN. REFER TO ELECTRICAL FOR CONNECTION TO NEW SHED. TRENCH PATHWAYS TO NEW SHED AND FILL TO MEET EXISTING GRADES.
- LINE OF TOWER STRUCTURE ABOVE. LOCATION OF SHELTER TO BE SITED OUTSIDE OF STRUCTURE LINES.
- NEW FIBERGLASS SHELTER WITH ICE CANOPY LOCATED EAST OF EXISTING TOWER (BASE BID), NEW FIBERGLASS SHELTER WITH ICE CANOPY LOCATED WEST OF EXISTING TOWER (ALTERNATE #1), REFURBISHED CONCRETE SHELTER LOCATED EAST OF TOWER (ALTERNATE #2), REFURBISHED CONCRETE SHELTER LOCATED WEST OF TOWER (ALTERNATE #3).



**D1 EQUIPMENT SHED DEMOLITION AND NEW WORK PLAN**  
1/4" = 1'-0"  
0 3 6'



**F1 SITE ACCESS PLAN**  
NOT TO SCALE



**F6 EQUIPMENT SHED CONCRETE PAD**  
1/2" = 1'-0"  
0 1/2 1'

I hereby certify that this plan, specification or report was prepared by me or under my direct supervision and that I am a duly Licensed ARCHITECT under the laws of the State of ILLINOIS

**MATT BICKEL**  
Arch Num Date 12/2023

Description	Revisions	
	Date	Num

Comm: 223018  
Date: 12/2023  
Drawn: TS  
Check: KE  
North

**EQUIPMENT SHED  
DEMOLITION AND  
NEW WORK PLAN**

Scale: As indicated  
**A1.101**





I hereby certify that this plan, specification or report was prepared by me or under my direct supervision and that I am a duly Licensed PROFESSIONAL ENGINEER under the laws of the State of ILLINOIS

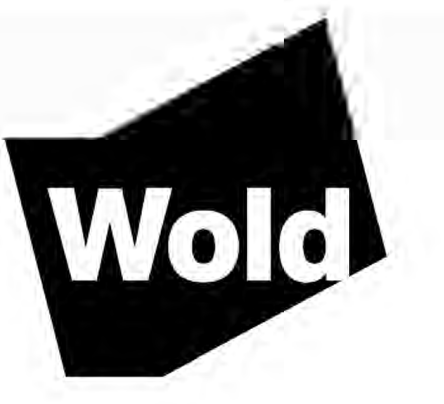
License Number: **Elec Name** Date: **12/2023**

Description	Revisions	
	Date	Num

Comm: **22310 / 923641**  
Date: **12/15/2023**  
Drawn: **RCS**  
Check: **DPM**

BASIC MATERIALS		FIRE ALARM / DETECTION SYSTEM		VOICE AND DATA RACEWAY SYSTEM		TELEVISION RACEWAY DISTRIBUTION SYSTEM		ABBREVIATIONS (CONT.)		GENERAL NOTES	
SYMBOL	DESCRIPTION	SYMBOL	DESCRIPTION	SYMBOL	DESCRIPTION	SYMBOL	DESCRIPTION	SYMBOL	DESCRIPTION	SYMBOL	DESCRIPTION
<p><b>GENERAL NOTES:</b></p> <ol style="list-style-type: none"> <li>SEE THE ELECTRICAL DEMOLITION NOTES ON THIS DRAWING.</li> <li>CIRCUIT NUMBERS ARE SHOWN FOR REFERENCE ONLY. THE CONTRACTOR SHALL VERIFY THE EXACT CIRCUITS TO UTILIZE AT THE SITE.</li> <li>SEE ARCHITECTURAL DRAWINGS AND ELEVATIONS FOR EXACT MOUNTING HEIGHTS AND LOCATIONS OF ALL ELECTRICAL DEVICES. PRIOR TO CIRCUITING.</li> <li>PROVIDE A SEPARATE GROUND WIRE. RUN WITH ALL NEW CIRCUITS. THE GROUND WIRE CAN BE SHARED FOR MULTIPLE CIRCUITS.</li> <li>ALL CIRCUITS SHALL BE RUN WITH DEDICATED NEUTRALS. SHARED NEUTRALS ARE NOT ALLOWED. THE NEUTRAL IS CONSIDERED A CURRENT CARRYING CONDUCTOR AND THE MAXIMUM NUMBER OF CURRENT CARRYING CONDUCTORS ALLOWED IN A RACEWAY IS EIGHT (8).</li> <li>ALL 120V HOMERUNS OVER 75 FEET SHALL BE RUN WITH A MINIMUM OF #10 WIRE AND ALL 120V HOMERUNS OVER 100 FEET SHALL BE RUN WITH A MINIMUM OF #8 WIRE.</li> <li>ALL LOW VOLTAGE WIRING RUN IN THE CEILING SPACE SHALL BE PLENUM RATED INCLUDING LIGHTING CONTROL WIRING, STRUCTURED CABLING, ETC.</li> </ol> <p><b>DEMOLITION NOTES:</b></p> <ol style="list-style-type: none"> <li>CONTRACTOR SHALL REFER TO THE ARCHITECTURAL DRAWINGS TO FAMILIARIZE HIMSELF WITH EXTENT OF REMODELING/ALTERATION WORK AND MORE SPECIFICALLY TO NOTE WHERE NEW PARTITIONING IS BEING INSTALLED, WHERE EXISTING PARTITIONING IS BEING REMOVED AND WHERE CEILING ARE BEING REMOVED AND/OR REPLACED, ETC.</li> <li>RACEWAY CONDUCTORS, BOXES, AND SUPPORTING DEVICES SHALL BECOME THE PROPERTY OF THE CONTRACTOR AND SHALL BE REMOVED FROM THE SITE AND DISPOSED OF BY THE CONTRACTOR.</li> <li>CONTRACTOR SHALL TOUR DEMOLITION AREAS WITH THE OWNER TO DETERMINE THE STATUS OF EQUIPMENT TO BE REMOVED DURING DEMOLITION. ALL EQUIPMENT THAT IS TO BE SALVAGED FOR REUSE BY THE OWNER SHALL BE REMOVED BY THE CONTRACTOR AND TRANSPORTED TO AN OWNER DESIGNATED STORAGE AREA ON THE SITE.</li> <li>CERTAIN EXISTING ELECTRICAL EQUIPMENT AND MATERIAL NOT INDICATED TO BE RETAINED AND/OR RELOCATED SHALL REMAIN THE PROPERTY OF THE OWNER AND SHALL BE STORED WHERE DIRECTED BY THE OWNER. EXISTING ELECTRICAL EQUIPMENT BEING REMOVED THAT THE OWNER DOES NOT WISH TO RETAIN SHALL BECOME THE PROPERTY OF THE CONTRACTOR AND SHALL BE REMOVED FROM THE PREMISES.</li> <li>ELECTRICAL CONTRACTOR SHALL BE RESPONSIBLE FOR HIS OWN DEMOLITION, REMOVAL, CAPPING, STORING, ABANDONING, DISCONNECTING, RELOCATING AND RECONNECTING OF EXISTING ELECTRICAL EQUIPMENT AND MATERIAL. ALL CUTTING, PATCHING, REPAIRING AND REFINISHING OF EXISTING CONSTRUCTION AS REQUIRED TO ACCOMMODATE INSTALLATION OF NEW WORK OR DEMOLITION AND/OR REMOVAL OF EXISTING ELECTRICAL EQUIPMENT SHALL BE THE RESPONSIBILITY OF THE CONTRACTOR. ALL PATCHING, REPAIRING, REPLACING AND REFINISHING SHALL MATCH THE EXISTING CONSTRUCTION AS NEARLY AS POSSIBLE.</li> <li>PROTECT ADJACENT MATERIALS INDICATED TO REMAIN. INSTALL AND MAINTAIN DUST AND NOISE BARRIERS TO KEEP DIRT, DUCT, AND NOISE FROM BEING TRANSMITTED TO ADJACENT AREAS. REMOVE PROTECTIVE AND BARRIERS AFTER DEMOLITION OPERATIONS ARE COMPLETE.</li> <li>IT IS MANDATORY THAT THE EXISTING BUILDING REMAIN IN CONTINUOUS AND NON-INTERRUPTED OPERATION DURING REMODELING/ALTERING OF THE EXISTING BUILDING. THE SPECIFIC AREAS BEING REMODELED/ALTERED AT ANY SCHEDULED TIME ARE OBVIOUSLY EXCLUSIVE OF THIS STATEMENT. SERVICES TO EXISTING BUILDING SHALL BE KEPT IN CONTINUOUS OPERATION INCLUDING POWER, LIGHTING, TELEPHONE, FIRE ALARM, ETC. ANY ADDITIONALLY NECESSARY INTERRUPTION OF THESE SERVICES TO ACCOMPLISH PROJECT CONSTRUCTION SHALL BE ARRANGED WITH THE OWNER THROUGH THE GENERAL CONTRACTOR A MINIMUM OF TWO (2) WEEKS IN ADVANCE. TEMPORARY SERVICES SHALL BE FURNISHED AND INSTALLED WHERE NECESSARY TO ACCOMPLISH THIS PURPOSE. TEMPORARIES SHALL BE REMOVED ONLY AFTER NEW PERMANENT SERVICES ARE INSTALLED AND FULLY OPERATIONAL.</li> <li>NOTE THAT EVEN IN REMODELED/ALTERED AREAS, ANY FEEDERS, CONDUITS, BRANCH CIRCUITS, SIGNAL AND TELEPHONE CIRCUITS, ETC. PASSING THROUGH THE REMODELED AREAS TO SERVE (OR BE SERVED FROM) EXISTING ADJACENT, REMOTE OR SURROUNDING AREAS (THAT ARE TO REMAIN) SHALL BE RETAINED AND KEPT OPERATIONAL AND SHALL BE REROUTED IN ALL CASES WHERE THEY INTERFERE WITH ANY NEW WORK OR NEW USAGE TO BE ACCOMPLISHED IN THE REMODELED AREAS.</li> <li>EXCEPT WHERE OTHERWISE NOTED ON DRAWING TO BE RETAINED, RELOCATED OR HEREAFTER NOTED, (SEE NOTE 10) ALL EXISTING ELECTRICAL EQUIPMENT AND MATERIAL IN AREAS TO BE REMODELED/ALTERED SHALL BE REMOVED AS FOLLOWS WHERE THEY SERVE NO FURTHER PURPOSE AND WHERE THEY INTERFERE WITH PROPOSED CONSTRUCTION AND/OR INTERFERE WITH PROPOSED USAGE OF SPACE BY OWNER.</li> <li>REMOVE ANY CONDUITS PROTRUDING ABOVE FINISHED FLOOR AND CAP AND FINISH OVER WITH FLOOR MATERIAL TO MATCH EXISTING.</li> <li>REMOVE ALL LIGHTING FIXTURES, RECEPTACLES, SWITCHES, ETC. AND ASSOCIATED WIRING.</li> <li>REMOVE ALL SURFACE MOUNTED CONDUIT, BOXES AND THEIR ASSOCIATED WIRING.</li> <li>REMOVE ALL CONCEALED RACEWAYS, BOXES AND WIRING FROM PARTITIONS BEING DEMOLISHED.</li> <li>REMOVE ALL EXISTING WIRING/CABLING FROM ALL CONCEALED RACEWAYS IN PARTITIONS THAT ARE TO REMAIN.</li> <li>PROVIDE BLANK COVER PLATES FOR ALL EXISTING FLUSH MOUNTED BOXES IN EXISTING WALLS THAT ARE IRREMOVABLE. FINISH OF PLATES SHALL MATCH THOSE SPECIFIED FOR NEW SWITCHES AND RECEPTACLES.</li> <li>CONTRACTOR SHALL REMOVE THE RECEPTACLES AND ASSOCIATED WIRING TO THE SOURCE PANEL. IN CASE OF EXISTING WALLS THAT WILL NOT BE DEMOLISHED THE ASSOCIATED CONDUITS SHALL STAY AND BE CUT AND CAPPED @ ABOVE CEILING WHERE THE REMOVED RECEPTACLE AND LIGHTING FIXTURE CIRCUITS FEEDING THE OTHER RECEPTACLES AND LIGHTING FIXTURES CONTRACTOR SHALL MAKE SURE THE POWER IS NOT DISCONNECTED TO THE OTHER RECEPTACLES AND LIGHTING FIXTURES.</li> <li>ALL LOW VOLTAGE TELEDATA CABLING TO BE REMOVED SHALL BE REMOVED ALL THE WAY TO TELEDATA ROOM AND REMOVED OFF THE BLOCKS.</li> </ol>											
<p><b>DEVICES ABBREVIATION TAGS:</b></p> <p>6C POKE-THRU WITH 6" CORE DRILL 4G POKE-THRU WITH 4" CORE DRILL 4G FOUR-GANG FLOOR BOX 6G SIX-GANG FLOOR BOX 8G EIGHT-GANG FLOOR BOX AV DOUBLE DUPLEX RECEPTACLE WITH DEDICATED CIRCUIT FOR AV RACK OR CART RECEPTACLE CONTROLLED PER ASHRAE 90.1 (2010), PROVIDE POWER PACK FOR RECEPTACLE CIRCUIT. TO BE CONTROLLED THROUGH LOCAL ROOM OCCUPANCY (SENSORS); PROVIDE DEVICE WITH BLUE DOT OR UNIVERSAL POWER SYMBOL EXISTING TO REMAIN ETR HOSPITAL GRADE IG ISOLATED GROUND (ORANGE DEVICE) RL RELOCATED TR TAMPER RESISTANT TV RECEPTACLE ADJACENT TO TV OUTLET, COORDINATE HEIGHT W/ ARCHITECT U DUPLEX RECEPTACLE WITH (2) USB PORTS WP WEATHERPROOF S SINGLE POLE SWITCH (SUBSCRIPT INDICATES ITEM CONTROLLED) S3 THREE-WAY SWITCH S4 FOUR-WAY SWITCH S1 SINGLE POLE KEY SWITCH S1K DIGITAL TIMER SWITCH W/ 5 MIN. WARNING FLASH WALL MOUNTED DUAL TECHNOLOGY OCCUPANCY SENSOR SWITCH, DUAL RELAY S2S WALL MOUNTED DUAL TECHNOLOGY OCCUPANCY SENSOR SWITCH S2S WALL MOUNTED DUAL TECHNOLOGY VACANCY SENSOR SWITCH S2S WALL MOUNTED DUAL TECHNOLOGY DIMMING/OCCUPANCY SENSOR SWITCH S2V LOW VOLTAGE SWITCH S2V LOW VOLTAGE OVERRIDE SWITCH S2D LOW VOLTAGE OVERRIDE SWITCH WITH DIMMING SF FAN SWITCH SM MOTOR RATED SWITCH S0 DIMMER SWITCH, LINE VOLTAGE S0 WALL MOUNTED DUAL TECHNOLOGY OCCUPANCY SENSOR S0 CEILING MOUNTED DUAL TECHNOLOGY OCCUPANCY SENSOR S0 DAYLIGHT SENSOR CEILING MOUNTED S0 DAYLIGHT SENSOR WALL MOUNTED S0 VACANCY SENSOR CEILING MOUNTED S0 VACANCY SENSOR WALL MOUNTED S0 PHOTOCELL, MOUNTED ON ROOF FACING NORTH NOTE: DIAGONAL MARKS INDICATED ON ANY DEVICE REPRESENTS DEVICES CONNECTED TO EMERGENCY CIRCUIT (RED DEVICE FOR RECEPTACLE). TYPICAL FOR ANY DEVICE IN LEGEND</p>											
<p><b>MANHOLE</b> PULLBOX HANDHOLE TRANSFORMER AUTOMATIC TRANSFER SWITCH NEMA RATING, NEMA 1 UNLESS OTHERWISE NOTED NON-FUSED DISCONNECT SWITCH, RATING AS NOTED AR = AMPERE RATING OF SWITCH 4X SS = NEMA 4X STAINLESS STEEL ENCLOSURE NEMA RATING, NEMA 1 UNLESS OTHERWISE NOTED FUSED DISCONNECT AF = AMPERE RATING OF FUSE AR = AMPERE RATING OF SWITCH 4X SS = NEMA 4X STAINLESS STEEL ENCLOSURE NEMA STARTER SIZE # OF POLES COMBINATION MAGNETIC MOTOR STARTER, SIZE AS NOTED, 3-POLE UNLESS OTHERWISE NOTED 4X SS = NEMA 4X STAINLESS STEEL ENCLOSURE NEMA STARTER SIZE SWITCHBOARD/ SWITCHGEAR DISTRIBUTION PANEL BRANCH CIRCUIT PANELBOARD, OVER 240 VOLTS, SURFACE MOUNTED BRANCH CIRCUIT PANELBOARD, OVER 240 VOLTS, FLUSH MOUNTED BRANCH CIRCUIT PANELBOARD, UNDER 240 VOLTS, SURFACE MOUNTED BRANCH CIRCUIT PANELBOARD, UNDER 240 VOLTS, FLUSH MOUNTED CONDUIT CONCEALED ABOVE CEILING OR IN WALL CONDUIT EXPOSED CONDUIT CONCEALED IN SLAB, UNDERGROUND OR UNDER FLOOR CONDUIT TURNING UP TO ELECTRICAL PANEL CONDUIT TURNING UP CONDUIT TURNING DOWN CONDUIT STUBBED OUT OR UP CONDUIT CONTINUED FLEXIBLE CONDUIT CONDUIT SEAL-OFF FITTING GROUND OR GROUND ROD AS NOTED EXISTING TO BE REMOVED (HEAVY, DASHED LINE) EXISTING TO REMAIN (LIGHT, SOLID LINE) NEW (HEAVY, SOLID LINE)</p>											
<p><b>MANHOLE</b> PULLBOX HANDHOLE TRANSFORMER AUTOMATIC TRANSFER SWITCH NEMA RATING, NEMA 1 UNLESS OTHERWISE NOTED NON-FUSED DISCONNECT SWITCH, RATING AS NOTED AR = AMPERE RATING OF SWITCH 4X SS = NEMA 4X STAINLESS STEEL ENCLOSURE NEMA RATING, NEMA 1 UNLESS OTHERWISE NOTED FUSED DISCONNECT AF = AMPERE RATING OF FUSE AR = AMPERE RATING OF SWITCH 4X SS = NEMA 4X STAINLESS STEEL ENCLOSURE NEMA STARTER SIZE # OF POLES COMBINATION MAGNETIC MOTOR STARTER, SIZE AS NOTED, 3-POLE UNLESS OTHERWISE NOTED 4X SS = NEMA 4X STAINLESS STEEL ENCLOSURE NEMA STARTER SIZE SWITCHBOARD/ SWITCHGEAR DISTRIBUTION PANEL BRANCH CIRCUIT PANELBOARD, OVER 240 VOLTS, SURFACE MOUNTED BRANCH CIRCUIT PANELBOARD, OVER 240 VOLTS, FLUSH MOUNTED BRANCH CIRCUIT PANELBOARD, UNDER 240 VOLTS, SURFACE MOUNTED BRANCH CIRCUIT PANELBOARD, UNDER 240 VOLTS, FLUSH MOUNTED CONDUIT CONCEALED ABOVE CEILING OR IN WALL CONDUIT EXPOSED CONDUIT CONCEALED IN SLAB, UNDERGROUND OR UNDER FLOOR CONDUIT TURNING UP TO ELECTRICAL PANEL CONDUIT TURNING UP CONDUIT TURNING DOWN CONDUIT STUBBED OUT OR UP CONDUIT CONTINUED FLEXIBLE CONDUIT CONDUIT SEAL-OFF FITTING GROUND OR GROUND ROD AS NOTED EXISTING TO BE REMOVED (HEAVY, DASHED LINE) EXISTING TO REMAIN (LIGHT, SOLID LINE) NEW (HEAVY, SOLID LINE)</p>											
<p><b>MANHOLE</b> PULLBOX HANDHOLE TRANSFORMER AUTOMATIC TRANSFER SWITCH NEMA RATING, NEMA 1 UNLESS OTHERWISE NOTED NON-FUSED DISCONNECT SWITCH, RATING AS NOTED AR = AMPERE RATING OF SWITCH 4X SS = NEMA 4X STAINLESS STEEL ENCLOSURE NEMA RATING, NEMA 1 UNLESS OTHERWISE NOTED FUSED DISCONNECT AF = AMPERE RATING OF FUSE AR = AMPERE RATING OF SWITCH 4X SS = NEMA 4X STAINLESS STEEL ENCLOSURE NEMA STARTER SIZE # OF POLES COMBINATION MAGNETIC MOTOR STARTER, SIZE AS NOTED, 3-POLE UNLESS OTHERWISE NOTED 4X SS = NEMA 4X STAINLESS STEEL ENCLOSURE NEMA STARTER SIZE SWITCHBOARD/ SWITCHGEAR DISTRIBUTION PANEL BRANCH CIRCUIT PANELBOARD, OVER 240 VOLTS, SURFACE MOUNTED BRANCH CIRCUIT PANELBOARD, OVER 240 VOLTS, FLUSH MOUNTED BRANCH CIRCUIT PANELBOARD, UNDER 240 VOLTS, SURFACE MOUNTED BRANCH CIRCUIT PANELBOARD, UNDER 240 VOLTS, FLUSH MOUNTED CONDUIT CONCEALED ABOVE CEILING OR IN WALL CONDUIT EXPOSED CONDUIT CONCEALED IN SLAB, UNDERGROUND OR UNDER FLOOR CONDUIT TURNING UP TO ELECTRICAL PANEL CONDUIT TURNING UP CONDUIT TURNING DOWN CONDUIT STUBBED OUT OR UP CONDUIT CONTINUED FLEXIBLE CONDUIT CONDUIT SEAL-OFF FITTING GROUND OR GROUND ROD AS NOTED EXISTING TO BE REMOVED (HEAVY, DASHED LINE) EXISTING TO REMAIN (LIGHT, SOLID LINE) NEW (HEAVY, SOLID LINE)</p>											
<p><b>MANHOLE</b> PULLBOX HANDHOLE TRANSFORMER AUTOMATIC TRANSFER SWITCH NEMA RATING, NEMA 1 UNLESS OTHERWISE NOTED NON-FUSED DISCONNECT SWITCH, RATING AS NOTED AR = AMPERE RATING OF SWITCH 4X SS = NEMA 4X STAINLESS STEEL ENCLOSURE NEMA RATING, NEMA 1 UNLESS OTHERWISE NOTED FUSED DISCONNECT AF = AMPERE RATING OF FUSE AR = AMPERE RATING OF SWITCH 4X SS = NEMA 4X STAINLESS STEEL ENCLOSURE NEMA STARTER SIZE # OF POLES COMBINATION MAGNETIC MOTOR STARTER, SIZE AS NOTED, 3-POLE UNLESS OTHERWISE NOTED 4X SS = NEMA 4X STAINLESS STEEL ENCLOSURE NEMA STARTER SIZE SWITCHBOARD/ SWITCHGEAR DISTRIBUTION PANEL BRANCH CIRCUIT PANELBOARD, OVER 240 VOLTS, SURFACE MOUNTED BRANCH CIRCUIT PANELBOARD, OVER 240 VOLTS, FLUSH MOUNTED BRANCH CIRCUIT PANELBOARD, UNDER 240 VOLTS, SURFACE MOUNTED BRANCH CIRCUIT PANELBOARD, UNDER 240 VOLTS, FLUSH MOUNTED CONDUIT CONCEALED ABOVE CEILING OR IN WALL CONDUIT EXPOSED CONDUIT CONCEALED IN SLAB, UNDERGROUND OR UNDER FLOOR CONDUIT TURNING UP TO ELECTRICAL PANEL CONDUIT TURNING UP CONDUIT TURNING DOWN CONDUIT STUBBED OUT OR UP CONDUIT CONTINUED FLEXIBLE CONDUIT CONDUIT SEAL-OFF FITTING GROUND OR GROUND ROD AS NOTED EXISTING TO BE REMOVED (HEAVY, DASHED LINE) EXISTING TO REMAIN (LIGHT, SOLID LINE) NEW (HEAVY, SOLID LINE)</p>											
<p><b>MANHOLE</b> PULLBOX HANDHOLE TRANSFORMER AUTOMATIC TRANSFER SWITCH NEMA RATING, NEMA 1 UNLESS OTHERWISE NOTED NON-FUSED DISCONNECT SWITCH, RATING AS NOTED AR = AMPERE RATING OF SWITCH 4X SS = NEMA 4X STAINLESS STEEL ENCLOSURE NEMA RATING, NEMA 1 UNLESS OTHERWISE NOTED FUSED DISCONNECT AF = AMPERE RATING OF FUSE AR = AMPERE RATING OF SWITCH 4X SS = NEMA 4X STAINLESS STEEL ENCLOSURE NEMA STARTER SIZE # OF POLES COMBINATION MAGNETIC MOTOR STARTER, SIZE AS NOTED, 3-POLE UNLESS OTHERWISE NOTED 4X SS = NEMA 4X STAINLESS STEEL ENCLOSURE NEMA STARTER SIZE SWITCHBOARD/ SWITCHGEAR DISTRIBUTION PANEL BRANCH CIRCUIT PANELBOARD, OVER 240 VOLTS, SURFACE MOUNTED BRANCH CIRCUIT PANELBOARD, OVER 240 VOLTS, FLUSH MOUNTED BRANCH CIRCUIT PANELBOARD, UNDER 240 VOLTS, SURFACE MOUNTED BRANCH CIRCUIT PANELBOARD, UNDER 240 VOLTS, FLUSH MOUNTED CONDUIT CONCEALED ABOVE CEILING OR IN WALL CONDUIT EXPOSED CONDUIT CONCEALED IN SLAB, UNDERGROUND OR UNDER FLOOR CONDUIT TURNING UP TO ELECTRICAL PANEL CONDUIT TURNING UP CONDUIT TURNING DOWN CONDUIT STUBBED OUT OR UP CONDUIT CONTINUED FLEXIBLE CONDUIT CONDUIT SEAL-OFF FITTING GROUND OR GROUND ROD AS NOTED EXISTING TO BE REMOVED (HEAVY, DASHED LINE) EXISTING TO REMAIN (LIGHT, SOLID LINE) NEW (HEAVY, SOLID LINE)</p>											
<p><b>MANHOLE</b> PULLBOX HANDHOLE TRANSFORMER AUTOMATIC TRANSFER SWITCH NEMA RATING, NEMA 1 UNLESS OTHERWISE NOTED NON-FUSED DISCONNECT SWITCH, RATING AS NOTED AR = AMPERE RATING OF SWITCH 4X SS = NEMA 4X STAINLESS STEEL ENCLOSURE NEMA RATING, NEMA 1 UNLESS OTHERWISE NOTED FUSED DISCONNECT AF = AMPERE RATING OF FUSE AR = AMPERE RATING OF SWITCH 4X SS = NEMA 4X STAINLESS STEEL ENCLOSURE NEMA STARTER SIZE # OF POLES COMBINATION MAGNETIC MOTOR STARTER, SIZE AS NOTED, 3-POLE UNLESS OTHERWISE NOTED 4X SS = NEMA 4X STAINLESS STEEL ENCLOSURE NEMA STARTER SIZE SWITCHBOARD/ SWITCHGEAR DISTRIBUTION PANEL BRANCH CIRCUIT PANELBOARD, OVER 240 VOLTS, SURFACE MOUNTED BRANCH CIRCUIT PANELBOARD, OVER 240 VOLTS, FLUSH MOUNTED BRANCH CIRCUIT PANELBOARD, UNDER 240 VOLTS, SURFACE MOUNTED BRANCH CIRCUIT PANELBOARD, UNDER 240 VOLTS, FLUSH MOUNTED CONDUIT CONCEALED ABOVE CEILING OR IN WALL CONDUIT EXPOSED CONDUIT CONCEALED IN SLAB, UNDERGROUND OR UNDER FLOOR CONDUIT TURNING UP TO ELECTRICAL PANEL CONDUIT TURNING UP CONDUIT TURNING DOWN CONDUIT STUBBED OUT OR UP CONDUIT CONTINUED FLEXIBLE CONDUIT CONDUIT SEAL-OFF FITTING GROUND OR GROUND ROD AS NOTED EXISTING TO BE REMOVED (HEAVY, DASHED LINE) EXISTING TO REMAIN (LIGHT, SOLID LINE) NEW (HEAVY, SOLID LINE)</p>											
<p><b>MANHOLE</b> PULLBOX HANDHOLE TRANSFORMER AUTOMATIC TRANSFER SWITCH NEMA RATING, NEMA 1 UNLESS OTHERWISE NOTED NON-FUSED DISCONNECT SWITCH, RATING AS NOTED AR = AMPERE RATING OF SWITCH 4X SS = NEMA 4X STAINLESS STEEL ENCLOSURE NEMA RATING, NEMA 1 UNLESS OTHERWISE NOTED FUSED DISCONNECT AF = AMPERE RATING OF FUSE AR = AMPERE RATING OF SWITCH 4X SS = NEMA 4X STAINLESS STEEL ENCLOSURE NEMA STARTER SIZE # OF POLES COMBINATION MAGNETIC MOTOR STARTER, SIZE AS NOTED, 3-POLE UNLESS OTHERWISE NOTED 4X SS = NEMA 4X STAINLESS STEEL ENCLOSURE NEMA STARTER SIZE SWITCHBOARD/ SWITCHGEAR DISTRIBUTION PANEL BRANCH CIRCUIT PANELBOARD, OVER 240 VOLTS, SURFACE MOUNTED BRANCH CIRCUIT PANELBOARD, OVER 240 VOLTS, FLUSH MOUNTED BRANCH CIRCUIT PANELBOARD, UNDER 240 VOLTS, SURFACE MOUNTED BRANCH CIRCUIT PANELBOARD, UNDER 240 VOLTS, FLUSH MOUNTED CONDUIT CONCEALED ABOVE CEILING OR IN WALL CONDUIT EXPOSED CONDUIT CONCEALED IN SLAB, UNDERGROUND OR UNDER FLOOR CONDUIT TURNING UP TO ELECTRICAL PANEL CONDUIT TURNING UP CONDUIT TURNING DOWN CONDUIT STUBBED OUT OR UP CONDUIT CONTINUED FLEXIBLE CONDUIT CONDUIT SEAL-OFF FITTING GROUND OR GROUND ROD AS NOTED EXISTING TO BE REMOVED (HEAVY, DASHED LINE) EXISTING TO REMAIN (LIGHT, SOLID LINE) NEW (HEAVY, SOLID LINE)</p>											
<p><b>MANHOLE</b> PULLBOX HANDHOLE TRANSFORMER AUTOMATIC TRANSFER SWITCH NEMA RATING, NEMA 1 UNLESS OTHERWISE NOTED NON-FUSED DISCONNECT SWITCH, RATING AS NOTED AR = AMPERE RATING OF SWITCH 4X SS = NEMA 4X STAINLESS STEEL ENCLOSURE NEMA RATING, NEMA 1 UNLESS OTHERWISE NOTED FUSED DISCONNECT AF = AMPERE RATING OF FUSE AR = AMPERE RATING OF SWITCH 4X SS = NEMA 4X STAINLESS STEEL ENCLOSURE NEMA STARTER SIZE # OF POLES COMBINATION MAGNETIC MOTOR STARTER, SIZE AS NOTED, 3-POLE UNLESS OTHERWISE NOTED 4X SS = NEMA 4X STAINLESS STEEL ENCLOSURE NEMA STARTER SIZE SWITCHBOARD/ SWITCHGEAR DISTRIBUTION PANEL BRANCH CIRCUIT PANELBOARD, OVER 240 VOLTS, SURFACE MOUNTED BRANCH CIRCUIT PANELBOARD, OVER 240 VOLTS, FLUSH MOUNTED BRANCH CIRCUIT PANELBOARD, UNDER 240 VOLTS, SURFACE MOUNTED BRANCH CIRCUIT PANELBOARD, UNDER 240 VOLTS, FLUSH MOUNTED CONDUIT CONCEALED ABOVE CEILING OR IN WALL CONDUIT EXPOSED CONDUIT CONCEALED IN SLAB, UNDERGROUND OR UNDER FLOOR CONDUIT TURNING UP TO ELECTRICAL PANEL CONDUIT TURNING UP CONDUIT TURNING DOWN CONDUIT STUBBED OUT OR UP CONDUIT CONTINUED FLEXIBLE CONDUIT CONDUIT SEAL-OFF FITTING GROUND OR GROUND ROD AS NOTED EXISTING TO BE REMOVED (HEAVY, DASHED LINE) EXISTING TO REMAIN (LIGHT, SOLID LINE) NEW (HEAVY, SOLID LINE)</p>											
<p><b>MANHOLE</b> PULLBOX HANDHOLE TRANSFORMER AUTOMATIC TRANSFER SWITCH NEMA RATING, NEMA 1 UNLESS OTHERWISE NOTED NON-FUSED DISCONNECT SWITCH, RATING AS NOTED AR = AMPERE RATING OF SWITCH 4X SS = NEMA 4X STAINLESS STEEL ENCLOSURE NEMA RATING, NEMA 1 UNLESS OTHERWISE NOTED FUSED DISCONNECT AF = AMPERE RATING OF FUSE AR = AMPERE RATING OF SWITCH 4X SS = NEMA 4X STAINLESS STEEL ENCLOSURE NEMA STARTER SIZE # OF POLES COMBINATION MAGNETIC MOTOR STARTER, SIZE AS NOTED, 3-POLE UNLESS OTHERWISE NOTED 4X SS = NEMA 4X STAINLESS STEEL ENCLOSURE NEMA STARTER SIZE SWITCHBOARD/ SWITCHGEAR DISTRIBUTION PANEL BRANCH CIRCUIT PANELBOARD, OVER 240 VOLTS, SURFACE MOUNTED BRANCH CIRCUIT PANELBOARD, OVER 240 VOLTS, FLUSH MOUNTED BRANCH CIRCUIT PANELBOARD, UNDER 240 VOLTS, SURFACE MOUNTED BRANCH CIRCUIT PANELBOARD, UNDER 240 VOLTS, FLUSH MOUNTED CONDUIT CONCEALED ABOVE CEILING OR IN WALL CONDUIT EXPOSED CONDUIT CONCEALED IN SLAB, UNDERGROUND OR UNDER FLOOR CONDUIT TURNING UP TO ELECTRICAL PANEL CONDUIT TURNING UP CONDUIT TURNING DOWN CONDUIT STUBBED OUT OR UP CONDUIT CONTINUED FLEXIBLE CONDUIT CONDUIT SEAL-OFF FITTING GROUND OR GROUND ROD AS NOTED EXISTING TO BE REMOVED (HEAVY, DASHED LINE) EXISTING TO REMAIN (LIGHT, SOLID LINE) NEW (HEAVY, SOLID LINE)</p>											
<p><b>MANHOLE</b> PULLBOX HANDHOLE TRANSFORMER AUTOMATIC TRANSFER SWITCH NEMA RATING, NEMA 1 UNLESS OTHERWISE NOTED NON-FUSED DISCONNECT SWITCH, RATING AS NOTED AR = AMPERE RATING OF SWITCH 4X SS = NEMA 4X STAINLESS STEEL ENCLOSURE NEMA RATING, NEMA 1 UNLESS OTHERWISE NOTED FUSED DISCONNECT AF = AMPERE RATING OF FUSE AR = AMPERE RATING OF SWITCH 4X SS = NEMA 4X STAINLESS STEEL ENCLOSURE NEMA STARTER SIZE # OF POLES COMBINATION MAGNETIC MOTOR STARTER, SIZE AS NOTED, 3-POLE UNLESS OTHERWISE NOTED 4X SS = NEMA 4X STAINLESS STEEL ENCLOSURE NEMA STARTER SIZE SWITCHBOARD/ SWITCHGEAR DISTRIBUTION PANEL BRANCH CIRCUIT PANELBOARD, OVER 240 VOLTS, SURFACE MOUNTED BRANCH CIRCUIT PANELBOARD, OVER 240 VOLTS, FLUSH MOUNTED BRANCH CIRCUIT PANELBOARD, UNDER 240 VOLTS, SURFACE MOUNTED BRANCH CIRCUIT PANELBOARD, UNDER 240 VOLTS, FLUSH MOUNTED CONDUIT CONCEALED ABOVE CEILING OR IN WALL CONDUIT EXPOSED CONDUIT CONCEALED IN SLAB, UNDERGROUND OR UNDER FLOOR CONDUIT TURNING UP TO ELECTRICAL PANEL CONDUIT TURNING UP CONDUIT TURNING DOWN CONDUIT STUBBED OUT OR UP CONDUIT CONTINUED FLEXIBLE CONDUIT CONDUIT SEAL-OFF FITTING GROUND OR GROUND ROD AS NOTED EXISTING TO BE REMOVED (HEAVY, DASHED LINE) EXISTING TO REMAIN (LIGHT, SOLID LINE) NEW (HEAVY, SOLID LINE)</p>											
<p><b>MANHOLE</b> PULLBOX HANDHOLE TRANSFORMER AUTOMATIC TRANSFER SWITCH NEMA RATING, NEMA 1 UNLESS OTHERWISE NOTED NON-FUSED DISCONNECT SWITCH, RATING AS NOTED AR = AMPERE RATING OF SWITCH 4X SS = NEMA 4X STAINLESS STEEL ENCLOSURE NEMA RATING, NEMA 1 UNLESS OTHERWISE NOTED FUSED DISCONNECT AF = AMPERE RATING OF FUSE AR = AMPERE RATING OF SWITCH 4X SS = NEMA 4X STAINLESS STEEL ENCLOSURE NEMA STARTER SIZE # OF POLES COMBINATION MAGNETIC MOTOR STARTER, SIZE AS NOTED, 3-POLE UNLESS OTHERWISE NOTED 4X SS = NEMA 4X STAINLESS STEEL ENCLOSURE NEMA STARTER SIZE SWITCHBOARD/ SWITCHGEAR DISTRIBUTION PANEL BRANCH CIRCUIT PANELBOARD, OVER 240 VOLTS, SURFACE MOUNTED BRANCH CIRCUIT PANELBOARD, OVER 240 VOLTS, FLUSH MOUNTED BRANCH CIRCUIT PANELBOARD, UNDER 240 VOLTS, SURFACE MOUNTED BRANCH CIRCUIT PANELBOARD, UNDER 240 VOLTS, FLUSH MOUNTED CONDUIT CONCEALED ABOVE CEILING OR IN WALL CONDUIT EXPOSED CONDUIT CONCEALED IN SLAB, UNDERGROUND OR UNDER FLOOR CONDUIT TURNING UP TO ELECTRICAL PANEL CONDUIT TURNING UP CONDUIT TURNING DOWN CONDUIT STUBBED OUT OR UP CONDUIT CONTINUED FLEXIBLE CONDUIT CONDUIT SEAL-OFF FITTING GROUND OR GROUND ROD AS NOTED EXISTING TO BE REMOVED (HEAVY, DASHED LINE) EXISTING TO REMAIN (LIGHT, SOLID LINE) NEW (HEAVY, SOLID LINE)</p>											
<p><b>MANHOLE</b> PULLBOX HANDHOLE TRANSFORMER AUTOMATIC TRANSFER SWITCH NEMA RATING, NEMA 1 UNLESS OTHERWISE NOTED NON-FUSED DISCONNECT SWITCH, RATING AS NOTED AR = AMPERE RATING OF SWITCH 4X SS = NEMA 4X STAINLESS STEEL ENCLOSURE NEMA RATING, NEMA 1 UNLESS OTHERWISE NOTED FUSED DISCONNECT AF = AMPERE RATING OF FUSE AR = AMPERE RATING OF SWITCH 4X SS = NEMA 4X STAINLESS STEEL ENCLOSURE NEMA STARTER SIZE # OF POLES COMBINATION MAGNETIC MOTOR STARTER, SIZE AS NOTED, 3-POLE UNLESS OTHERWISE NOTED 4X SS = NEMA 4X STAINLESS STEEL ENCLOSURE NEMA STARTER SIZE SWITCHBOARD/ SWITCHGEAR DISTRIBUTION PANEL BRANCH CIRCUIT PANELBOARD, OVER 240 VOLTS, SURFACE MOUNTED BRANCH CIRCUIT PANELBOARD, OVER 240 VOLTS, FLUSH MOUNTED BRANCH CIRCUIT PANELBOARD, UNDER 240 VOLTS, SURFACE MOUNTED BRANCH CIRCUIT PANELBOARD, UNDER 240 VOLTS, FLUSH MOUNTED CONDUIT CONCEALED ABOVE CEILING OR IN WALL CONDUIT EXPOSED CONDUIT CONCEALED IN SLAB, UNDERGROUND OR UNDER FLOOR CONDUIT TURNING UP TO ELECTRICAL PANEL CONDUIT TURNING UP CONDUIT TURNING DOWN CONDUIT STUBBED OUT OR UP CONDUIT CONTINUED FLEXIBLE CONDUIT CONDUIT SEAL-OFF FITTING GROUND OR GROUND ROD AS NOTED EXISTING TO BE REMOVED (HEAVY, DASHED LINE) EXISTING TO REMAIN (LIGHT, SOLID LINE) NEW (HEAVY, SOLID LINE)</p>											
<p><b>MANHOLE</b> PULLBOX HANDHOLE TRANSFORMER AUTOMATIC TRANSFER SWITCH NEMA RATING, NEMA 1 UNLESS OTHERWISE NOTED NON-FUSED DISCONNECT SWITCH, RATING AS NOTED AR = AMPERE RATING OF SWITCH 4X SS = NEMA 4X STAINLESS STEEL ENCLOSURE NEMA RATING, NEMA 1 UNLESS OTHERWISE NOTED FUSED DISCONNECT AF = AMPERE RATING OF FUSE AR = AMPERE RATING OF SWITCH 4X SS = NEMA 4X STAINLESS STEEL ENCLOSURE NEMA STARTER SIZE # OF POLES COMBINATION MAGNETIC MOTOR STARTER, SIZE AS NOTED, 3-POLE UNLESS OTHERWISE NOTED 4X SS = NEMA 4X STAINLESS STEEL ENCLOSURE NEMA STARTER SIZE SWITCHBOARD/ SWITCHGEAR DISTRIBUTION PANEL BRANCH CIRCUIT PANELBOARD, OVER 240 VOLTS, SURFACE MOUNTED BRANCH CIRCUIT PANELBOARD, OVER 240 VOLTS, FLUSH MOUNTED BRANCH CIRCUIT PANELBOARD, UNDER 240 VOLTS, SURFACE MOUNTED BRANCH CIRCUIT PANELBOARD, UNDER 240 VOLTS, FLUSH MOUNTED CONDUIT CONCEALED ABOVE CEILING OR IN WALL CONDUIT EXPOSED CONDUIT CONCEALED IN SLAB, UNDERGROUND OR UNDER FLOOR CONDUIT TURNING UP TO ELECTRICAL PANEL CONDUIT TURNING UP CONDUIT TURNING DOWN CONDUIT STUBBED OUT OR UP CONDUIT CONTINUED FLEXIBLE CONDUIT CONDUIT SEAL-OFF FITTING GROUND OR GROUND ROD AS NOTED EXISTING TO BE REMOVED (HEAVY, DASHED LINE) EXISTING TO REMAIN (LIGHT, SOLID LINE) NEW (HEAVY, SOLID LINE)</p>											
<p><b>MANHOLE</b> PULLBOX HANDHOLE TRANSFORMER AUTOMATIC TRANSFER SWITCH NEMA RATING, NEMA 1 UNLESS OTHERWISE NOTED NON-FUSED DISCONNECT SWITCH, RATING AS NOTED AR = AMPERE RATING OF SWITCH 4X SS = NEMA 4X STAINLESS STEEL ENCLOSURE NEMA RATING, NEMA 1 UNLESS OTHERWISE NOTED FUSED DISCONNECT AF = AMPERE RATING OF FUSE AR = AMPERE RATING OF SWITCH 4X SS = NEMA 4X STAINLESS STEEL ENCLOSURE NEMA STARTER SIZE # OF POLES COMBINATION MAGNETIC MOTOR STARTER, SIZE AS NOTED, 3-POLE UNLESS OTHERWISE NOTED 4X SS = NEMA 4X STAINLESS STEEL ENCLOSURE NEMA STARTER SIZE SWITCHBOARD/ SWITCHGEAR DISTRIBUTION PANEL BRANCH CIRCUIT PANELBOARD, OVER 240 VOLTS, SURFACE MOUNTED BRANCH CIRCUIT PANELBOARD, OVER 240 VOLTS, FLUSH MOUNTED BRANCH CIRCUIT PANELBOARD, UNDER 240 VOLTS, SURFACE MOUNTED BRANCH CIRCUIT PANELBOARD, UNDER 240 VOLTS, FLUSH MOUNTED CONDUIT CONCEALED ABOVE CEILING OR IN WALL CONDUIT EXPOSED CONDUIT CONCEALED IN SLAB, UNDERGROUND OR UNDER FLOOR CONDUIT TURNING UP TO ELECTRICAL PANEL CONDUIT TURNING UP CONDUIT TURNING DOWN CONDUIT STUBBED OUT OR UP CONDUIT CONTINUED FLEXIBLE CONDUIT CONDUIT SEAL-OFF FITTING GROUND OR GROUND ROD AS NOTED EXISTING TO BE REMOVED (HEAVY, DASHED LINE) EXISTING TO REMAIN (LIGHT, SOLID LINE) NEW (HEAVY, SOLID LINE)</p>											
<p><b>MANHOLE</b> PULLBOX HANDHOLE TRANSFORMER AUTOMATIC TRANSFER SWITCH NEMA RATING, NEMA 1 UNLESS OTHERWISE NOTED NON-FUSED DISCONNECT SWITCH, RATING AS NOTED AR = AMPERE RATING OF SWITCH 4X SS = NEMA 4X STAINLESS STEEL ENCLOSURE NEMA RATING, NEMA 1 UNLESS OTHERWISE NOTED FUSED DISCONNECT AF = AMPERE RATING OF FUSE AR = AMPERE RATING OF SWITCH 4X SS = NEMA 4X STAINLESS STEEL ENCLOSURE NEMA STARTER SIZE # OF POLES COMBINATION MAGNETIC MOTOR STARTER, SIZE AS NOTED, 3-POLE UNLESS OTHERWISE NOTED 4X SS = NEMA 4X STAINLESS STEEL ENCLOSURE NEMA STARTER SIZE SWITCHBOARD/ SWITCHGEAR DISTRIBUTION PANEL BRANCH CIRCUIT PANELBOARD, OVER 240 VOLTS, SURFACE MOUNTED BRANCH CIRCUIT PANELBOARD, OVER 240 VOLTS, FLUSH MOUNTED BRANCH CIRCUIT PANELBOARD, UNDER 240 VOLTS, SURFACE MOUNTED BRANCH CIRCUIT PANELBOARD, UNDER 240 VOLTS, FLUSH MOUNTED CONDUIT CONCEALED ABOVE CEILING OR IN WALL CONDUIT EXPOSED CONDUIT CONCEALED IN SLAB, UNDERGROUND OR UNDER FLOOR CONDUIT TURNING UP TO ELECTRICAL PANEL CONDUIT TURNING UP CONDUIT TURNING DOWN CONDUIT STUBBED OUT OR UP CONDUIT CONTINUED FLEXIBLE CONDUIT CONDUIT SEAL-OFF FITTING GROUND OR GROUND ROD AS NOTED EXISTING TO BE REMOVED (HEAVY, DASHED LINE) EXISTING TO REMAIN (LIGHT, SOLID LINE) NEW (HEAVY, SOLID LINE)</p>											
<p><b>MANHOLE</b> PULLBOX HANDHOLE TRANSFORMER AUTOMATIC TRANSFER SWITCH NEMA RATING, NEMA 1 UNLESS OTHERWISE NOTED NON-FUSED DISCONNECT SWITCH, RATING AS NOTED AR = AMPERE RATING OF SWITCH 4X SS = NEMA 4X STAINLESS STEEL ENCLOSURE NEMA RATING, NEMA 1 UNLESS OTHERWISE NOTED FUSED DISCONNECT AF = AMPERE RATING OF FUSE AR = AMPERE RATING OF SWITCH 4X SS = NEMA 4X STAINLESS STEEL ENCLOSURE NEMA STARTER SIZE # OF POLES COMBINATION MAGNETIC MOTOR STARTER, SIZE AS NOTED, 3-POLE UNLESS OTHERWISE NOTED 4X SS = NEMA 4X STAINLESS STEEL ENCLOSURE NEMA STARTER SIZE SWITCHBOARD/ SWITCHGEAR DISTRIBUTION PANEL BRANCH CIRCUIT PANELBOARD, OVER 240 VOLTS, SURFACE MOUNTED BRANCH CIRCUIT PANELBOARD, OVER 240 VOLTS, FLUSH MOUNTED BRANCH CIRCUIT PANELBOARD, UNDER 240 VOLTS, SURFACE MOUNTED BRANCH CIRCUIT PANELBOARD, UNDER 240 VOLTS, FLUSH MOUNTED CONDUIT CONCEALED ABOVE CEILING OR IN WALL CONDUIT EXPOSED CONDUIT CONCEALED IN SLAB, UNDERGROUND OR UNDER FLOOR CONDUIT TURNING UP TO ELECTRICAL PANEL CONDUIT TURNING UP CONDUIT TURNING DOWN CONDUIT STUBBED OUT OR UP CONDUIT CONTINUED FLEXIBLE CONDUIT CONDUIT SEAL-OFF FITTING GROUND OR GROUND ROD AS NOTED EXISTING TO BE REMOVED (HEAVY, DASHED LINE) EXISTING TO REMAIN (LIGHT, SOLID LINE) NEW (HEAVY, SOLID LINE)</p>											
<p><b>MANHOLE</b> PULLBOX HANDHOLE TRANSFORMER AUTOMATIC TRANSFER SWITCH NEMA RATING, NEMA 1 UNLESS OTHERWISE NOTED NON-FUSED DISCONNECT SWITCH, RATING AS NOTED AR = AMPERE RATING OF SWITCH 4X SS = NEMA 4X STAINLESS STEEL ENCLOSURE NEMA RATING, NEMA 1 UNLESS OTHERWISE NOTED FUSED DISCONNECT AF = AMPERE RATING OF FUSE AR = AMPERE RATING OF SWITCH 4X SS = NEMA 4X STAINLESS STEEL ENCLOSURE NEMA STARTER SIZE # OF POLES COMBINATION MAGNETIC MOTOR STARTER, SIZE AS NOTED, 3-POLE UNLESS OTHERWISE NOTED 4X SS = NEMA 4X STAINLESS STEEL ENCLOSURE NEMA STARTER SIZE SWITCHBOARD/ SWITCHGEAR DISTRIBUTION PANEL BRANCH CIRCUIT PANELBOARD, OVER 240 VOLTS, SURFACE MOUNTED BRANCH CIRCUIT PANELBOARD, OVER 240 VOLTS, FLUSH MOUNTED BRANCH CIRCUIT PANELBOARD, UNDER 240 VOLTS, SURFACE MOUNTED BRANCH CIRCUIT PANELBOARD, UNDER 240 VOLTS, FLUSH MOUNTED CONDUIT CONCEALED ABOVE CEILING OR IN WALL CONDUIT EXPOSED CONDUIT CONCEALED IN SLAB, UNDERGROUND OR UNDER FLOOR CONDUIT TURNING UP TO ELECTRICAL PANEL CONDUIT TURNING UP CONDUIT TURNING DOWN CONDUIT STUBBED OUT OR UP CONDUIT CONTINUED FLEXIBLE CONDUIT CONDUIT SEAL-OFF FITTING GROUND OR GROUND ROD AS NOTED EXISTING TO BE REMOVED (HEAVY, DASHED LINE) </p>											





I hereby certify that this plan, specification or report was prepared by me or under my direct supervision and that I am a duly Licensed PROFESSIONAL ENGINEER under the laws of the State of ILLINOIS

Elec Name Date 12/2023

Table with columns: Description, Revisions (Date, Num)

Comm: 223018 / 923541 Date: 12/15/2023 Drawn: RCS Check: DPM North

GENERAL ELECTRICAL NOTES

Scale: 1/2" = 1'-0"

E0.002

ELECTRICAL DEMOLITION NOTES

- 1. DEVICES, LIGHT FIXTURES AND EQUIPMENT SHOWN IN DASHED LINE TYPE ARE EXISTING TO BE DEMOLISHED... 2. EXISTING EQUIPMENT, LIGHT FIXTURES, DEVICES SHOWN ARE BASED ON FIELD SURVEYS AND RECORD DRAWINGS... 3. WHERE EXISTING DEVICES ARE INDICATED TO REMAIN OR RELOCATED... 4. WHERE EXISTING DEVICES ARE TO REMAIN, CONTRACTOR MUST EXTEND EXISTING CIRCUITRY WHERE NECESSARY... 5. COORDINATE WITH THE OWNER FOR DISPOSITION OF ELECTRICAL ITEMS TO BE DEMOLISHED... 6. COORDINATE EXACT AREAS, WALLS, CEILING, ETC. TO BE DEMOLISHED WITH ARCHITECTURAL, STRUCTURAL, PLUMBING AND MECHANICAL DEMOLITION PLANS... 7. WHERE EXISTING DEVICES, LIGHT FIXTURES AND EQUIPMENT ARE INDICATED TO BE DEMOLISHED... 8. ALL AREAS OUTSIDE THE SCOPE OF CONSTRUCTION ARE TO REMAIN ENERGIZED... 9. REFER TO ARCHITECTURAL DEMOLITION DRAWINGS FOR EXTENT OF AREA REQUIRING DEMOLITION AND ADDITIONAL INFORMATION ON ELECTRICAL DEMOLITION WITH THAT AREA... 10. REMOVE ALL CONDUIT LEFT EXPOSED BY REMOVAL OF WALLS AND CEILING... 11. ELECTRICAL DEVICES CONCEALED BY STORAGE SHELVING, CASEWORK, FURNITURE, ETC. AND NOT NOTED ON THE DEMOLITION DRAWINGS ARE TO BE REMOVED AS REQUIRED, UNLESS SHOWN AS EXISTING TO REMAIN... 12. CONTRACTOR SHALL BE RESPONSIBLE FOR PATCHING ALL OPENINGS IN EXISTING CONSTRUCTION AFTER REMOVAL OF EQUIPMENT AND ELECTRICAL DEVICES... 13. PROVIDE BLANK COVERPLATES WHERE DEVICES ARE BEING REMOVED FROM EXISTING WALLS TO REMAIN... 14. FIELD VERIFY ALL EXISTING CONDITIONS AND DIMENSIONS PRIOR TO COMMENCEMENT OF WORK... 15. COORDINATE SERVICE INTERRUPTION WITH CONSTRUCTION MANAGER, OWNER, LANDLORD, AND UTILITY COMPANY... 16. EXERCISE EXTREME CAUTION WHEN REMOVING RELOCATING WIRING AND EQUIPMENT... 17. INFORMATION INDICATED IN THE DEMOLITION PORTION OF THE CONTRACT DRAWINGS IS DIAGRAMMATIC IN NATURE... 18. UPDATE ALL EXISTING ELECTRICAL EQUIPMENT NAMEPLATES AND DIRECTORIES AS NECESSARY... 19. STORE ITEMS INDICATED TO BE RETURNED TO THE OWNER IN A DRY, CLEAN AND PROTECTED AREA... 20. PROVIDE ANY NECESSARY REPROGRAMMING OF EXISTING BUILDING FIRE ALARM SYSTEMS... 21. THE DEMOLITION PLAN IS NOT INCLUSIVE OF ALL ELECTRICAL DEVICES WITHIN THE PROJECT AREA... 22. ALL CONDUITS SERVING OTHER SPACES THAT RUN THROUGH THE PROJECT AREA SHALL REMAIN ACTIVE DURING CONSTRUCTION... 23. REMOVE ALL ABANDONED WIRING AND CONDUIT THAT IS WITHIN THE PROJECT AREA PRIOR TO THE END OF CONSTRUCTION.

ELECTRICAL GENERAL NOTES

- 1. THE DRAWINGS AND APPLICABLE SPECIFICATIONS SHALL BE CONSIDERED SUPPLEMENTARY, ONE TO THE OTHER AND ARE CONSIDERED THE "CONTRACT DOCUMENTS"... 2. PROVIDE AN OPERATING AND MAINTENANCE MANUAL TO OWNER PRIOR TO THE FINAL ACCEPTANCE... 3. INCLUDE ALL COSTS FOR EXCAVATION, SAW CUTTING, DIRECTIONAL BORING, CORE DRILLING, BACKFILLING, SURFACE RESTORATION, REPAIR OF FINISHES, ETC... 4. INCLUDE IN BID THE TRANSPORT AND DISPOSAL OR RECYCLING OF ALL WASTE MATERIALS... 5. VERIFY AND COORDINATE LOCATIONS OF ANY MISCELLANEOUS EQUIPMENT... 6. COORDINATE RECEPTACLE LOCATIONS WITH TECHNOLOGY DRAWINGS OR OWNER'S VENDOR DRAWINGS... 7. REFER TO ARCHITECTURAL, MECHANICAL, PLUMBING, FIRE PROTECTION AND INTERIOR DESIGN DRAWINGS... 8. WHERE A DISCREPANCY OR CONFLICT IS FOUNDING BETWEEN ONE DRAWING AND ANOTHER... 9. CAREFULLY EXAMINE THOSE PORTIONS OF THE BUILDING AND/OR SITE AFFECTED BY THIS WORK... 10. COORDINATE ALL PROJECT SCHEDULING AND PHASING REQUIREMENTS WITH ARCHITECT/ENGINEER... 11. COORDINATE THE LOCATION OF ALL LIGHT FIXTURES, DEVICES AND BOXES WITH WINDOWS, MIRRORS, MILLWORK, CABINETS... 12. WORKING CLEARANCES FOR ELECTRICAL EQUIPMENT SHALL BE IN COMPLIANCE WITH NEC... 13. THE EXCLUSIVELY DEDICATED SPACE EXTENDING FROM FLOOR TO ABOVE EQUIPMENT OR STRUCTURAL CEILING... 14. PROVIDE HRCR RATED CIRCUIT BREAKER FOR ALL HVAC EQUIPMENT.

FIRE ALARM SYSTEM NOTES

- 1. ALL FIRE ALARM EQUIPMENT IS TO BE NEW, UL LISTED FOR FIRE SERVICE, AND SHALL BE COMPATIBLE WITH THE SYSTEM BEING USED... 2. ALL WIRING AND CONDUIT IS TO CONFORM TO NEC ARTICLE 760... 3. LOW VOLTAGE CONDUCTORS: PROVIDE CONDUCTORS IN ACCORDANCE WITH NFPA 70 AND NFPA 72... 4. SURVIVABILITY: A 1-HOUR RATED CABLE ASSEMBLY SHALL BE PROVIDED FOR NOTIFICATION APPLICABLE CIRCUITS... 5. MANUAL PULL STATIONS ARE TO BE INSTALLED AT 42" BOTTOM OF DEVICE AND NO HIGHER THAN 48" TO HANDLE ABOVE FINISHED FLOOR... 6. PROVIDE MINIMUM 3/4" CONDUIT AND WIRING BETWEEN EACH FIRE ALARM DEVICE AND FROM LAST DEVICE TO FAACP... 7. MINIMUM CANDELA RATING OF STROBES IS 75-110' ADJACENT TO DEVICE INDICATES 110 CANDELA RATING... 8. ALL STROBES SHALL BE INSTALLED PER ADA MOUNTING HEIGHT REQUIREMENTS... 9. STROBES SHALL BE INSTALLED WITHIN 10' OF THE ENDS OF ALL CORRIDORS... 10. NOTIFICATION DEVICES SHALL BE ADDRESSABLE ELECTRIC VIBRATING-POLARIZED HORNS... 11. STROBES SHALL BE INSTALLED PER ADA MOUNTING HEIGHT REQUIREMENTS... 12. PROVIDE PLENUM RATED, FREE-WIRED, UL APPROVED FIRE ALARM CABLE... 13. CONTRACTOR/VENDOR SHALL PREPARE LICENSED P.E. WORKING DRAWINGS... 14. THE INFRASTRUCTURE FOR THE ACCESS CONTROL (CCTV OR SECURITY ELECTRONICS) SYSTEM CONDUITS... 15. THE INFRASTRUCTURE FOR THE VOICEDATA TELECOMMUNICATIONS SYSTEM (CONDUITS, ELECTRICAL BOXES)... 16. PROVIDE 120V 20A 500R RECEPTACLE AT ALL FAN COIL UNITS FOR CONDENSATE PUMP POWER... 17. PROVIDE 120V DEDICATED CIRCUIT TO EACH AIR HANDLING UNIT WITH SEPARATE CONNECTIONS TO UNIT (N) LIGHT UNIT LIGHTS... 18. PROVIDE 120V DEDICATED CIRCUIT TO EACH AIR HANDLING UNIT WITH SEPARATE CONNECTIONS TO UNIT (N) LIGHT UNIT LIGHTS.

ELECTRICAL GENERAL NOTES

- 1. LIGHT SWITCHES SHALL BE MOUNTED 48 INCHES ABOVE FINISHED FLOOR TO CENTER LINE OF DEVICE... 2. RECEPTABLES, VOICEDATA OUTLETS, WALL FURNITURE FEEDS SHALL BE MOUNTED 18 INCHES ABOVE FINISHED FLOOR... 3. WHEN ELECTRICAL BOXES ARE LOCATED IN VERTICAL FIRE-RESISTIVE ASSEMBLIES... 4. ALL CLEARANCES BETWEEN OUTLET BOX AND OYSIMUM BOARD SHALL BE COMPLETELY FILLED WITH JOINT COMPOUND... 5. VERIFY AND COORDINATE LOCATIONS OF ANY MISCELLANEOUS EQUIPMENT... 6. COORDINATE RECEPTACLE LOCATIONS WITH TECHNOLOGY DRAWINGS... 7. REFER TO ARCHITECTURAL, MECHANICAL, PLUMBING, FIRE PROTECTION AND INTERIOR DESIGN DRAWINGS... 8. WHERE A DISCREPANCY OR CONFLICT IS FOUNDING BETWEEN ONE DRAWING AND ANOTHER... 9. CAREFULLY EXAMINE THOSE PORTIONS OF THE BUILDING AND/OR SITE AFFECTED BY THIS WORK... 10. COORDINATE ALL PROJECT SCHEDULING AND PHASING REQUIREMENTS WITH ARCHITECT/ENGINEER... 11. COORDINATE THE LOCATION OF ALL LIGHT FIXTURES, DEVICES AND BOXES WITH WINDOWS, MIRRORS, MILLWORK, CABINETS... 12. WORKING CLEARANCES FOR ELECTRICAL EQUIPMENT SHALL BE IN COMPLIANCE WITH NEC... 13. THE EXCLUSIVELY DEDICATED SPACE EXTENDING FROM FLOOR TO ABOVE EQUIPMENT OR STRUCTURAL CEILING... 14. PROVIDE HRCR RATED CIRCUIT BREAKER FOR ALL HVAC EQUIPMENT.

- 1. FLEXIBLE METAL CONDUIT AND LIQUIDTIGHT METAL CONDUIT (LMC & LFMC) SHALL NOT BE USED IN LENGTHS THAT EXCEED 6'-0" UNLESS SPECIFICALLY NOTED OTHERWISE... 2. ALL FEEDER AND BRANCH CIRCUIT CONDUCTORS, INCLUDING LOW VOLTAGE SYSTEMS... 3. THE USE OF ELECTRICAL NON-METALLIC TUBING (ENT) AND LIQUIDTIGHT FLEXIBLE NON-METALLIC CONDUIT (LFMC) ARE PROHIBITED... 4. CONNECTIONS TO TRANSFORMERS, AHUS, AND PUMPS SHALL BE WITH LIQUIDTIGHT, FLEXIBLE METAL CONDUIT... 5. NO PVC CONDUIT MAY BE USED INSIDE OF BUILDING UNLESS ROUTED UNDERGROUND... 6. ALL CONDUIT TERMINATIONS AT TERMINAL BOARDS ARE TO HAVE GROUNDING BUSBARS AT CONDUIT ENDS... 7. ALL CONDUITS ARE TO BE CONCEALED UNLESS IMPOSSIBLE DUE TO EXISTING CONDITIONS... 8. SEAL ALL PENETRATIONS AND OPENINGS MADE DURING EXECUTION OF WORK... 9. PANEL SCHEDULES AND FLOOR PLANS MAY INDICATE DEDICATED HOMERUNS FOR EACH BRANCH CIRCUIT... 10. IT IS THE INTENT THAT ALL RACEWAYS BE CONCEALED IN WALLS ABOVE CEILING... 11. PROVIDE POLYOLEFIN ET-LEAD #32 (N) (N) (N) FULL STRING IN EACH EMPTY CONDUIT... 12. MINIMUM RACEWAY SIZE SHALL BE 3/4" UNLESS NOTED OTHERWISE... 13. SET SCREW TYPE FITTINGS ARE ALLOWED FOR EMT CONDUIT.

MISCELLANEOUS CIRCUIT INSTALLATION REQUIREMENTS:

- 1. THE INFRASTRUCTURE FOR THE ACCESS CONTROL (CCTV OR SECURITY ELECTRONICS) SYSTEM CONDUITS... 2. THE INFRASTRUCTURE FOR THE VOICEDATA TELECOMMUNICATIONS SYSTEM (CONDUITS, ELECTRICAL BOXES)... 3. PROVIDE 120V 20A 500R RECEPTACLE AT ALL FAN COIL UNITS FOR CONDENSATE PUMP POWER... 4. PROVIDE 120V CONNECTION TO ALL MOTORORIZED DAMPERS INDICATED ON MECHANICAL PLANS... 5. PROVIDE PHONE/DATA OUTLET WITH 1" RACEWAY... 6. PROVIDE 120V DEDICATED CIRCUIT TO EACH AIR HANDLING UNIT WITH SEPARATE CONNECTIONS TO UNIT (N) LIGHT UNIT LIGHTS... 7. PROVIDE 120V DEDICATED CIRCUIT TO EACH AIR HANDLING UNIT WITH SEPARATE CONNECTIONS TO UNIT (N) LIGHT UNIT LIGHTS.

ELECTRICAL GENERAL NOTES

- 1. THE DRAWINGS AND APPLICABLE SPECIFICATIONS SHALL BE CONSIDERED SUPPLEMENTARY, ONE TO THE OTHER AND ARE CONSIDERED THE "CONTRACT DOCUMENTS"... 2. PROVIDE AN OPERATING AND MAINTENANCE MANUAL TO OWNER PRIOR TO THE FINAL ACCEPTANCE... 3. INCLUDE ALL COSTS FOR EXCAVATION, SAW CUTTING, DIRECTIONAL BORING, CORE DRILLING, BACKFILLING, SURFACE RESTORATION, REPAIR OF FINISHES, ETC... 4. INCLUDE IN BID THE TRANSPORT AND DISPOSAL OR RECYCLING OF ALL WASTE MATERIALS... 5. VERIFY AND COORDINATE LOCATIONS OF ANY MISCELLANEOUS EQUIPMENT... 6. COORDINATE RECEPTACLE LOCATIONS WITH TECHNOLOGY DRAWINGS OR OWNER'S VENDOR DRAWINGS... 7. REFER TO ARCHITECTURAL, MECHANICAL, PLUMBING, FIRE PROTECTION AND INTERIOR DESIGN DRAWINGS... 8. WHERE A DISCREPANCY OR CONFLICT IS FOUNDING BETWEEN ONE DRAWING AND ANOTHER... 9. CAREFULLY EXAMINE THOSE PORTIONS OF THE BUILDING AND/OR SITE AFFECTED BY THIS WORK... 10. COORDINATE ALL PROJECT SCHEDULING AND PHASING REQUIREMENTS WITH ARCHITECT/ENGINEER... 11. COORDINATE THE LOCATION OF ALL LIGHT FIXTURES, DEVICES AND BOXES WITH WINDOWS, MIRRORS, MILLWORK, CABINETS... 12. WORKING CLEARANCES FOR ELECTRICAL EQUIPMENT SHALL BE IN COMPLIANCE WITH NEC... 13. THE EXCLUSIVELY DEDICATED SPACE EXTENDING FROM FLOOR TO ABOVE EQUIPMENT OR STRUCTURAL CEILING... 14. PROVIDE HRCR RATED CIRCUIT BREAKER FOR ALL HVAC EQUIPMENT.

MISCELLANEOUS CIRCUIT INSTALLATION REQUIREMENTS:

- 1. THE INFRASTRUCTURE FOR THE ACCESS CONTROL (CCTV OR SECURITY ELECTRONICS) SYSTEM CONDUITS... 2. THE INFRASTRUCTURE FOR THE VOICEDATA TELECOMMUNICATIONS SYSTEM (CONDUITS, ELECTRICAL BOXES)... 3. PROVIDE 120V 20A 500R RECEPTACLE AT ALL FAN COIL UNITS FOR CONDENSATE PUMP POWER... 4. PROVIDE 120V CONNECTION TO ALL MOTORORIZED DAMPERS INDICATED ON MECHANICAL PLANS... 5. PROVIDE PHONE/DATA OUTLET WITH 1" RACEWAY... 6. PROVIDE 120V DEDICATED CIRCUIT TO EACH AIR HANDLING UNIT WITH SEPARATE CONNECTIONS TO UNIT (N) LIGHT UNIT LIGHTS... 7. PROVIDE 120V DEDICATED CIRCUIT TO EACH AIR HANDLING UNIT WITH SEPARATE CONNECTIONS TO UNIT (N) LIGHT UNIT LIGHTS.

MISCELLANEOUS CIRCUIT INSTALLATION REQUIREMENTS:

- 1. THE INFRASTRUCTURE FOR THE ACCESS CONTROL (CCTV OR SECURITY ELECTRONICS) SYSTEM CONDUITS... 2. THE INFRASTRUCTURE FOR THE VOICEDATA TELECOMMUNICATIONS SYSTEM (CONDUITS, ELECTRICAL BOXES)... 3. PROVIDE 120V 20A 500R RECEPTACLE AT ALL FAN COIL UNITS FOR CONDENSATE PUMP POWER... 4. PROVIDE 120V CONNECTION TO ALL MOTORORIZED DAMPERS INDICATED ON MECHANICAL PLANS... 5. PROVIDE PHONE/DATA OUTLET WITH 1" RACEWAY... 6. PROVIDE 120V DEDICATED CIRCUIT TO EACH AIR HANDLING UNIT WITH SEPARATE CONNECTIONS TO UNIT (N) LIGHT UNIT LIGHTS... 7. PROVIDE 120V DEDICATED CIRCUIT TO EACH AIR HANDLING UNIT WITH SEPARATE CONNECTIONS TO UNIT (N) LIGHT UNIT LIGHTS.

MISCELLANEOUS CIRCUIT INSTALLATION REQUIREMENTS:

- 1. THE INFRASTRUCTURE FOR THE ACCESS CONTROL (CCTV OR SECURITY ELECTRONICS) SYSTEM CONDUITS... 2. THE INFRASTRUCTURE FOR THE VOICEDATA TELECOMMUNICATIONS SYSTEM (CONDUITS, ELECTRICAL BOXES)... 3. PROVIDE 120V 20A 500R RECEPTACLE AT ALL FAN COIL UNITS FOR CONDENSATE PUMP POWER... 4. PROVIDE 120V CONNECTION TO ALL MOTORORIZED DAMPERS INDICATED ON MECHANICAL PLANS... 5. PROVIDE PHONE/DATA OUTLET WITH 1" RACEWAY... 6. PROVIDE 120V DEDICATED CIRCUIT TO EACH AIR HANDLING UNIT WITH SEPARATE CONNECTIONS TO UNIT (N) LIGHT UNIT LIGHTS... 7. PROVIDE 120V DEDICATED CIRCUIT TO EACH AIR HANDLING UNIT WITH SEPARATE CONNECTIONS TO UNIT (N) LIGHT UNIT LIGHTS.



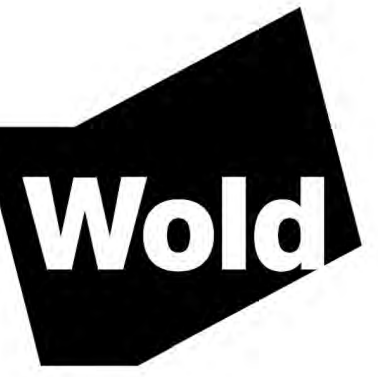




**HIDDEN LAKES  
EQUIPMENT SHED  
REPLACEMENT**

Downers Grove, Illinois 60515

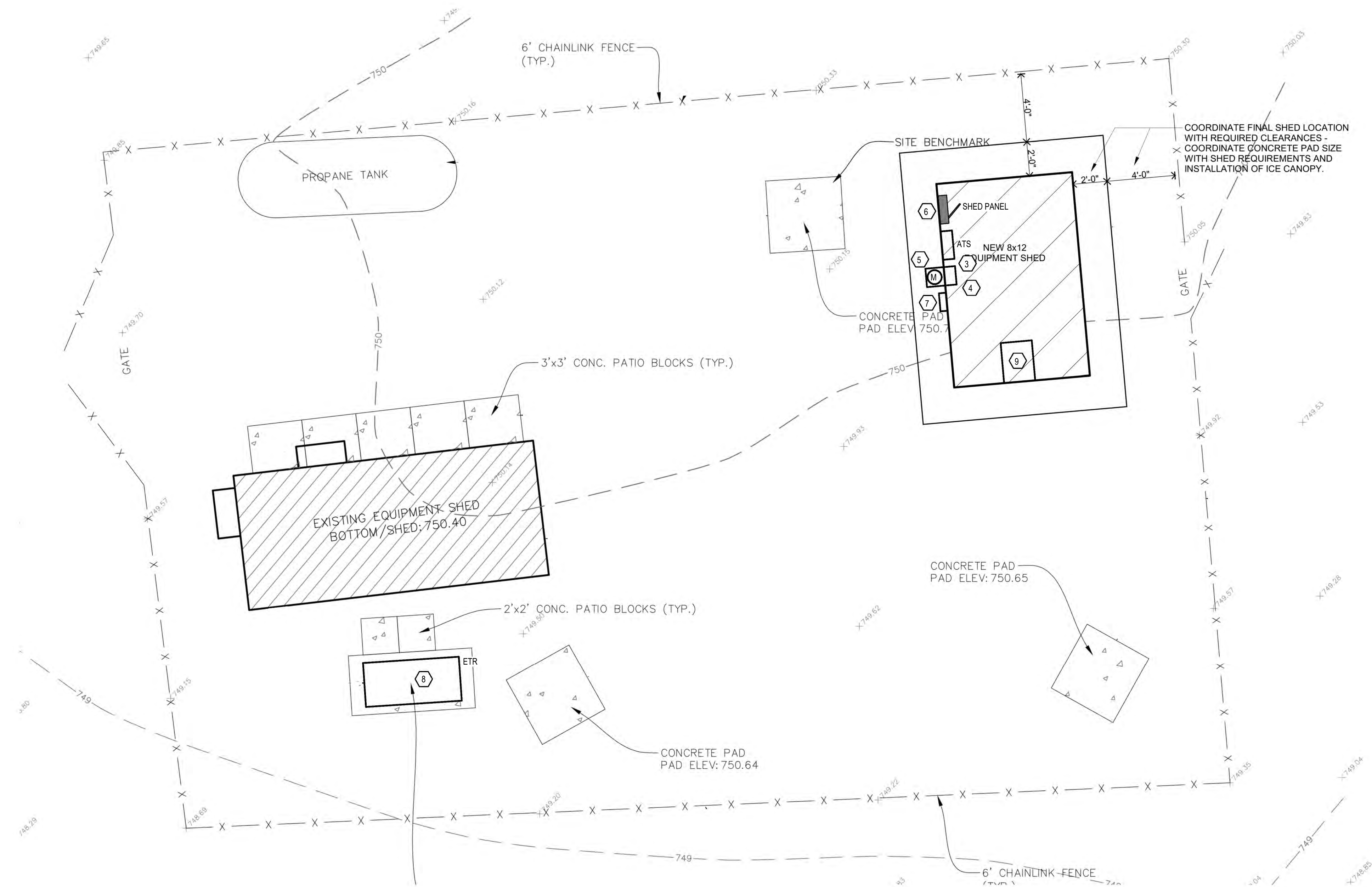
**DuPage County**  
421 N County Farm Road  
Wheaton, Illinois



**WOLD ARCHITECTS  
AND ENGINEERS**  
220 North Smith Street, Suite 310  
Palatine, Illinois 60067

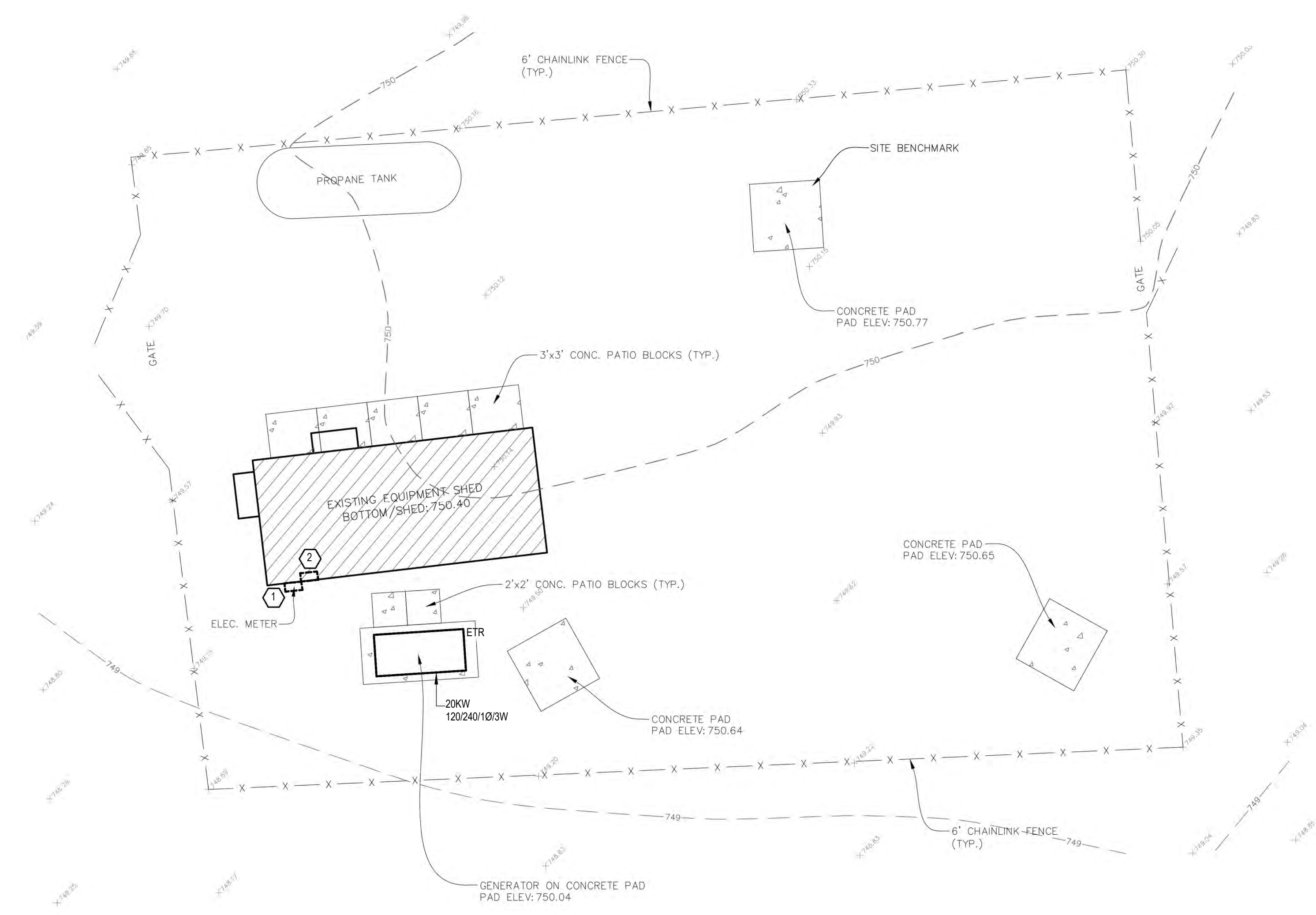
woldac.com | 847 241 6100

**TLC ENGINEERING  
SOLUTIONS**  
1301 W. 22nd St. Suite 210  
Oak Brook, IL 60523  
P: 630-472-2018  
www.tlc-engineers.com  
TLC No. 6246-526-3  
www.tlc-engineers.com  
TLC No. 6246-526-3  
THINK. LISTEN. CREATE.



**1 EQUIPMENT SHED POWER PLAN**  
1/4" = 1'-0"

KEY NOTES	
1.	AFTER THE NEW SHED IS OPERATIONAL AND ALL EQUIPMENT HAS BEEN REMOVED FROM THE EXISTING SHED, DEMOLISH THE EXISTING METER SOCKET AND FEEDER. SEE THE ONE LINE DIAGRAM - DEMO.
2.	AFTER THE NEW SHED IS OPERATIONAL AND ALL EQUIPMENT HAS BEEN REMOVED FROM THE EXISTING SHED, DEMOLISH THE EXISTING TRANSFER SWITCH, BYPASS CABINET AND ASSOCIATED FEEDER TO THE GENERATOR. SEE THE ONE LINE DIAGRAM - DEMO.
3.	PROVIDE A NEW 100A, 2P, 240V AUTOMATIC TRANSFER SWITCH AND ALL ENGINE START WIRING TO THE GENERATOR.
4.	PROVIDE A NEW SERVICE ENTRANCE RATED 1002 CIRCUIT BREAKER IN NEMA 1 ENCLOSURE.
5.	PROVIDE A NEW COMED APPROVED 100A METER SOCKET.
6.	FEED THE SHED PANEL, PER THE ONE LINE DIAGRAM - NEW. THE SHED PANEL IS FURNISHED AND INSTALLED BY THE SHED MANUFACTURER AND WIRED BY THE ELECTRICIAN.
7.	PROVIDE A GROUND BAR. SEE THE GROUNDING ONE LINE DIAGRAM.
8.	CONNECT THE (2) CIRCUITS FOR THE BLOCK HEATER AND BATTERY CHARGER TO SPARE 20'1 BREAKERS IN THE NEW SHED PANEL. DEMO THE EXISTING CIRCUITS TO THE SHED PANEL BEING DEMOLISHED.
9.	????? RACK POWER ?????



**2 EQUIPMENT SHED DEMOLITION PLAN**  
1/4" = 1'-0"

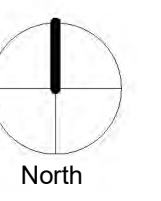


I hereby certify that this plan, specification or report was prepared by me or under my direct supervision and that I am a duly Licensed PROFESSIONAL ENGINEER under the laws of the State of ILLINOIS

License Number: **Elec Num** Date: **12/2023**

Description	Revisions	
	Date	Num

Comm: 223018 / 923541  
Date: 12/15/2023  
Drawn: RCS  
Check: DPM



**EQUIPMENT SHED  
POWER PLANS**

Scale: As Indicated

**E1.101**

**99% DESIGN DEVELOPMENT**

IL

E

