

COUNTY	TOTAL SHEETS	SHEET NO.
DUPAGE	21	1
PROJECT NO. 211350		

DUPAGE COUNTY CAMPUS STORMWATER POND IMPROVEMENTS FINAL ENGINEERING PLANS

INDEX OF SHEETS

- 1 TITLE SHEET
- 2 GENERAL NOTES
- 3 EXISTING CONDITIONS - EAST FAIRGROUNDS POND
- 4 REMOVAL PLAN - EAST FAIRGROUNDS POND
- 5-6 GRADING PLAN - EAST FAIRGROUNDS POND
- 7 UTILITY PLAN - EAST FAIRGROUNDS POND
- 8 PAVING PLAN - EAST FAIRGROUNDS POND
- 9 EROSION CONTROL PLAN - EAST FAIRGROUNDS POND
- 10-11 PLANTING PLAN - EAST FAIRGROUNDS POND
- 12 REFERENCE: BATHYMETRIC SURVEY BY OTHERS - EAST FAIRGROUNDS POND
- 13 REFERENCE: 2001 PLAN (BY OTHERS) REFERENCE - EAST FAIRGROUNDS POND
- 14 SWPPP AND EROSION CONTROL NOTES
- 15-16 EROSION CONTROL DETAILS
- 17-21 CONSTRUCTION DETAILS

CITY OF WHEATON
DUPAGE COUNTY, ILLINOIS

OWNER:

DUPAGE COUNTY FACILITIES
421 COUNTY FARM RD
WHEATON, IL 60187

CONTACT:

GEOFFREY MATTESON
DUPAGE COUNTY FACILITIES MANAGEMENT
630-407-5681

BENCHMARKS

- SOURCE: 2006 GEODETIC SURVEY MONUMENT
- STATION DESIGNATION: BENCHMARK 0001
ESTABLISHED BY: DUPAGE COUNTY
DATE: JANUARY 2006
PID: DK3249
- ELEVATION: 727.89
DATUM: NAVD 88
- SOURCE: 2006 GEODETIC SURVEY MONUMENT
- STATION DESIGNATION: BENCHMARK 0002
ESTABLISHED BY: DUPAGE COUNTY
DATE: JANUARY 2006
PID: DK3250
- ELEVATION: 726.06
DATUM: NAVD 88

LEGEND

PR STORM SEWER

PR STORM SEWER (BY OTHERS)

PR MAJOR CONTOURS

PR MINOR CONTOURS

PR NWL / HWL

PR TRENCH BOX

PR DRAINAGE STRUCTURE (CLOSED LID / OPEN LID)

PR DRAINAGE STRUCTURE, BY OTHERS (CLOSED LID / OPEN LID)

PR FLARED END SECTION

PR SIGN PANEL

EX STORM SEWER

EX MAJOR CONTOURS

EX MINOR CONTOURS

EX SANITARY SEWER

EX WATER SERVICE LINE

EX UNDERGROUND ELECTRIC

EX UNDERGROUND GAS

EX UNDERGROUND TELEPHONE

EX OVERHEAD ELECTRIC

EX PROPERTY BOUNDARY

EX EDGE OF WATER

EX FENCE LINE

EX DRAINAGE STRUCTURE

EX FLARED END SECTION

EX DECIDUOUS TREE

EX EVERGREEN TREE

EX STUMP

EX FIRE HYDRANT

EX HANDHOLE

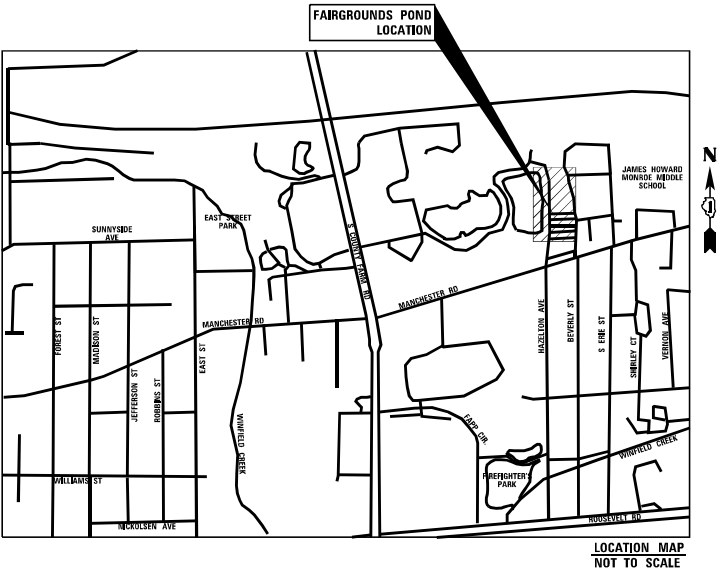
EX POWER POLE

EX COMMUNICATION BOX

EX COMMUNICATION STRUCTURE

EX WATER VALVE

EX LIGHT POLE



FULL SIZE PLANS HAVE BEEN PREPARED USING STANDARD
ENGINEERING SCALES. REDUCED SIZED PLANS WILL NOT
CONFORM TO STANDARD SCALES.

PROFESSIONAL ENGINEER'S SIGN AND SEAL

JENNIFER AL H. MAERCKLEIN, P.E.
#062-055729
EXP. DATE:

J.U.L.I.E.
JOINT UTILITY LOCATION INFORMATION FOR EXCAVATION
1-800-892-0123
OR 811

V3 Companies

7325 James Avenue

Woodridge, IL 60517

630.724.9209 Phone

630.724.9202 Fax

www.v3co.com

- DRAWING DATE: 04-10-2023
- REVISIONS:
1. 4-14-2023 (PER DUPAGE COUNTY COMMENTS)

2. 4-18-2023 (PER DUPAGE COUNTY COMMENTS AND RECEIPT OF SURVEY)

3. 5-2-2023 (REMOVE SPOIL PILE)

UTILITY CONTACT INFO

TELEPHONE

AT&T
MR. STEVEN PESOLA
1000 COMMERCE DRIVE
OAK BROOK, IL 60523
(630) 573-5703

WATER AND SEWER

ILLINOIS AMERICAN WATER
MR. CHARLES SCHAEFER
(618) 239-3273

GAS

NICOR
MR. CHARLES M. PARROTT
1844 FERRY ROAD
NAPERVILLE, IL 60563
(630) 388-3319

GENERAL NOTES

- ALL EXISTING TOPOGRAPHY, UNDERGROUND UTILITIES, STRUCTURES AND ASSOCIATED FACILITIES SHOWN ON THESE DRAWINGS HAVE BEEN PLOTTED FROM AVAILABLE SURVEYS AND RECORDS. THEREFORE, THEIR LOCATIONS AND ELEVATIONS MUST BE CONSIDERED APPROXIMATE ONLY. THERE MAY BE OTHER FACILITIES, THE EXISTENCE OF WHICH ARE NOT PRESENTLY KNOWN. THE EXACT LOCATIONS AND ELEVATIONS ARE TO BE VERIFIED BY THE CONTRACTOR.
- BEFORE STARTING ANY EXCAVATION, THE CONTRACTOR SHALL CALL "JULIE" FOR FIELD LOCATIONS OF BURIED UTILITIES 48 HOURS IN ADVANCE OF WORK.
- IT SHALL BE THE CONTRACTOR'S RESPONSIBILITY TO FIELD CHECK ALL DIMENSIONS AND ELEVATIONS OF EXISTING UTILITY LINES AND STRUCTURES THAT MAY BE IMPACTED BY THE PROPOSED WORK PRIOR TO ORDERING MATERIAL OR BEGINNING CONSTRUCTION. ANY DISCREPANCIES FROM THE PLANS SHALL BE REPORTED TO THE ENGINEER IMMEDIATELY.
- ANY DAMAGE TO EXISTING UTILITIES SHALL BE REPAIRED BY THE UTILITY COMPANY AT THE CONTRACTOR'S EXPENSE.
- THE CONTRACTOR SHALL USE ALL NECESSARY PRECAUTIONARY AND PROTECTIVE MEASURES REQUIRED TO MAINTAIN AND PROTECT EXISTING UTILITIES, SEWERS, MAINS AND APPURTENANCES THAT MUST BE KEPT IN OPERATION. IN PARTICULAR, THE CONTRACTOR SHALL TAKE ADEQUATE MEASURES TO PREVENT THE UNDERMINING OF UTILITIES, SEWERS AND MAINS WHICH WILL REMAIN IN SERVICE. THE CONTRACTOR SHALL COORDINATE WITH THE ENGINEER AND UTILITY COMPANY IF IT IS DETERMINED THAT TEMPORARY BRACING OR SUPPORT OF THE UTILITIES IS REQUIRED, THE PROTECTION AND/OR TEMPORARY BRACING OR SUPPORT OF UTILITIES WILL NOT BE PAID FOR SEPARATELY BUT SHALL BE CONSIDERED AS INCLUDED IN THE UNIT BID PRICES OF THE CONTRACT AND NO ADDITIONAL COMPENSATION WILL BE ALLOWED.
- THE CONTRACTOR WILL NOT BE PERMITTED TO SET UP A YARD OR FIELD OFFICE ON COUNTY, CITY, TOWNSHIP, OR PRIVATE PROPERTY WITHOUT PRIOR WRITTEN PERMISSION.
- WHERE SECTION OR SUBSECTION MONUMENTS ARE ENCOUNTERED, THE ENGINEER SHALL BE NOTIFIED BEFORE SUCH MONUMENTS ARE DISTURBED. THE CONTRACTOR SHALL CAREFULLY PRESERVE ALL PROPERTY MARKERS AND MONUMENTS UNTIL THE OWNER, AN AUTHORIZED SURVEYOR OR AGENT HAS WITNESSED OR OTHERWISE REFERENCED EACH LOCATION.
- ALL APPLICABLE PROVISIONS OF THE CURRENT OCCUPATIONAL SAFETY AND HEALTH ACT ARE HEREIN INCORPORATED BY REFERENCE.
- EXCEPT WHERE MODIFIED BY THE CONTRACT DOCUMENTS, ALL WORK PROPOSED HEREON SHALL BE IN ACCORDANCE WITH THE FOLLOWING SPECIFICATIONS WHICH ARE HEREBY MADE A PART HEREOF:
 - "STANDARD SPECIFICATIONS FOR ROAD AND BRIDGE CONSTRUCTION IN ILLINOIS," AS PREPARED BY IDOT, LATEST EDITION.
 - "SUPPLEMENTAL SPECIFICATIONS AND RECURRING SPECIAL PROVISIONS," AS PREPARED BY IDOT, LATEST EDITION.
 - THE ILLINOIS ACCESSIBILITY CODE.
 - "MANUAL ON UNIFORM TRAFFIC CONTROL DEVICES FOR STREETS AND HIGHWAYS," LATEST EDITION.
 - "STANDARD SPECIFICATIONS FOR WATER AND SEWER MAIN CONSTRUCTION IN ILLINOIS AS PUBLISHED BY THE IEPA," LATEST EDITION.
 - ILLINOIS RECOMMENDED STANDARDS FOR SEWAGE WORKS," AS PUBLISHED BY THE IEPA, LATEST EDITION.
 - "MANUAL OF TEST PROCEDURES FOR MATERIALS," LATEST EDITION
 - "ILLINOIS URBAN MANUAL," LATEST EDITION
 - THE NATIONAL ELECTRIC CODE, LATEST EDITION.
- THE ENGINEER AND DUPAGE COUNTY ARE NOT RESPONSIBLE FOR THE CONSTRUCTION MEANS, METHODS, TECHNIQUES, SEQUENCES OR PROCEDURES, TIME OF PERFORMANCE, PROGRAMS OR ANY SAFETY PRECAUTIONS USED BY THE CONTRACTOR, THE CONTRACTOR IS SOLELY RESPONSIBLE FOR EXECUTION OF HIS/HER WORK IN ACCORDANCE WITH THE CONTRACT DOCUMENTS AND SPECIFICATIONS.

11. THE CONTRACTOR IS RESPONSIBLE FOR HAVING A SET OF "APPROVED" ENGINEERING PLANS WITH THE LATEST REVISION DATE ON THE JOB SITE PRIOR TO THE START OF CONSTRUCTION AND AT ALL TIMES DURING CONSTRUCTION.

12. AREAS OUTSIDE THE R.O.W. LINE OR CONSTRUCTION LIMIT LINE IMPACTED BY OPERATIONS OF THE CONTRACTOR SHALL BE RETURNED TO THE STATE IT WAS FOUND PRIOR TO NEW CONSTRUCTION, EXCEPT WHERE NEW WORK IS SHOWN.

13. CONTRACTOR SHALL MAINTAIN ACCESS TO ALL PROPERTIES AND SIDE ROADS DURING CONSTRUCTION OPERATIONS.

14. CONSTRUCTION ACTIVITY IS ALLOWED SEVEN DAYS A WEEK, FROM 7:00 AM TO SUNSET. NOISE FROM CONSTRUCTION AND DEMOLITION ACTIVITY IS UNRESTRICTED, FROM SUNSET TO 7:00 AM. NOISE IS LIMITED TO 50 DECIBELS, SIMILAR TO A NORMAL CONVERSATION.

REMOVALS, GRADING, AND PAVING NOTES

- ALL EXISTING PAVEMENT TO BE REMOVED SHALL BE SAWCUT ALONG LIMITS OF PROPOSED REMOVAL BEFORE COMMENCEMENT OF PAVEMENT REMOVAL. THE COST OF THE SAW CUT SHALL BE INCLUDED IN THE COST OF ITEM BEING REMOVED.
- NO HOLES ARE TO BE LEFT OPEN IN THE PAVEMENT OR PARKWAY OVER A HOLIDAY, WEEKEND OR AFTER 3:00 P.M. ON THE DAY PRECEDING A HOLIDAY OR A WEEKEND.
- STREET PAVING AND CURBS TO REMAIN SHALL BE PROTECTED FROM DAMAGE. IF DAMAGED, IT SHALL BE REPLACED PROMPTLY IN CONFORMANCE WITH THE MUNICIPALITY OR IDOT STANDARD SPECIFICATIONS IN MATERIALS AND WORKMANSHIP AND AT THE CONTRACTOR'S EXPENSE.
- ASPHALT JOINTS FOR BINDER COURSES ARE TO BE STAGGERED.
- PROPOSED ELEVATIONS INDICATE FINISHED CONDITIONS. FOR ROUGH GRADING ELEVATIONS ALLOW FOR THICKNESS OF PROPOSED PAVING (ROADS, WALKS, DRIVES, ETC.) OR TOPSOIL AS INDICATED ON DRAWINGS.
- EARTH EXCAVATION MATERIAL MOVED MORE THAN ONCE, AND STOCKPILED FOR USE AT A LATER TIME, SHALL NOT BE PAID FOR A SECOND TIME, UNLESS APPROVED BY THE ENGINEER.
- EXCAVATED TOPSOIL MAY BE STRIPPED TO A STOCKPILE, AND PAID FOR A SECOND TIME TO RESPREAD THE TOPSOIL FROM THE STOCKPILE TO FINISHED GRADE, IT SHALL NOT BE PAID FOR A THIRD TIME, UNLESS APPROVED BY THE ENGINEER.

DRAINAGE NOTES

- ALL FIELD TILE ENCOUNTERED DURING CONSTRUCTION OPERATIONS SHALL BE CONNECTED TO THE PROPOSED STORM SEWER OR EXTENDED TO OUTLET INTO A PROPOSED DRAINAGE WAY AS DETERMINED BY THE ENGINEER. IF THIS CANNOT BE ACCOMPLISHED, THEN IT SHALL BE REPAIRED WITH NEW PIPE OF SIMILAR SIZE AND MATERIAL TO THE ORIGINAL LINE AND PUT IN ACCEPTABLE OPERATIONAL CONDITION. A RECORD OF THE LOCATION OF ALL FIELD TILE FOR ON-SITE DRAIN PIPE ENCOUNTERED SHALL BE KEPT BY THE CONTRACTOR AND SUBMITTED TO THE ENGINEER UPON COMPLETION OF THE PROJECT. ALL FIELD TILE REPAIRS MUST MEET THE ILLINOIS URBAN MANUAL SPEC 945. THE COST OF THIS WORK SHALL BE CONSIDERED AS INCIDENTAL TO THE CONTRACT AND NO ADDITIONAL COMPENSATION WILL BE PROVIDED.
- WHEN AN EXISTING DRAINAGE ROUTE, EITHER A STORM SEWER OR WATERWAY, IS INTERRUPTED DUE TO THE SEWER INSTALLATION, THE DRAINAGE ROUTE SHALL BE RE-ESTABLISHED TO ORIGINAL CONDITIONS BY THE END OF THE SAME WORK DAY. POSITIVE DRAINAGE MUST BE MAINTAINED AT ALL TIMES DURING CONSTRUCTION.
- DURING CONSTRUCTION, THE CONTRACTOR SHALL MAINTAIN ALL SURFACE DRAINAGE WITHIN THE PROJECT LIMITS. ALL STORM FLOW MUST BE MAINTAINED AT ALL TIMES, UNLESS OTHERWISE DIRECTED BY ENGINEER.
- WHENEVER, DURING CONSTRUCTION OPERATIONS, LOOSE MATERIAL IS DEPOSITED IN THE FLOW LINE OF GUTTERS, DRAINAGE STRUCTURES, DITCHES ETC., SUCH THAT THE NATURAL FLOW LINE OF WATER IS OBSTRUCTED, THE LOOSE MATERIAL SHALL BE REMOVED AT THE CLOSE OF EACH WORKING DAY. AT THE CONCLUSION OF THE CONSTRUCTION OPERATION, ALL DRAINAGE STRUCTURES AND FLOW LINES SHALL BE FREE FROM DIRT AND DEBRIS. THIS WORK SHALL BE INCLUDED IN THE COST OF THE CONTRACT. THE CONTRACTOR'S FAILURE TO PROVIDE THE ABOVE WILL PRECLUDE ANY POSSIBLE ADDED COMPENSATION REQUESTED DUE TO DELAYS OR UNSUITABLE MATERIAL CREATED AS A RESULT THEREOF.
- ANY EXISTING DRAINAGE FACILITIES DISTURBED OR DAMAGED DURING CONSTRUCTION SHALL BE REPAIRED OR REPLACED BY THE CONTRACTOR AT THEIR EXPENSE. THIS WORK SHALL BE PERFORMED TO THE SATISFACTION OF THE ENGINEER.
- OFFSETS AND TOP OF FRAME OR LID ELEVATIONS FOR STRUCTURES LOCATED IN THE GUTTER ARE GIVEN AT THE EDGE OF PAVEMENT.
- TOP OF FRAME ("RIM") ELEVATIONS GIVEN ON THE PLANS ARE ONLY TO ASSIST THE CONTRACTOR IN DETERMINING THE APPROXIMATE OVERALL HEIGHT OF EACH STRUCTURE. FRAMES ON ALL NEW STRUCTURES SHALL BE ADJUSTED TO THE FINAL ELEVATIONS OF THE AREAS IN WHICH THEY ARE LOCATED, AS PART OF THE STRUCTURE COST.
- EXISTING MANHOLE / CATCH BASIN RIMS SHALL BE ADJUSTED AS NOTED.
- UNLESS OTHERWISE INDICATED ON THE PLANS, STORM SEWER PIPE SHALL BE REINFORCED CONCRETE PIPE IN CONFORMANCE WITH IDOT STANDARD SPECIFICATIONS DETERMINATION FOR PIPE CLASS, AND CONFORMING TO ASTM C76. ALL STORM SEWER SHALL HAVE GASKETED JOINTS CONFORMING TO ASTM C-361.

10. STORM SEWER CASTING THAT ARE NOT TO BE RE-USED SHALL BE RETURNED TO DUPAGE COUNTY.

11. THE COST OF MAKING STORM SEWER CONNECTIONS TO EXISTING OR PROPOSED SEWER OR DRAINAGE STRUCTURES SHALL BE INCLUDED IN THE COST OF THE STORM SEWER BEING CONNECTED.

12. PROVIDE TRENCH BACKFILL IN ACCORDANCE WITH IDOT SPECIFICATIONS.

13. THE CONTRACTOR SHALL FURNISH ALL LABOR, EQUIPMENT AND MATERIAL NECESSARY FOR DEWATERING EXCAVATIONS AS WELL AS SHORING TRENCH WALLS DURING GRADING, UTILITY AND STORM SEWER OPERATIONS. THE COST OF COMPLIANCE WITH THE ABOVE, SHALL BE INCLUDED IN THE COST OF THE UTILITY BEING INSTALLED.

MAINTENANCE OF TRAFFIC NOTES

- TRAFFIC CONTROL AND PROTECTION SHALL BE PERFORMED IN ACCORDANCE WITH THE MAINTENANCE OF TRAFFIC NOTES AND PROTECTION SECTION 701 OF THE STANDARD SPECIFICATIONS.
- THE CONTRACTOR SHALL BE RESPONSIBLE FOR THE INSTALLATION AND MAINTENANCE OF ADEQUATE SIGNS, TRAFFIC CONTROL DEVICES AND WARNING DEVICES TO INFORM AND PROTECT THE PUBLIC DURING ALL PHASES OF CONSTRUCTION. BARRICADES AND WARNING SIGNS SHALL BE PROVIDED IN ACCORDANCE WITH ARTICLE 107.14 OF THE IDOT STANDARD SPECIFICATIONS. ALL TRAFFIC CONTROL WORK SHALL BE DONE IN ACCORDANCE WITH IDOT "MANUAL ON UNIFORM TRAFFIC CONTROL DEVICES."
- THE CONTRACTOR SHALL MAINTAIN ACCESS TO ALL PROPERTIES AT ALL TIMES DURING CONSTRUCTION OPERATIONS, UNLESS OTHERWISE NOTED ON PLANS.
- ALL TRAFFIC CONTROL DEVICES SHALL BE MAINTAINED THROUGH THE COMPLETION OF THE CONTRACT.
- ALL HOLES MUST BE PLATED OR FILLED BEFORE COMPLETION OF THE WORK DAY.
- ALL TRAFFIC CONTROL DEVICES ARE CONSIDERED INCIDENTAL TO THE CONTRACT AND NO ADDITIONAL COMPENSATION WILL BE PROVIDED.

IDOT HIGHWAY STANDARDS

542301-03	PRECAST REINFORCED CONCRETE FLARED END SECTION
602001-02	CATCH BASIN, TYPE A
602701-02	MANHOLE STEPS
604036-03	FRAME AND GRATE, TYPE 8
701901-08	TRAFFIC CONTROL DEVICES
720006-04	SIGN PANEL ERECTION DETAILS
720011-01	METAL POSTS FOR SIGNS, MARKERS & DELINEATORS
729001-01	APPLICATIONS OF TYPES A & B METAL POSTS

ILLINOIS URBAN MANUAL STANDARDS

IUM-530	EROSION CONTROL BLANKET INSTALLATION DETAILS
IUM-617A	FLOATING SILT CURTAIN - TYPICAL LAYOUT
IUM-617B	FLOATING SILT CURTAIN - PANEL CONNECTORS
IL-630	STABILIZED CONSTRUCTION ENTRANCE PLAN
IL-650	SUMP PIT PLAN
IL-910	ROCK OUTLET PROTECTION



V3 Companies
7325 Jonon Avenue
Woodridge, IL 60517
630.724.9200 Phone
630.724.9202 Fax
www.v3cc.com

USER NAME = cgray
PLOT SCALE =
PLOT DATE = 5/12/2023

DESIGNED -
DRAWN -
CHECKED - JNHM
DATE -

REVISED -
REVISED -
REVISED -
REVISED -

REVISED -
REVISED -
REVISED -
REVISED -

REVISED -
REVISED -
REVISED -
REVISED -

DUPAGE COUNTY CAMPUS
STORMWATER POND IMPROVEMENTS
ENGINEERING PLANS

WINHELD / WHEATON

ILLINOIS

GENERAL NOTES

SCALE: 1"=40'

SHEET

1

OF

1

SHEETS

STA.

TO STA.

COUNTY
DUPAGE

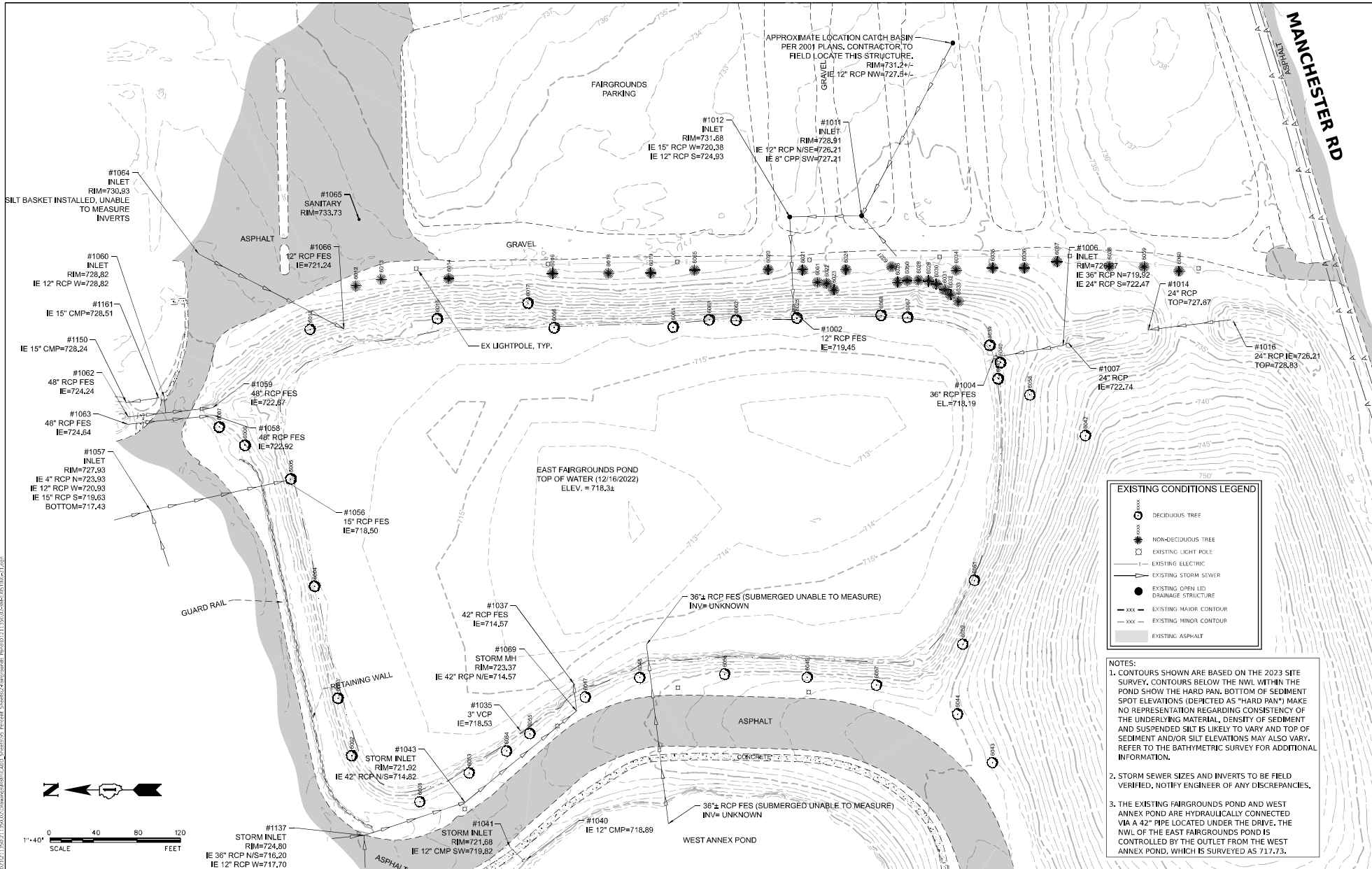
TOTAL
SHEETS

21

SHEET
NO.

2

CONTRACT NO. 16172203



 <div>V3 Companies 7325 Jaxon Avenue Woodridge, IL 60517 630.724.9200 phone 630.724.9202 fax www.v3cc.com</div>	USER NAME = clay	DESIGNED - CEB	REVISED -	REVISED -	DUPAGE COUNTY CAMPUS STORMWATER POND IMPROVEMENTS ENGINEERING PLANS	ILLINOIS SCALE: 1" = 40' SHEET 1 OF 1 SHEETS STA. TO STA.	EXISTING CONDITIONS - FAIRGROUNDS POND	COUNTY	TOTAL SHEETS	SHEET NO.
		DRAWN - CMR	REVISED -	REVISED -				DUPAGE	21	3
		CHECKED - JNHM	REVISED -	REVISED -				PROJECT NO. 211350		
		DATE -	REVISED -	REVISED -						

TREE ID	Description	DBAM, INCHES DBH
6002	Mulleberry	8.5
6003	Siberian Elm	2, 3, 1.5
6004	Siberian Elm	7
6005	Ash	6
6006	Mulleberry	5
6007	Calbery Pear	6
6011	Hawthorn	6
6002	Mulleberry	8.5
6003	Siberian Elm	2, 3, 1.5
6004	Siberian Elm	7
6005	Ash	6
6006	Mulleberry	5
6007	Calbery Pear	6
6014	Arbortvitae	4, 4, 6, 5
6015	Honey Locust	6.5
6016	Australian Pine	10
6017	Willow	8, 9, 10.5, 8.5, 12.5
6018	Colorado Blue Spruce	9
6019	Australian Pine	7, 7, 7, 4
6020	Colorado Blue Spruce	10
6021	Colorado Blue Spruce	11
6024	Australian Pine	12
6027	Australian Pine	6.5
6034	Colorado Blue Spruce	7
6035	White Pine	14.75
6036	White Pine	8.5
6037	White Pine	11.5
6039	Cottonwood	7
6040	Cottonwood	9.5
6041	Cottonwood	6
6061	White Cedar	
6065	White Pine	5
6066	Eastern Cottonwood	
6067	Eastern Cottonwood	
6068	Eastern Cottonwood	



DESIGNED -	CEB	REVISED -	4-14-2023
DRAWN -	CMR	REVISED -	
CHECKED -	JNHM	REVISED -	
DATE -		REVISED -	


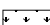





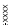
DUPAGE COUNTY CAMPUS
STORMWATER POND IMPROVEMENTS
ENGINEERING PLANS

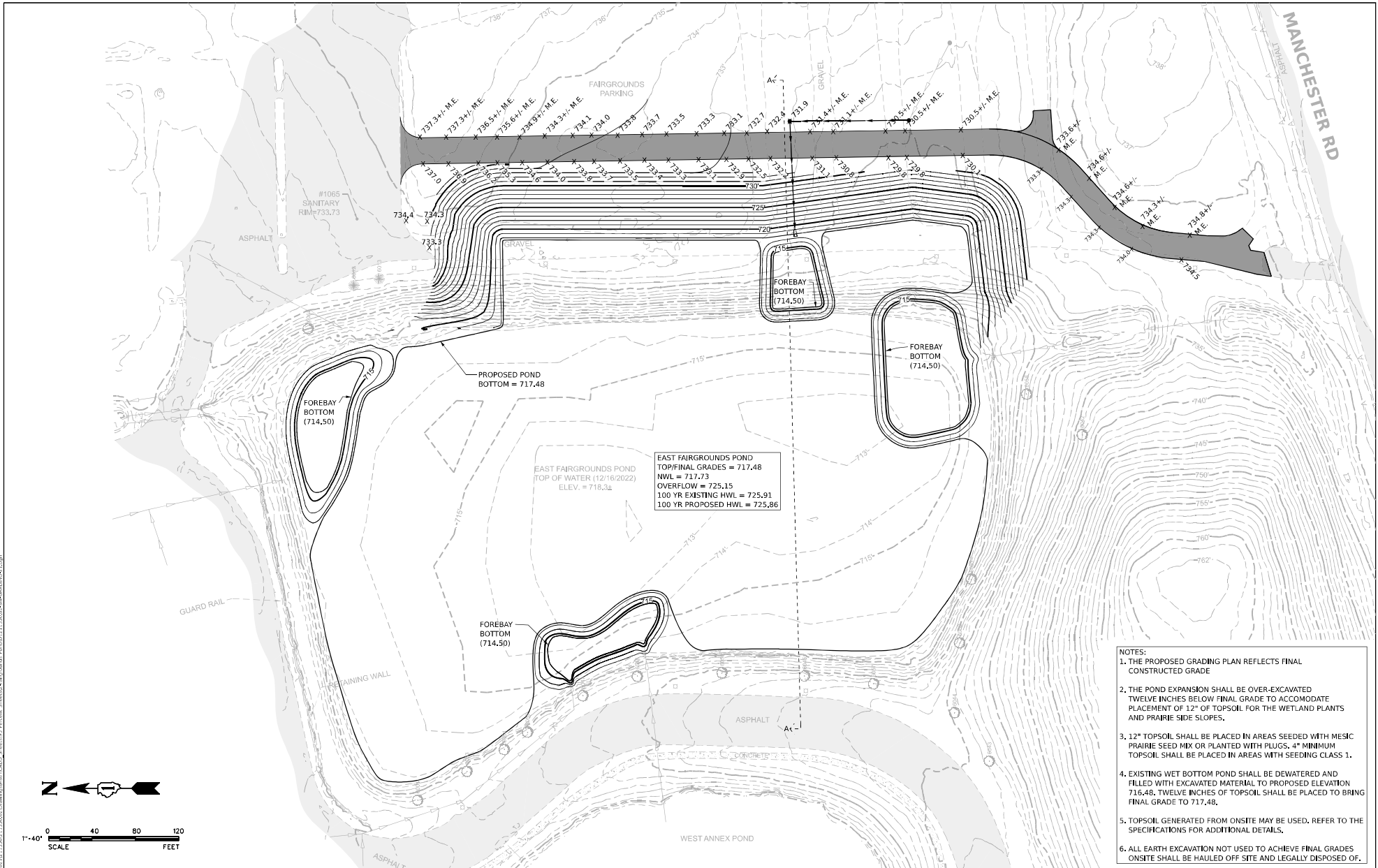
	COUNTY	TOTAL SHEETS	SHEET NO.
	DUPAGE	21	4
TO STA.	PROJECT NO. 211350		

NOTES:

1. THE LENGTH OF STORM SEWER REMOVAL 8" SHOWN ON THE PLANS IS MEASURED FROM THE EXISTING INLET TO THE POND. THE LENGTH APPROXIMATELY 100' WILL BE FIELD VERIFIED. IT IS BELIEVED THE STRUCTURE AT THE UPSTREAM END OF THE PIPE WAS REMOVED IN 2001 PER THE 2001 DESIGN PLANS. THIS SHALL BE FIELD VERIFIED. THE ENGINEER SHALL BE NOTIFIED IF A DRAINAGE STRUCTURE IS FOUND. THE ENGINEER SHALL BE NOTIFIED IF THE REMOVAL LENGTH VARIES. THE QUANTITIES FOR STORM SEWER REMOVAL 8" AND DRAINAGE STRUCTURE REMOVAL MAY BE ADJUSTED UP OR DOWN DEPENDING ON ACTUAL FIELD CONDITIONS.
2. REMOVAL OF TREES LESS THAN 6 INCHES DIAMETER, AND SHRUBS, LOCATED WITHIN THE EARTH EXCAVATION AREA, SHALL BE INCLUDED IN EARTH EXCAVATION AND SHALL NOT BE PAID FOR SEPARATELY. REMOVAL SHALL BE PER SECTION 201 OF THE STANDARD SPECIFICATIONS.

REMOVAL LEGEND

	GRAVEL PAVEMENT REMOVAL (2715 SQ YD)
	SELECTIVE CLEARING (2680 SQ YD)
	STORM SEWER REMOVAL
	REMOVE ELECTRIC CABLE FROM CONDUIT
	DRAINAGE STRUCTURE REMOVAL
	RELOCATE EXISTING LIGHTING POLE. SPECIAL REMOVAL OF POLE FOUNDATION
	TREE OR SHRUB TO BE REMOVED, OR SPADE AND RELOCATE TREE. SEE SCHEDULES.
	TREE TRUNK PROTECTION



- NOTES:
1. THE PROPOSED GRADING PLAN REFLECTS FINAL CONSTRUCTED GRADE
 2. THE POND EXPANSION SHALL BE OVER-EXCAVATED TWELVE INCHES BELOW FINAL GRADE TO ACCOMMODATE PLACEMENT OF 12" OF TOPSOIL FOR THE WETLAND PLANTS AND PRAIRIE SIDE SLOPES.
 3. 12" TOPSOIL SHALL BE PLACED IN AREAS SEEDED WITH MESIC PRAIRIE SEED MIX OR PLANTED WITH PLUGS. 4" MINIMUM TOPSOIL SHALL BE PLACED IN AREAS WITH SEEDING CLASS 1.
 4. EXISTING WET BOTTOM POND SHALL BE DEWATERED AND FILLED WITH EXCAVATION MATERIAL TO PROPOSED ELEVATION 716.48. TWELVE INCHES OF TOPSOIL SHALL BE PLACED TO BRING FINAL GRADE TO 717.48.
 5. TOPSOIL GENERATED FROM ONSITE MAY BE USED, REFER TO THE SPECIFICATIONS FOR ADDITIONAL DETAILS.
 6. ALL EARTH EXCAVATION NOT USED TO ACHIEVE FINAL GRADES ONSITE SHALL BE HAULED OFF SITE AND LEGALLY DISPOSED OF.

	V3 Companies 7325 Jaxon Avenue Woodridge, IL 60517 630.724.9200 phone 630.724.9202 fax www.v3cb.com	USER NAME =	ceay	DESIGNED -	CEB	REVISED -	5-2-2023	REVISED -		DUPAGE COUNTY CAMPUS STORMWATER POND IMPROVEMENTS ENGINEERING PLANS	WINFIELD / WHEATON	ILLINOIS	SCALE: 1" = 40'	SHEET 1	OF 2 SHEETS	STA. TO STA.	COUNTY	TOTAL SHEETS	SHEET NO.
				DRAWN -	CMR	REVISED -		REVISED -									DUPAGE	21	5
		PLOT SCALE =		CHECKED -	JNHM	REVISED -		REVISED -									PROJECT NO.	211350	
		PLOT DATE =	5/1/2023	DATE =		REVISED -		REVISED -											

CROSS SECTION A-A

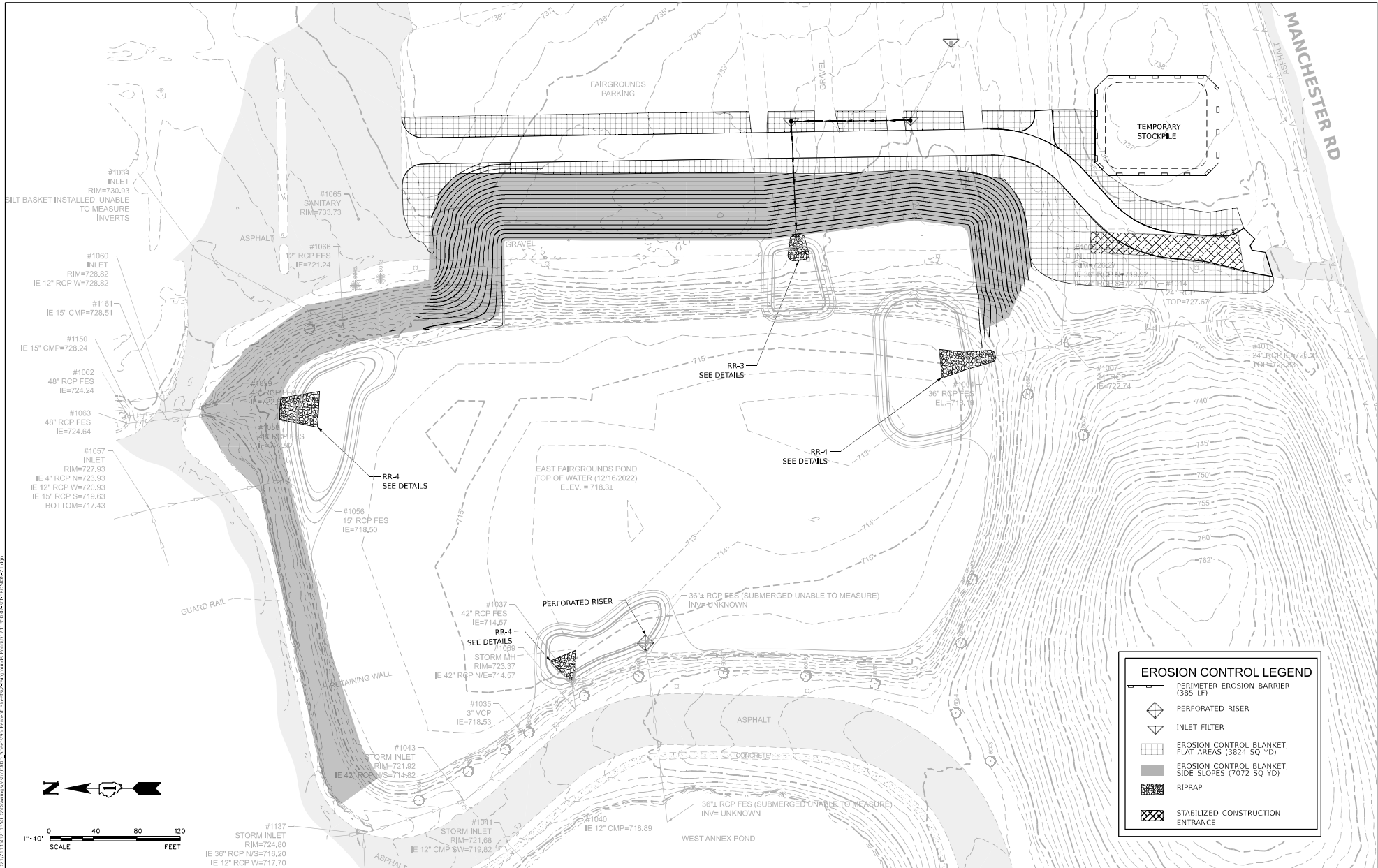
The diagram illustrates a cross-section of a pond and its embankment. The vertical axis represents elevation in feet, ranging from 705 to 735. The horizontal axis represents stationing, ranging from 0+00 to 6+00. The pond is located between stations 0+50 and 3+50, with a bottom elevation of 717.48. A forebay is located to the right of the pond, with a bottom elevation of 714.50. The embankment on the right side of the forebay has a 4:1 slope and is topped with 12" topsoil. The area between the pond bottom and the existing grade (top/hardpan) is labeled as earth excavation to be placed in the pond up to 716.48'. The area between the pond bottom and the existing grade (top/sediment) is labeled as topsoil to be placed 716.48 to 717.48. The existing grade (top/hardpan) is shown as a dashed line, and the existing grade (top/sediment) is shown as a dotted line. The pond bottom is shown as a solid line.

Station	Elevation (ft)	Description
0+50	717.73	NWL
0+50	716.48	Topsoil to be placed
0+50	717.48	Pond bottom
3+50	717.48	Pond bottom
3+50	714.50	Forebay bottom
4+50	714.50	Forebay bottom
4+50	716.48	Earth excavation to be placed in pond
4+50	717.48	Topsoil to be placed

ELEVATION	AREA (acres)	AVERAGE AREA (acres)	STAGE VOLUME (acre-feet)	CUMULATIVE VOLUME (acre-feet)	COMMENT
717.00	5.41				
717.73	5.55			0.00	NWL
718.00	5.60	5.575	1.505	1.51	
719.0	5.81	5.705	5.705	7.21	
720.0	5.98	5.895	5.895	13.11	
721.0	6.15	6.065	6.065	19.17	
722.0	6.35	6.250	6.250	25.42	
723.0	6.60	6.475	6.475	31.90	
724.0	6.89	6.745	6.745	38.64	
725.0	7.13	7.010	7.010	45.65	
725.15		7.230	7.230	46.73	overlapping / HWL
726.0	7.33	7.435	7.435	52.88	
727.0	7.54			60.32	

Total Volume Provided = **46.73** ac-ft at 725.15 overflow
40.09 Exist vol provided at 725.15 overflow
 New Volume Provided = **6.64** ac-ft at 725.15 overflow





Model: D:\dupage\2013\211350\211350.dwg
 User: J. Smith
 Date: 5/1/2023
 Plot: 5/1/2023
 Scale: 1" = 40'
 Sheet: 1 of 1
 Project: 211350

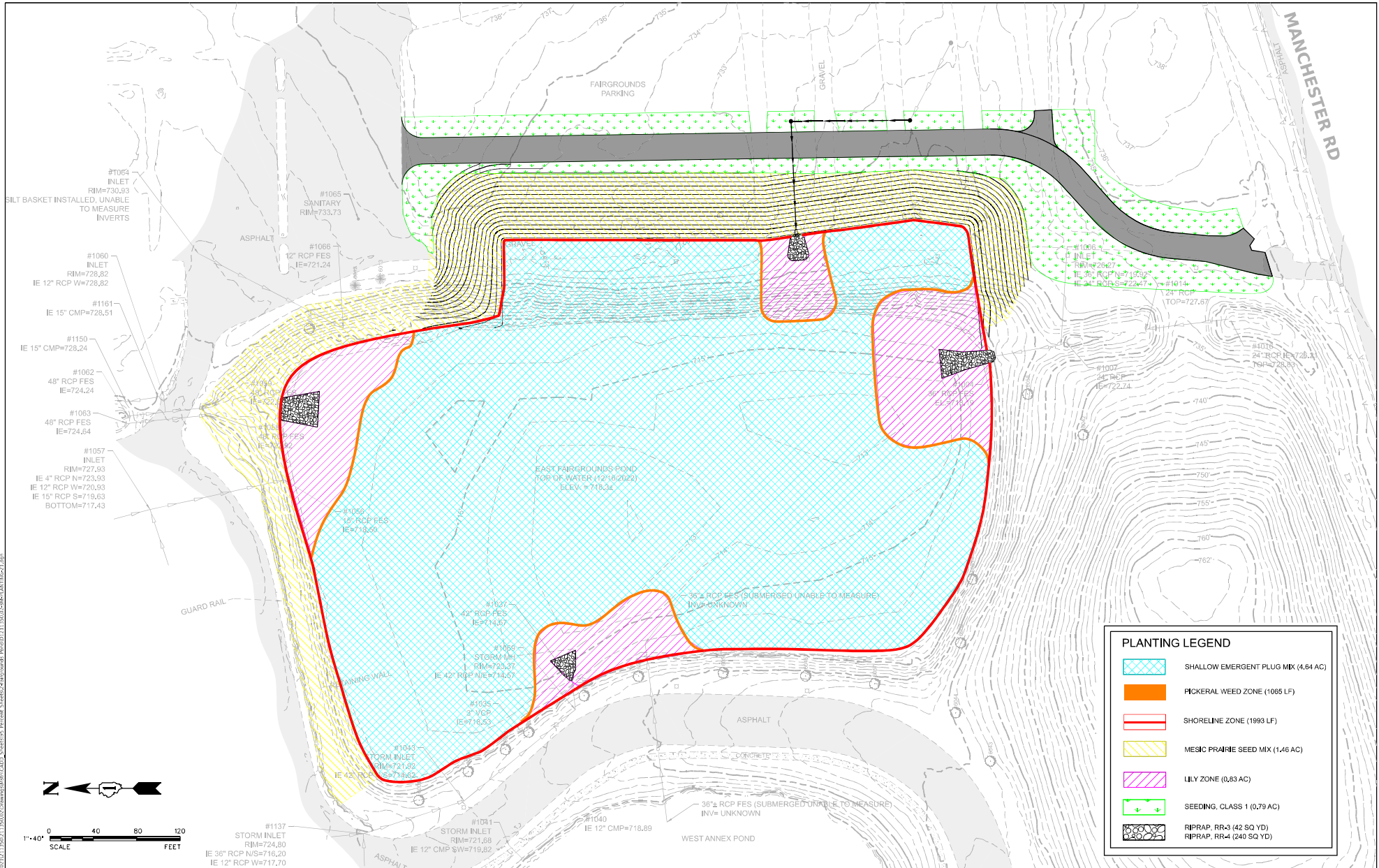


V3 Companies
 7325 Jaxon Avenue
 Woodridge, IL 60517
 815.724.9200 phone
 815.724.9202 fax
 www.v3cc.com

USER NAME	cray	DESIGNED	CMR	REVISED	-	REVISED	-
DRAWN	CMR	CHECKED	JNHM	REVISED	-	REVISED	-
PLOT SCALE	=	DATE	-	REVISED	-	REVISED	-
PLOT DATE	= 5/1/2023						

DUPAGE COUNTY CAMPUS
STORMWATER POND IMPROVEMENTS
ENGINEERING PLANS

COUNTY	TOTAL SHEETS	SHEET NO.
DUPAGE	21	9
PROJECT NO.	211350	



MODEL: D:\mduffy\211350\211350.dwg
 PLOT DATE: 5/1/2023
 PLOT SCALE: 1"=40'
 PLOT DATE: 5/1/2023

	V3 Companies 7325 Jaxon Avenue Woodridge, IL 60517 630.724.9200 phone 630.724.9202 fax www.v3cc.com		USER NAME = <i>vay</i>		DESIGNED = <i>DJJ</i>	REVIEWED =	REVIEWED =	REVIEWED =	DUPAGE COUNTY CAMPUS STORMWATER POND IMPROVEMENTS ENGINEERING PLANS		PLANTING PLAN - FAIRGROUNDS POND		COUNTY	TOTAL SHEETS	SHEET NO.	
				DRAWN = <i>CMR</i>	REVIEWED =	REVIEWED =	REVIEWED =	REVIEWED =					DUPAGE	21	10	
			PLOT SCALE =	CHECKED = <i>JNHM</i>	REVIEWED =	REVIEWED =	REVIEWED =	REVIEWED =								
			PLOT DATE = 5/1/2023	DATE =	REVIEWED =	REVIEWED =	REVIEWED =	REVIEWED =	WINFIELD / WILKSTON		ILLINOIS		SCALE: 1" = 40'		SHEET 1 OF 1 SHEETS	STA. TO STA.

MODEL: Default
FILE NAME: N:\2021\211350.02\Crowlines\Mstr\CADD Sheets\95 Percent Sheets\2-Falgrounds_PendID1211350-02-shb-Pl ANTING-22.dgn



V3 Companies
7325 James Avenue
Woodridge, IL 60091
630.724.9200 phone
630.724.9202 fax
www.v3co.com

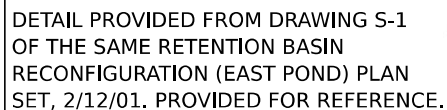
PERFORMANCE STANDARDS FOR PLANTING AT FAIRGROUNDS POND

The following performance standards apply to the planting area at the Fairground:

performance standards are met. Performance standards apply to each vegetat

2. Within 3 months of seed installation, at least 80% of the seeded areas (mesic prairie), as measured by aerial coverage, shall be vegetated. A minimum 90% vegetative coverage shall be achieved in the second year and maintained throughout, and at the end of, the three-year period for this area.
3. At the end of the second growing season no areas (mesic prairie slopes) shall contain unvegetated areas greater than one square meter. This standard shall be maintained until sign off is achieved.
4. At the end of the second growing season, relative coverage of non-native species in the stormwater area cannot exceed 75%. As such, relative coverage of natives shall be 25% or greater at the end of the second growing season. At the end of the third growing season, relative coverage of non-native species in the stormwater areas cannot exceed 25%. As such, relative coverage of natives shall be 75% or greater at the end of the third growing season.
5. By the end of each growing season, the top three most dominant species based on relative coverage in each vegetation zone shall not be non-native. Examples of non-native species shall include, but not be limited to, the following: reed canary grass (*Phalaris arundinacea*); common reed (*Phragmites australis*); field thistle (*Cirsium arvense*); buckthorn (*Rhamnus* spp.); cattails (*Typha* spp.); teasel (*Dipsacus* spp.); purple loosestrife (*Lythrum salicaria*); clover (*Trifolium* spp.); and sweet clover (*Melilotus* spp.).
6. At the end of the third growing season, 50% vegetative coverage or greater shall be achieved within the stormwater emergent planting zones.
7. The stormwater areas shall not contain any rills greater than 3 inches wide and 3 inches deep throughout, and at the end, of the three-year period.
8. A Floristic Quality Index (FQI) of 20 and a Coefficient of Conservatism value of 3.5 or greater shall be achieved by the end of the third growing season.

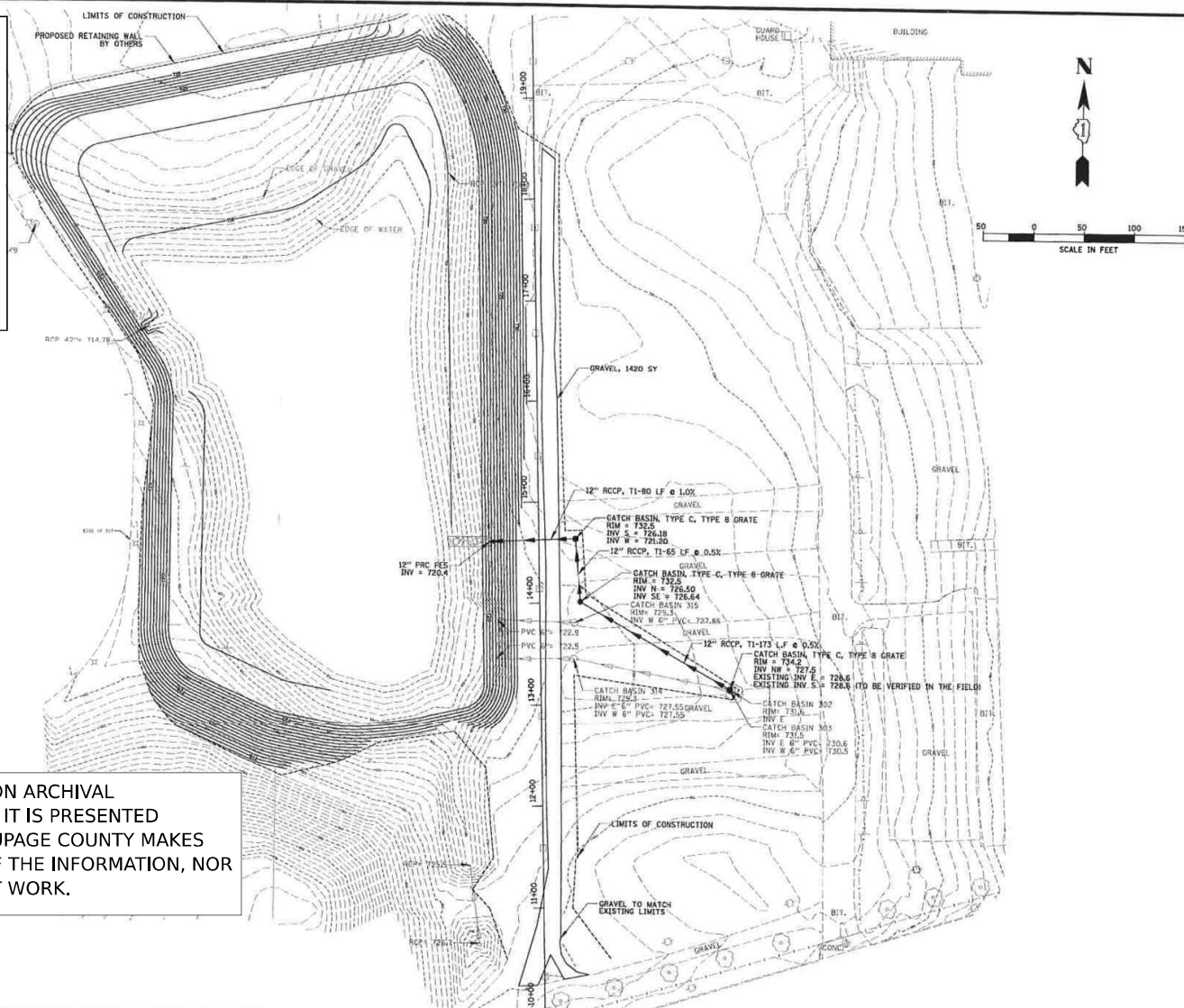
AMPUS ROVEMENTS ANS ILLINOIS	PLANTING PLAN - FAIRGROUNDS POND PERFORMANCE STANDARDS				COUNTY	TOTAL SHEETS	SHEET NO.
					DUPAGE	21	11
	SCALE: 1"=40'	SHEET 2 OF 2 SHEETS		STA. TO STA.	PROJECT NO. 211350		



	EXISTING CONDITIONS	PROPOSED CONDITIONS
NWL (FT-NGVD)	717.7	717.7
DESIGN HWL (FT-NGVD)	726.0	726.0
STORAGE AT DESIGN HWL (GROSS-Feet)	30.8	45.0
STORAGE ALLOCATED FOR FUTURE PROJECTS BELOW ELEVATION 726.0 (GROSS-Feet)	0	14.2

REFERENCE ONLY -
NOT TO SCALE

THIS REFERENCE DRAWING IS BASED UPON ARCHIVAL
DATA IN POSSESSION BY DUPAGE COUNTY. IT IS PRESENTED
SOLELY FOR INFORMATION PURPOSES. DUPAGE COUNTY MAKES
NO GUARANTEE AS TO THE ACCURACY OF THE INFORMATION, NOR
IS IT TO BE USED TO EXECUTE CONTRACT WORK.



CB **CHRISTOPHER B. BURKE** ENGINEERING LTD.
9575 West Higgins Road, Suite 600
Rosemont, Illinois 60018
(847) 823-0500

CLIENT: **DUPAGE COUNTY**
DEPARTMENT OF DEVELOPMENT AND STORMWATER

				DSGN.	LWF	
				DWN.	AAR	
2	1/24/01	PER DUPAGE COUNTY/CITY OF WHEATON REVIEW	LWF	CHKD.	ELG	
1	10/25/99	PUR CITY REVIEW	JCS	SCALE:	1" = 50'	
NO.	DATE	NATURE OF REVISION	CHKD.	DATE:	02/20/01	
FILE NAME	m:\dgn\dupage\89-030\DESIGN\GRD89-030.PLN					

TITLE: **RETENTION BASIN RECONFIGURATION
(EAST POND)
GRADING PLAN**

PROJECT NO.	89-030
SHEET 5	OF 12
DRAWING NO.	C-3



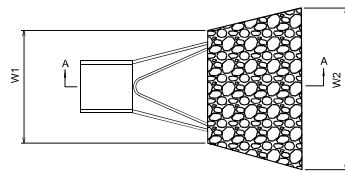
V3 Companies
7325 Jones Avenue
Woodridge, IL 60517
630.724.9200 phone
630.724.9202 fax
www.v3co.com

USER NAME = cray	DESIGNED - _____	REVISED - _____	REVISED - _____
	DRAWN - _____	REVISED - _____	REVISED - _____
PLOT SCALE =	CHECKED - _____	REVISED - _____	REVISED - _____
PLOT DATE = 5/1/2021	DATE - _____	REVISED - _____	REVISED - _____

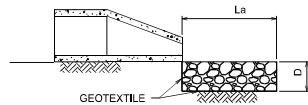
DUPAGE COUNTY CAMPUS
STORMWATER POND IMPROVEMENTS
ENGINEERING PLANS

REFERENCE: EAST FAIRGROUNDS POND
2001 DESIGN PLAN BY OTHERS

COUNTY	TOTAL SHEETS	SHEET NO.
DUPAGE	21	13
PROJECT NO. 211350		



PLAN



SECTION A-A

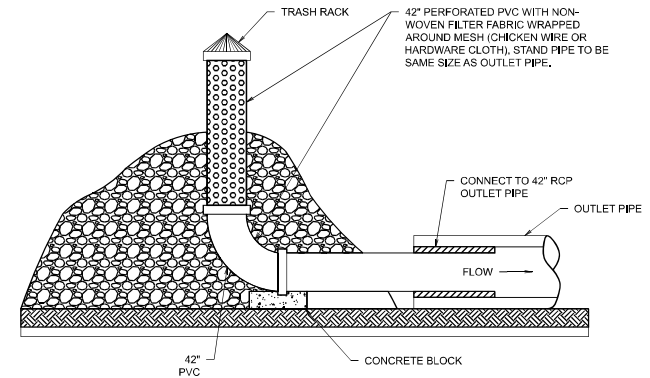
NOTES:

1. The filter fabric shall meet the requirements in material specifications 592 GEOTEXTILE Table 1 or 2, class I, II, or III
2. The rock riprap shall meet the IDOT requirements for the gradation as shown in the table.
3. See I/M Code 910 For Rip-Rap Sizing.
4. The riprap shall be placed according to construction specification 61 LOOSE ROCK RIPRAP. The rock may be equipment placed.

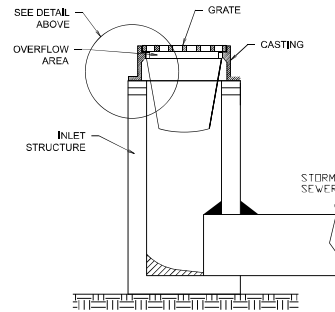
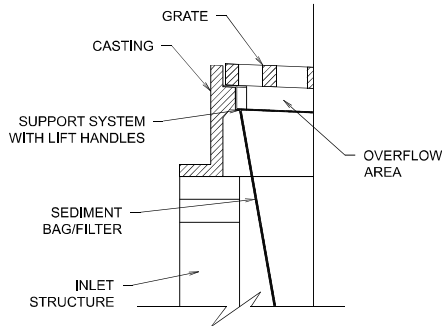
ROCK PROTECTION AT PIPE OUTLET, N.T.S.

LOCATION	RR SIZE	La	W1	W2	D
FES-10	RR-3	10'	3'	11'	15"
EX. N. DITCH (EAST POND)	RR-4	35'	20'	35'	20"
EX. S. 36" PIPE (EAST POND)	RR-4	24'	9'	27'	20"
EX. W. 42" PIPE (EAST POND)	RR-4	22'	11'	26'	20"

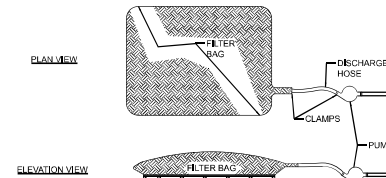
TABLE OF VALUES FOR ROCK PROTECTION



TEMPORARY PERFORATED RISER, N.T.S.



INLET FILTERS, NTS



NOTE: FILTER BAG SHALL BE PLACED ON A WELL VEGETATED GRASSY AREA OR SURROUNDED BY PERIMETER SEDIMENT PROTECTION.

LOW VOLUME FILTER BAGS SHALL BE MADE FROM NON-WOVEN GEOTEXTILE MATERIAL SEWN WITH HIGH STRENGTH, DOUBLE STITCHED "J" TYPE SEAMS. THEY SHALL BE CAPABLE OF TRAPPING PARTICLES LARGER THAN 150 MICRONS. HIGH VOLUME FILTER BAGS SHALL BE MADE FROM WOVEN GEOTEXTILES THAT MEET THE FOLLOWING STANDARDS:

A SUITABLE MEANS OF ACCESSING THE BAG WITH MACHINERY REQUIRED FOR DISPOSAL PURPOSES SHALL BE PROVIDED. FILTER BAGS SHALL BE REPLACED WHEN THEY BECOME 1/2 FULL OF SEDIMENT. SPARE BAGS SHALL BE AVAILABLE ON SITE FOR REPLACEMENT OF THOSE THAT HAVE FAILED OR ARE FILLED. BAGS SHALL BE PLACED ON STRAPS TO FACILITATE REMOVAL UNLESS BAGS COME WITH LIFTING STRAPS ALREADY ATTACHED.

BAGS SHALL BE PLACED IN ACCORDANCE WITH DUPAGE COUNTY DEWATERING GUIDELINES.

IF PERMITTED BY DUPAGE COUNTY DEWATERING GUIDELINES, BAGS SHALL BE LOCATED IN WELL-VEGETATED (GRASSY) AREA, AND DISCHARGE ONTO STABLE, EROSION RESISTANT AREAS, WHERE THIS IS NOT POSSIBLE, A GEOTEXTILE UNDERLAYMENT AND FLOW PATH SHALL BE PROVIDED. BAGS MAY BE PLACED ON FILTER STONE TO INCREASE DISCHARGE CAPACITY. BAGS SHALL NOT BE PLACED ON SLOPES GREATER THAN 5% FOR SLOPES EXCEEDING 5% CLEAN ROCK OR OTHER NON-ERODIBLE AND NON-POLLUTING MATERIAL MAY BE PLACED UNDER THE BAG TO REDUCE SLOPE STEEPNESS.

NO DOWNSLOPE SEDIMENT BARRIER IS REQUIRED FOR MOST INSTALLATIONS, HOWEVER, IF NECESSARY TO CAPTURE ANY REMAINING SEDIMENT WITHIN THE RUNOFF AND OVER THE SITE SPECIFIC CONDITIONS A COMPOST BERM, COMPOST FILTER SOCK OR WATTLE SHALL BE INSTALLED BELOW BAGS LOCATED WITHIN 100 FEET OF ANY RECEIVING SURFACE WATER OR WHERE GRASSY AREA IS NOT AVAILABLE.

THE PUMP DISCHARGE HOSE SHALL BE INSERTED INTO THE BAGS IN THE MANNER SPECIFIED BY THE MANUFACTURER AND SECURELY CLAMPED. A PIECE OF PVC PIPE IS RECOMMENDED FOR THIS PURPOSE.

THE PUMPING RATE SHALL BE NO GREATER THAN 750 GPM OR 1/2 THE MAXIMUM SPECIFIED BY THE MANUFACTURER, WHICHEVER IS LESS. PUMP INTAKES SHALL BE FLOATING AND SCREENED.

FILTER BAGS SHALL BE INSPECTED AT LEAST ONCE DAILY. IF ANY PROBLEM IS DETECTED, PUMPING SHALL CEASE IMMEDIATELY AND SHALL NOT RESUME UNTIL A REMEDIAL SOLUTION IS ESTABLISHED AND THE PROBLEM IS CORRECTED.

SEDIMENT FILTRATION BAGS SHALL BE RAISED ABOVE THE SUPPORTING GROUND ON A SURFACE, OR MATERIAL THAT ALLOWS WATER TO FLOW OUT OF THE BOTTOM OF THE BAG AT THE RESPECTIVE DESIGN DISCHARGE RATE FOR THE SEDIMENT FILTER BAG SELECTED.

DEWATERING FILTER BAG DETAIL



V3 Companies
7325 Jaxon Avenue
Woodridge, IL 60517
630.724.9200 phone
630.724.9202 fax
www.v3cc.com

USER NAME = cgray
PLOT SCALE =
PLOT DATE = 5/12/2023

DESIGNED - CEB
DRAWN - CMR
CHECKED - JNHM
DATE -

REVISED -
REVISED -
REVISED -
REVISED -

REVISED -
REVISED -
REVISED -
REVISED -

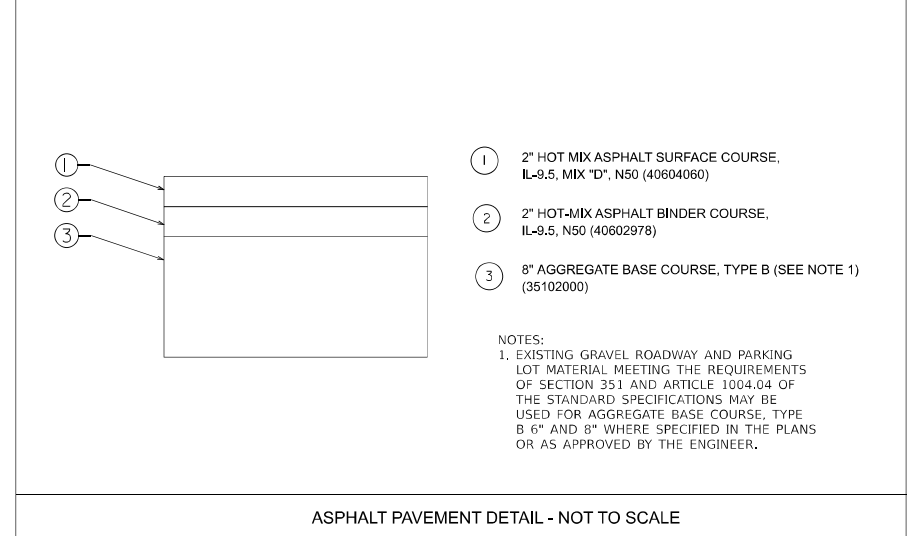
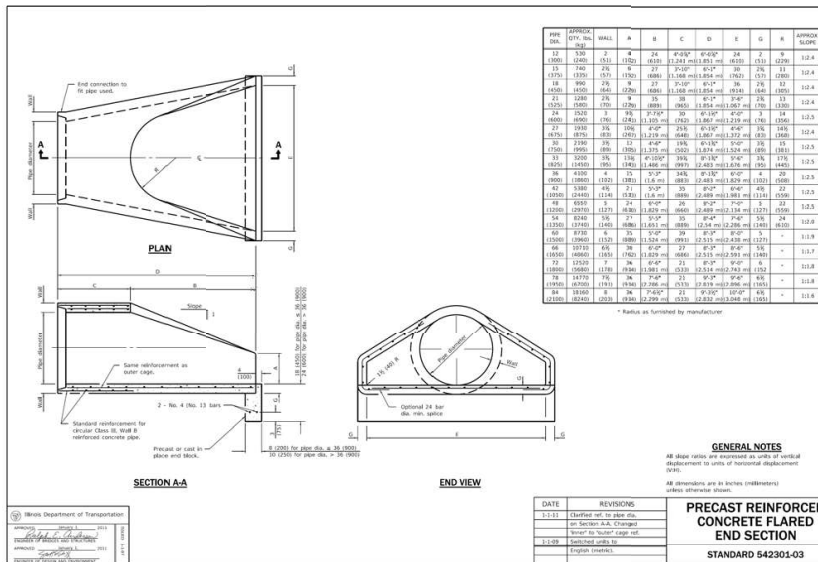
DUPAGE COUNTY CAMPUS
STORMWATER POND IMPROVEMENTS
ENGINEERING PLANS
WINFIELD / WHEATON

ILLINOIS

EROSION CONTROL DETAILS

SCALE: N.T.S. SHEET 1 OF 2 SHEETS STA. TO STA.

COUNTY	TOTAL SHEETS	SHEET NO.
DUPAGE	21	15
PROJECT NO. 211350		



V3 Companies
 7325 Jaxon Avenue
 Woodridge, IL 60517
 815.724.9200 phone
 815.724.9202 fax
 www.v3cc.com

USER NAME = cjay	DESIGNED -	REVISED - 5-2-2023	REVISED -
DRAWN -	DRAWN -	REVISED -	REVISED -
CHECKED -	CHECKED -	REVISED -	REVISED -
DATE = 5/1/2023	DATE -	REVISED -	REVISED -

**DUPAGE COUNTY CAMPUS
 STORMWATER POND IMPROVEMENTS
 ENGINEERING PLANS**

CONSTRUCTION DETAILS		COUNTY	TOTAL SHEETS	SHEET NO.
SCALE: N.T.S.		DUPAGE	21	17
SHEET 1 OF 5 SHEETS STA. TO STA.		PROJECT NO. 211350		

MD0011 Detail 11/19/21 11:50:02 C:\Users\jordan\OneDrive\Documents\CAUS_Sheet\05 Revise Sheet\01115013-CAUS-05.dwg



V3 Companies
7325 Jaxon Avenue
Woodridge, IL 60517
630.724.9200 phone
630.724.9202 fax
www.v3cb.com

USER NAME = cjay
PLOT SCALE =
PLOT DATE = 5/1/2023

DESIGNED -
DRAWN -
CHECKED -
DATE -

REVISED -
REVISED -
REVISED -
REVISED -

REVISED -
REVISED -
REVISED -
REVISED -

DUPAGE COUNTY CAMPUS
STORMWATER POND IMPROVEMENTS
ENGINEERING PLANS

WINHELD / WHEATON

ILLINOIS

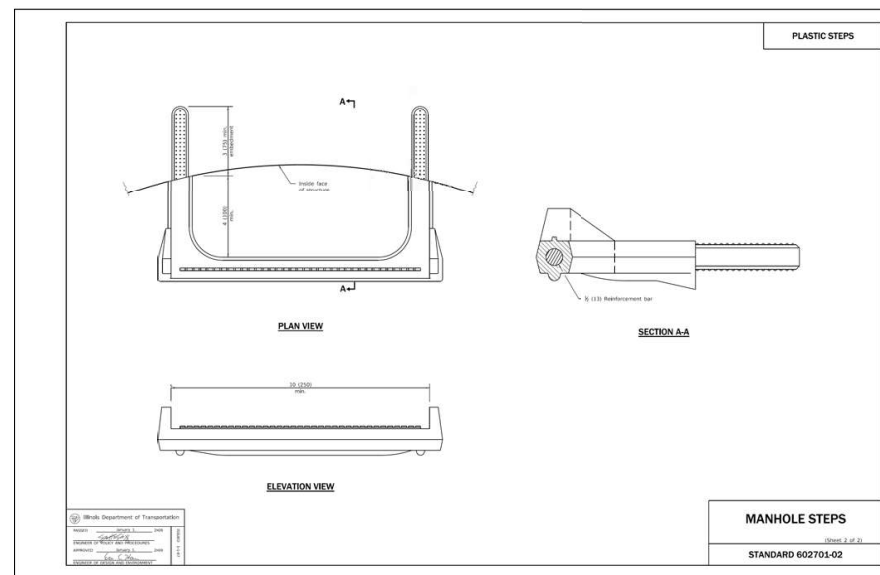
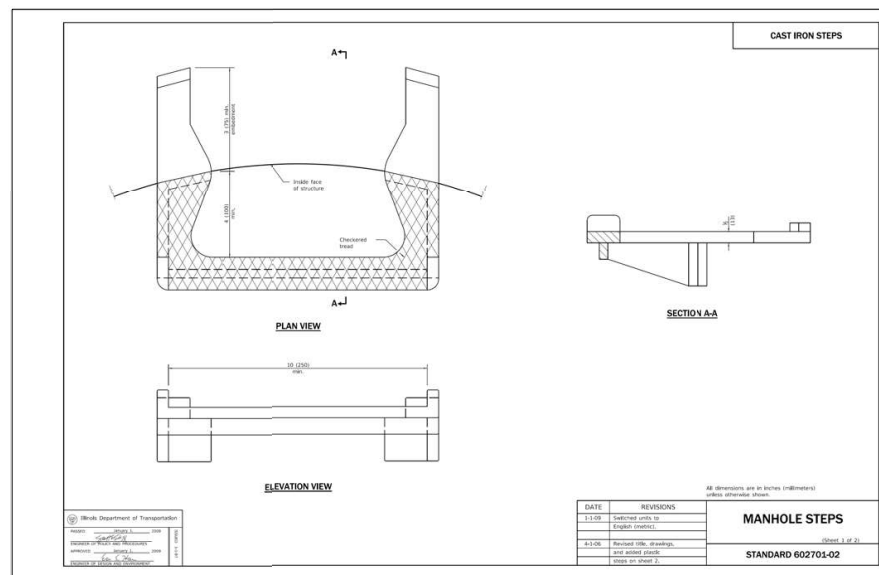
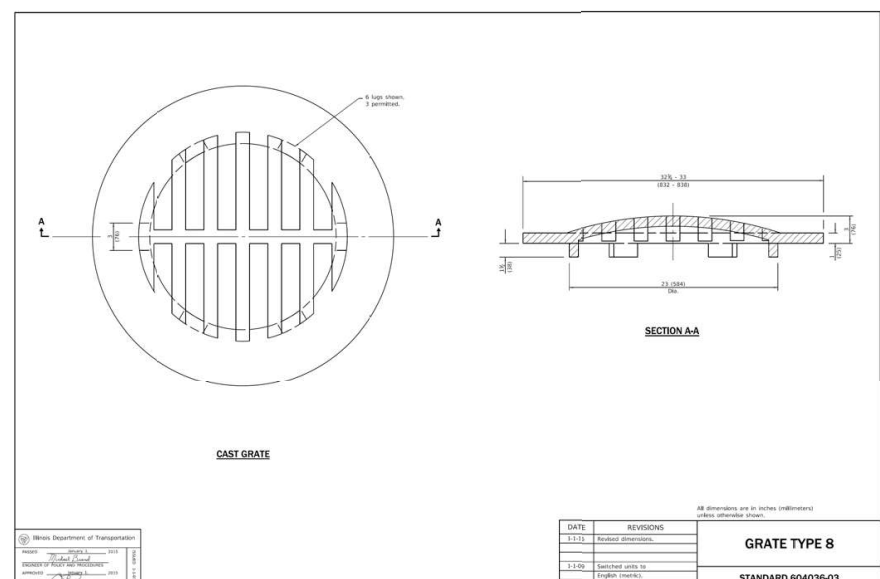
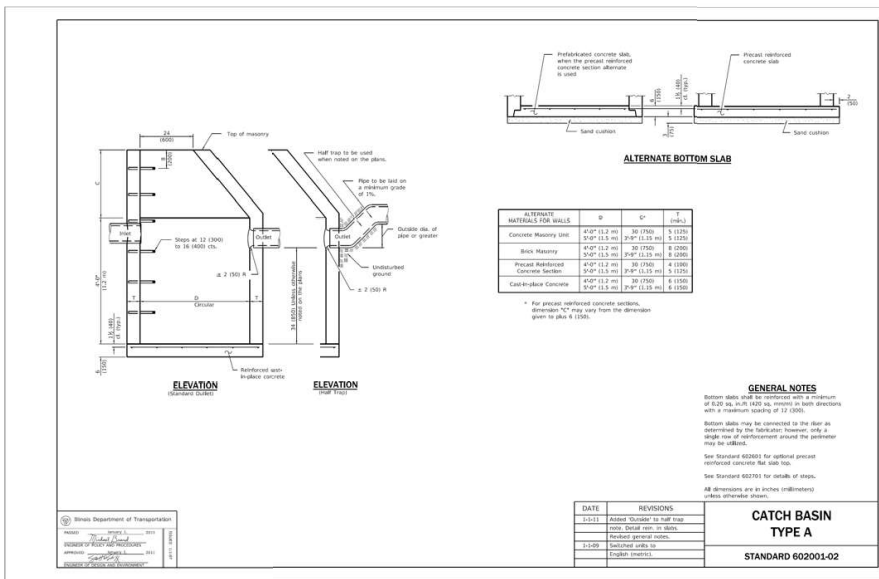
CONSTRUCTION DETAILS

SCALE: N.T.S.

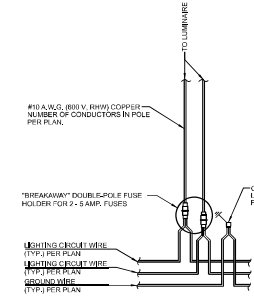
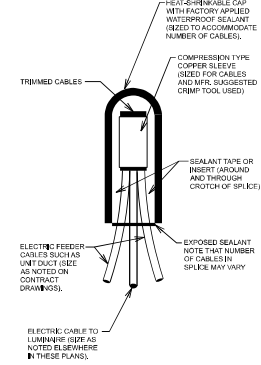
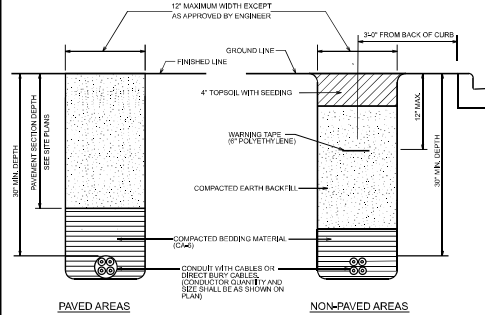
SHEET 2 OF 5 SHEETS STA. TO STA.

COUNTY	TOTAL SHEETS	SHEET NO.
DUPAGE	21	18

CONTRACT NO. 211380



1. THE LIGHT POLE LOCATIONS ON THIS PLAN SHOW THE RECOMMENDED PLACEMENT. ADJUSTMENTS TO THESE LOCATIONS MAY BE REQUIRED TO ACCOMMODATE SITE CONDITIONS AND SHALL BE APPROVED BY THE OWNER AND ENGINEER.
2. LOCATION OF LIGHTING CABLE SHOWN ON THE PLAN IS DIAGRAMMATIC ONLY. ALL CONDUIT SHALL BE A MINIMUM OF 30" BELOW GRADE AND LOCATED 5' FROM EDGE OF PAVEMENT.
3. THE ELECTRICAL CONTRACTOR SHALL BE RESPONSIBLE FOR FURNISHING ALL NECESSARY MATERIALS AND MAKING ALL FINAL CONNECTIONS OF THE LIGHTING SYSTEM.
4. ALL LIGHTING WORK SHALL CONFORM TO DUPAGE COUNTY AND CITY OF WHEATON REQUIREMENTS, THE LATEST EDITION OF IBC STANDARD SPECIFICATIONS BOOK, AND THE LATEST EDITION OF THE AASHTO STANDARD SPECIFICATIONS FOR STRUCTURAL SUPPORTS FOR HIGHWAY SIGNS, LIGHTS AND TRAFFIC SIGNALS.
5. PRIOR TO ANY EQUIPMENT ORDER, THE CONTRACTOR SHALL SUBMIT EQUIPMENT SPECIFICATIONS, CATALOG OUT SHEETS, AND DESIGN DATA FOR ALL MATERIAL PROPOSED FOR THE PROJECT TO THE ENGINEER AND OWNER FOR REVIEW & APPROVAL.
6. ALL ELECTRICAL WORK SHALL CONFORM TO THE LATEST EDITION OF THE NATIONAL ELECTRICAL CODE (N.E.C.) AND ANY APPLICABLE LOCAL CODES.
7. ALL EXCESS DIRT AND DEBRIS EXCAVATED FOR POLE FOUNDATIONS SHALL BE REMOVED BY THE CONTRACTOR.
8. THE COST OF THE CONDUIT SHALL INCLUDE ELBOWS, SWEEPS, CONNECTING HARDWARE, MOUNTING HARDWARE, COATING OF WALLS, TRENCHING AND BACKFILL AS INDICATED IN THE PLANS. THE COST OF THE CONDUIT SHALL ALSO INCLUDE THE COST OF RESTORING CUT PAVEMENT, SIDEWALKS, SOD, ETC. TO ITS ORIGINAL CONDITION. SOD SHALL BE REPLACED IN LIKE KIND OF THE ADJACENT SURROUNDINGS.
9. THE CONDUCTOR SIZES SHOWN ON THE PLANS ARE BASED ON A 120/240 VOLT SINGLE-PHASE SERVICE. THE CONTRACTOR SHALL BE RESPONSIBLE FOR VERIFYING SERVICE WITH THE VILLAGE. IF SERVICE IS DIFFERENT, THE CONTRACTOR SHALL PROVIDE ADEQUATE NUMBER AND SIZE CONDUCTORS AND CONDUITS.
10. THE CONTRACTOR SHALL BE RESPONSIBLE FOR THE ESTABLISHMENT OF FINISHED GRADE.
11. THE LIGHTING SYSTEM WILL BE MAINTAINED BY OWNER UPON FINAL ACCEPTANCE.



GENERAL ELECTRICAL NOTES

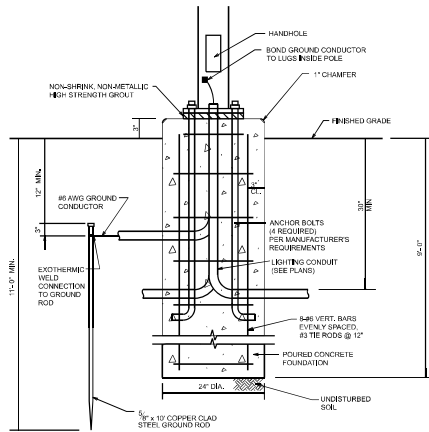
CONDUIT AND CABLE TRENCH BACKFILL AND LOCATION DETAIL

ELECTRICAL CABLES SPLICE DETAIL

LIGHT POLE WIRING DETAIL

LIGHT POLE FOUNDATION NOTES

1. CONTRACTOR TO VERIFY ALL ELEVATIONS, DIMENSIONS, LOCATIONS AND PRODUCTS PRIOR TO STARTING CONSTRUCTION AND/OR ORDERING MATERIALS.
2. CONCRETE TO BE CLASS A, MIN. STRENGTH TO BE 14-3500 PSI, WITH AIR CONTENT 6.5% ± 1.5% BY VOLUME.
3. ALL REINFORCEMENT STEEL TO BE ASTM A615, GR-60.
4. ALL FOOTINGS MUST BE POURED ON UNDISTURBED SOIL WITH A MINIMUM SAFE BEARING CAPACITY OF 2000 P.S.F. WITH NO ORGANICS. THE FOUNDATION SHALL NOT BE POURED ON FROZEN GROUND.
5. FOUNDATION DETAIL IS BASED ON MEDIUM CLAY (Q_u = 1.0 TO 150 FT.) SOIL CONDITIONS.
6. THE CONTRACTOR SHALL HAVE THE EXISTING SOIL CONDITIONS FIELD VERIFIED BY A QUALIFIED TESTING AGENCY AND SUBMIT DESIGN CALCULATIONS AND SHOP DRAWINGS IF EXISTING SOIL CONDITIONS ARE OUTSIDE THE PARAMETERS ASSUMED FOR THE TYPICAL FOUNDATION DESIGN.
7. ANCHOR BOLT SIZE, TYPE AND LOCATION SHALL BE TO MANUFACTURER'S SPECIFICATIONS.



LIGHT POLE FOUNDATION, 24" DIAMETER, SPECIAL



V3 Companies
7325 Arden Avenue
Woodridge, IL 60517
630.724.9200 PHONE
630.724.9202 FAX
www.v3cc.com

USER NAME = cjay
DESIGNED =
DRAWN =
PLOT SCALE =
PLOT DATE = 5/1/2023

DESIGNED =
DRAWN =
CHECKED = JNHM
DATE =

DESIGNED =
DRAWN =
CHECKED =
DATE =

DESIGNED =
DRAWN =
CHECKED =
DATE =

DESIGNED =
DRAWN =
CHECKED =
DATE =

DESIGNED =
DRAWN =
CHECKED =
DATE =

DESIGNED =
DRAWN =
CHECKED =
DATE =

DUPAGE COUNTY CAMPUS
STORMWATER POND IMPROVEMENTS
ENGINEERING PLANS

WINHELD / WHEATON

ILLINOIS

CONSTRUCTION DETAILS

SCALE: N.T.S.

SHEET

3

OF

5

SHEETS

STA.

TO STA.

CONTRACT NO. 211350

COUNTY TOTAL SHEET NO.
DUPAGE 21 19

